

ALKALINE PHOSPHATASE RABBIT MAB

Cat.#: N261819

Product Name: Anti-Alkaline Phosphatase Rabbit Monoclonal Antibody

Synonyms: ALPL; Alkaline phosphatase; tissue-nonspecific isozyme; AP-TNAP; TNSALP; Alkaline phosphatase liver/bone/kidney isozyme

UNIPROT ID: P05186

Background: There are at least four distinct but related alkaline phosphatases: intestinal, placental, placental-like, and liver/bone/kidney (tissue non-specific). The first three are located together on chromosome 2, while the tissue non-specific form is located on chromosome 1. The product of this gene is a membrane bound glycosylated enzyme that is not expressed in any particular tissue and is, therefore, referred to as the tissue-nonspecific form of the enzyme.

Immunogen: A synthetic peptide of human Alkaline Phosphatase, Tissue Non-Specific

Applications: WB,IHC-F,IHC-P,ICC/IF,IP

Recommended Dilutions: WB: 1/500-1/1000 IHC: 1/50-1/100 IF: 1/50-1/200 IP: 1/20

Host Species: Rabbit

Clonality: Rabbit Monoclonal

Clone ID: R08-6H0

MW: Calculated MW: 57 kDa; Observed MW: 75 kDa

Isotype: IgG

Purification: Affinity Purified

Species Reactivity: Human,Rat

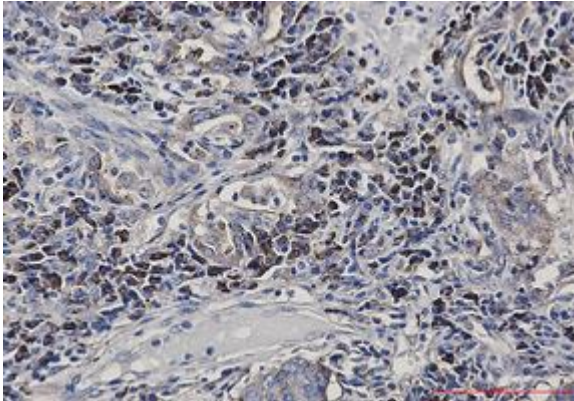
Conjugation: Unconjugated

Modification: Unmodified

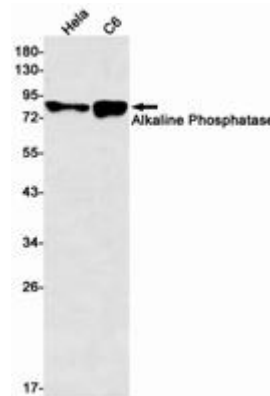
Constituents: PBS (without Mg²⁺ and Ca²⁺), pH 7.3 containing 50% glycerol, 0.5% BSA and 0.02% sodium azide

Research Areas: Cell Biology

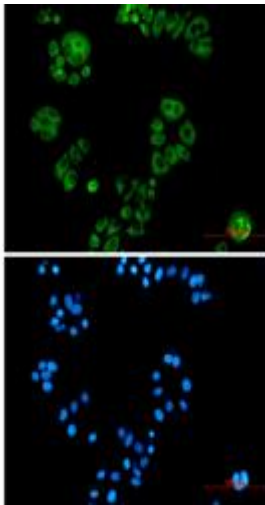
Storage & Shipping: Store at -20°C. Avoid repeated freezing and thawing



Immunohistochemistry analysis of paraffin-embedded Human lung cancer using Alkaline Phosphatase, NonSpecific antibody. High-pressure and temperature Sodium Citrate pH 6.0 was used for antigen retrieval.



Western blot analysis of Alkaline Phosphatase in HeLa, C6 lysates using Alkaline Phosphatase antibody.



Immunocytochemistry analysis of Alkaline Phosphatase, NonSpecific (green) in heLa using Alkaline Phosphatase, NonSpecific antibody, and DAPI (blue)