

ALDOA RABBIT PAB

Cat.#: S216321

Product Name: Anti-ALDOA Rabbit Polyclonal Antibody

Synonyms: ALDA; GSD12; HEL-S-87p

UNIPROT ID: P04075 (Gene Accession - BC004333)

Background: This gene encodes a member of the class I fructose-bisphosphate aldolase protein family. The encoded protein is a glycolytic enzyme that catalyzes the reversible conversion of fructose-1,6-bisphosphate to glyceraldehyde 3-phosphate and dihydroxyacetone phosphate. Three aldolase isozymes (A, B, and C), encoded by three different genes, are differentially expressed during development. Mutations in this gene have been associated with Glycogen Storage Disease XII, an autosomal recessive disorder associated with hemolytic anemia. Disruption of this gene also plays a role in the progression of multiple types of cancers. Related pseudogenes have been identified on chromosomes 3 and 10.

Immunogen: Fusion protein of human ALDOA

Applications: ELISA, WB, IHC

Recommended Dilutions: IHC: 50-200;WB: 1000-5000;ELISA: 5000-10000

Host Species: Rabbit

Clonality: Rabbit Polyclonal

Isotype: Immunogen-specific rabbit IgG

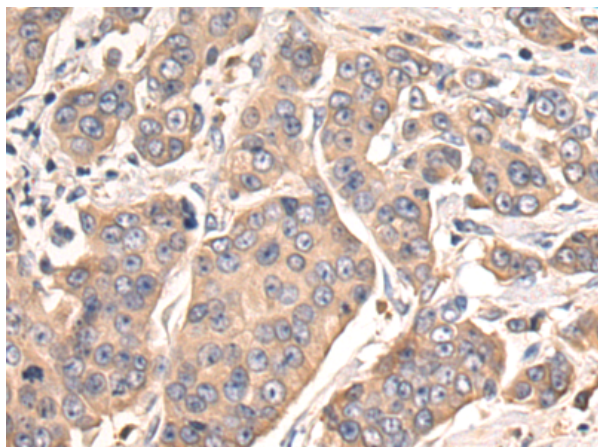
Purification: Antigen affinity purification

Species Reactivity: Human, Mouse, Rat

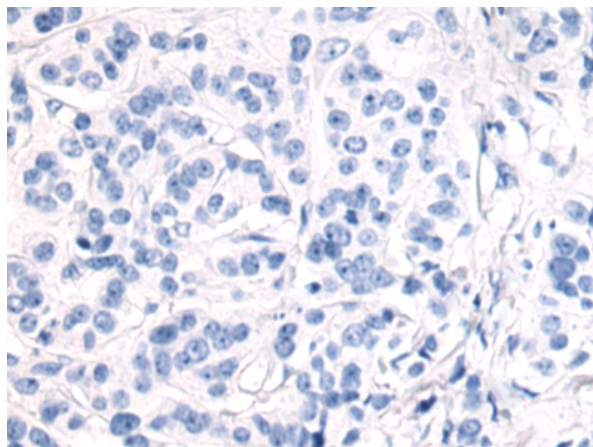
Constituents: PBS (without Mg²⁺ and Ca²⁺), pH 7.4, 150 mM NaCl, 0.05% Sodium Azide and 40% glycerol

Research Areas: Metabolism, Cancer

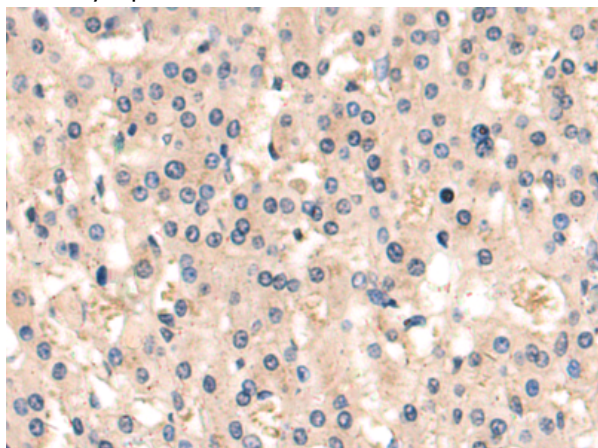
Storage & Shipping: Store at -20°C. Avoid repeated freezing and thawing



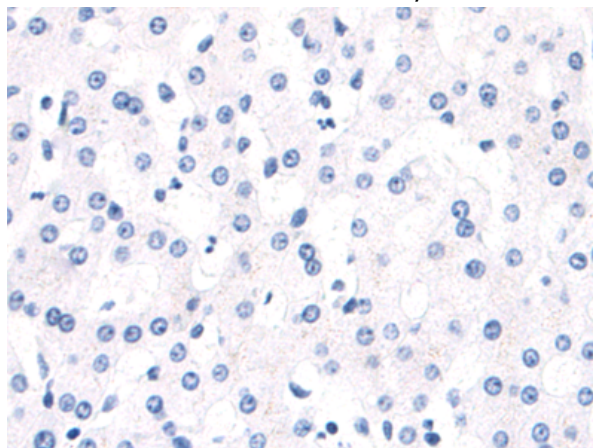
Immunohistochemistry analysis of paraffin embedded Human breast cancer tissue using 216321(ALDOA Antibody) at a dilution of 1/55(Cytoplasm).



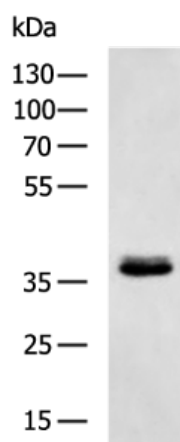
In comparison with the IHC on the left, the same paraffin-embedded Human breast cancer tissue is first treated with the fusion protein and then with 216321(Anti-ALDOA Antibody) at dilution 1/55.



The image on the left is immunohistochemistry of paraffin-embedded Human liver cancer tissue using 216321(Anti-ALDOA Antibody) at a dilution of 1/55.



In comparison with the IHC on the left, the same paraffin-embedded Human liver cancer tissue is first treated with fusion protein and then with D220203(Anti-ALDOA Antibody) at dilution 1/55.



Gel: 8%SDS-PAGE, Lysate:40 µg;
Lane: Mouse brain tissue lysates;
Primary antibody: 216321(ALDOA Antibody) at dilution 1/800;
Secondary antibody: HRP-conjugated Goat anti rabbit IgG at 1/5000 dilution;
Exposure time: 2 seconds



Product Description

Pioneering GTPase and Oncogene Product Development since 2010
