

## ALDH2 RABBIT MAB

**Cat.#:** N261814

**Product Name:** Anti-ALDH2 Rabbit Monoclonal Antibody

**Synonyms:** ALDH2; ALDM; Aldehyde dehydrogenase; mitochondrial; ALDH class 2; ALDH-E2; ALDH1

**UNIPROT ID:** P05091

**Background:** Alcohol metabolism; ethanol degradation; acetate from ethanol: step 2/2.

**Immunogen:** A synthetic peptide of human ALDH2

**Applications:** WB,IHC-P,IP

**Recommended Dilutions:** WB: 1/500-1/1000 IHC: 1/50-1/100 IP: 1/20

**Host Species:** Rabbit

**Clonality:** Rabbit Monoclonal

**Clone ID:** R08-9B4

**MW:** Calculated MW: 56 kDa; Observed MW: 56 kDa

**Isotype:** IgG

**Purification:** Affinity Purified

**Species Reactivity:** Human,Mouse

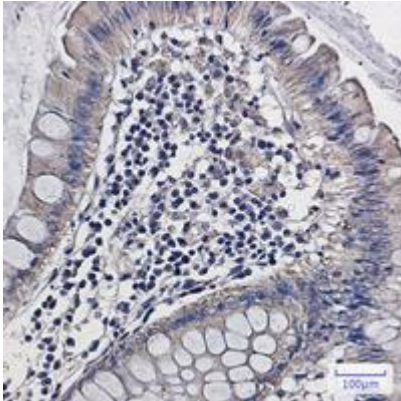
**Conjugation:** Unconjugated

**Modification:** Unmodified

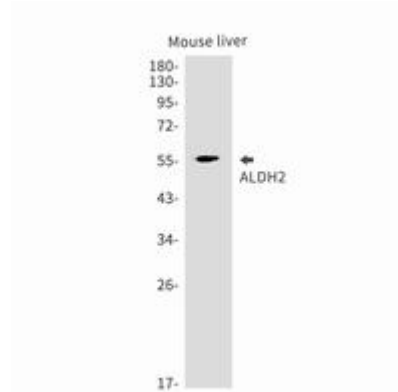
**Constituents:** PBS (without Mg<sup>2+</sup> and Ca<sup>2+</sup>), pH 7.3 containing 50% glycerol, 0.5% BSA and 0.02% sodium azide

**Research Areas:** Tags & Cell Markers

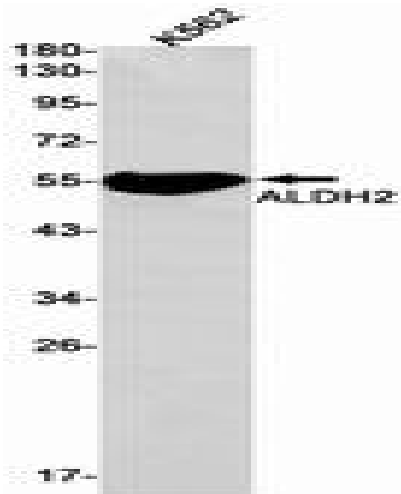
**Storage & Shipping:** Store at -20°C. Avoid repeated freezing and thawing



Immunohistochemistry analysis of paraffin-embedded Human colon cancer using ALDH2 antibody. High-pressure and temperature Sodium Citrate pH 6.0 was used for antigen retrieval.



Western blot analysis of ALDH2 in mouse liver lysates using ALDH2 antibody.



Western blot analysis of ALDH2 in K562 lysates using ALDH2 antibody.