

## ALDH1A1/ALDH1A2/ALDH1A3 RABBIT PAB

**Cat.#:** S216241

**Product Name:** Anti-ALDH1A1/ALDH1A2/ALDH1A3 Rabbit Polyclonal Antibody

**Synonyms:** ALDC, ALDH1, PUMB1, ALDH11, RALDH1, ALDH-E1; RALDH2, RALDH2-T, RALDH(II); ALDH6, RALDH3, ALDH1A6

**UNIPROT ID:** P00352/O94788/P47895 (Gene Accession - BC001505/BC030589/BC069274 )

**Background:** This protein belongs to the aldehyde dehydrogenase family of proteins. The product of this gene is an enzyme that catalyzes the synthesis of retinoic acid (RA) from retinaldehyde. Retinoic acid, the active derivative of vitamin A (retinol), is a hormonal signaling molecule that functions in developing and adult tissues. The studies of a similar mouse gene suggest that this enzyme and the cytochrome CYP26A1, concurrently establish local embryonic retinoic acid levels which facilitate posterior organ development and prevent spina bifida. Four transcript variants encoding distinct isoforms have been identified for this gene.

**Immunogen:** Fusion protein of human ALDH1A1/ALDH1A2/ALDH1A3

**Applications:** ELISA, WB, IHC

**Recommended Dilutions:** IHC: 50-150;WB: 500-2000;ELISA: 1000-5000

**Host Species:** Rabbit

**Clonality:** Rabbit Polyclonal

**Isotype:** Immunogen-specific rabbit IgG

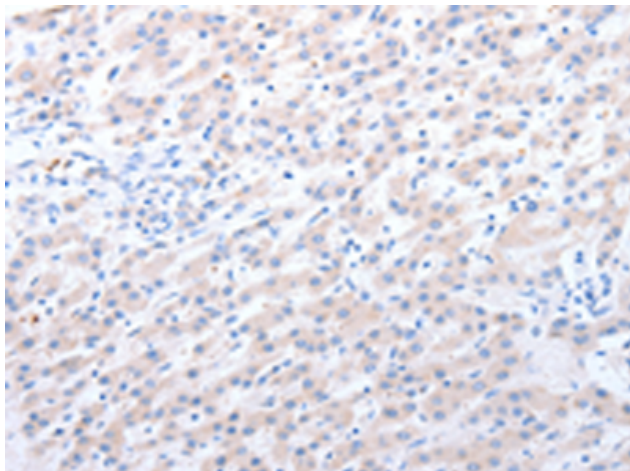
**Purification:** Antigen affinity purification

**Species Reactivity:** Human, Mouse

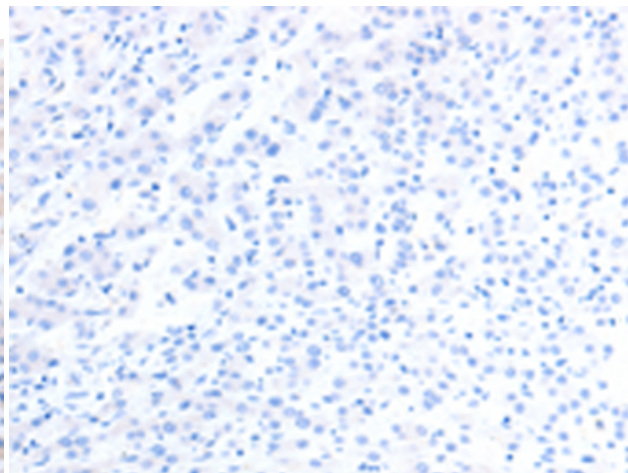
**Constituents:** PBS (without Mg<sup>2+</sup> and Ca<sup>2+</sup>), pH 7.4, 150 mM NaCl, 0.05% Sodium Azide and 40% glycerol

**Research Areas:** Cancer, Neuroscience, Stem Cells

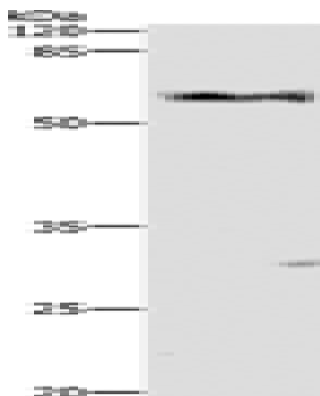
**Storage & Shipping:** Store at -20°C. Avoid repeated freezing and thawing



Immunohistochemistry analysis of paraffin embedded Human liver cancer tissue using 216241(ALDH1A1/ALDH1A2/ALDH1A3 Antibody) at a dilution of 1/40(Cytoplasm).



In comparison with the IHC on the left, the same paraffin-embedded Human liver cancer tissue is first treated with the fusion protein and then with 216241(Anti-ALDH1A1/ALDH1A2/ALDH1A3 Antibody) at dilution 1/40.



Gel: 10%SDS-PAGE, Lysate: 30 µg;  
 Lane: Mouse liver tissue;  
 Primary antibody:  
 216241(ALDH1A1/ALDH1A2/ALDH1A3 Antibody) at dilution 1/400;  
 Secondary antibody: Goat anti rabbit IgG at 1/8000 dilution;  
 Exposure time: 30 seconds