

AKT2 RABBIT PAB

Cat.#: S220276

Product Name: Anti-AKT2 Rabbit Polyclonal Antibody

Synonyms: PKBB; PRKBB; HIHGHH; PKBBETA; RAC-BETA

UNIPROT ID: P31751 (Gene Accession - NP_001617)

Background: This gene is a putative oncogene encoding a protein belonging to a subfamily of serine/threonine kinases containing SH2-like (Src homology 2-like) domains. The gene was shown to be amplified and overexpressed in 2 of 8 ovarian carcinoma cell lines and 2 of 15 primary ovarian tumors. Overexpression contributes to the malignant phenotype of a subset of human ductal pancreatic cancers. The encoded protein is a general protein kinase capable of phosphorylating several known proteins.

Immunogen: Synthetic peptide of human AKT2

Applications: ELISA, IHC

Recommended Dilutions: IHC: 50-200; ELISA: 2000-10000

Host Species: Rabbit

Clonality: Rabbit Polyclonal

Isotype: Immunogen-specific rabbit IgG

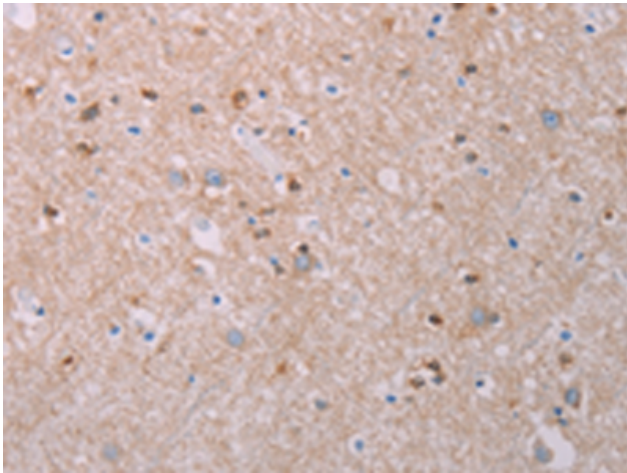
Purification: Antigen affinity purification

Species Reactivity: Human, Mouse, Rat

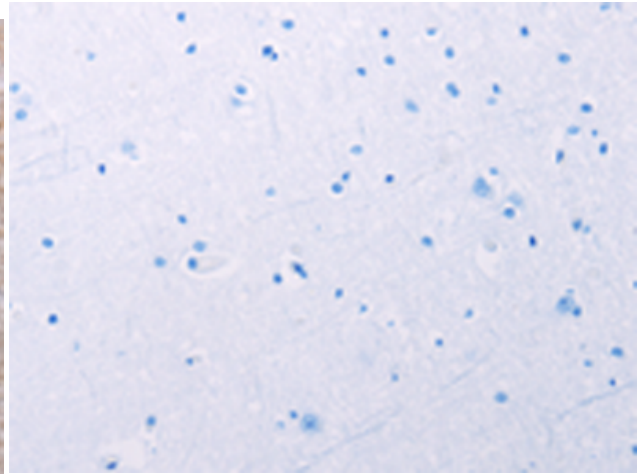
Constituents: PBS (without Mg²⁺ and Ca²⁺), pH 7.4, 150 mM NaCl, 0.05% Sodium Azide and 40% glycerol

Research Areas: Signal Transduction, Neuroscience

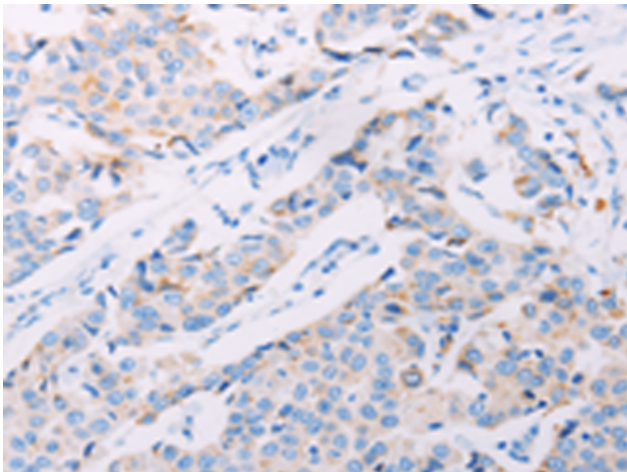
Storage & Shipping: Store at -20°C. Avoid repeated freezing and thawing



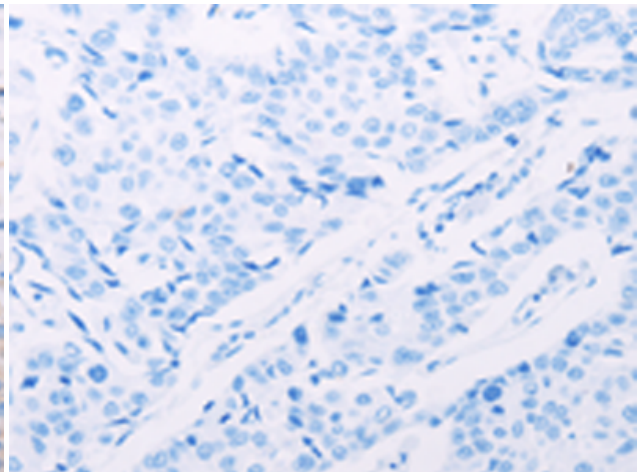
Immunohistochemistry analysis of paraffin embedded Human brain tissue using 220276 (AKT2 Antibody) at a dilution of 1/70 (Cytoplasm).



In comparison with the IHC on the left, the same paraffin-embedded Human brain tissue is first treated with the synthetic peptide and then with 220276 (Anti-AKT2 Antibody) at dilution 1/70.



The image on the left is immunohistochemistry of paraffin-embedded Human breast cancer tissue using 220276 (Anti-AKT2 Antibody) at a dilution of 1/70.



In comparison with the IHC on the left, the same paraffin-embedded Human breast cancer tissue is first treated with synthetic peptide and then with D261251 (Anti-AKT2 Antibody) at dilution 1/70.