

## AKR1D1 RABBIT PAB

**Cat.#:** S216967

**Product Name:** Anti-AKR1D1 Rabbit Polyclonal Antibody

**Synonyms:** CBAS2; SRD5B1; 3o5bred

**UNIPROT ID:** P51857 (Gene Accession - BC130625 )

**Background:** The enzyme encoded by this gene is responsible for the catalysis of the 5-beta-reduction of bile acid intermediates and steroid hormones carrying a delta(4)-3-one structure. Deficiency of this enzyme may contribute to hepatic dysfunction. Three transcript variants encoding different isoforms have been found for this gene. Other variants may be present, but their full-length natures have not been determined yet.

**Immunogen:** Fusion protein of human AKR1D1

**Applications:** ELISA, WB, IHC

**Recommended Dilutions:** IHC: 25-100;WB: 500-2000;ELISA: 2000-5000

**Host Species:** Rabbit

**Clonality:** Rabbit Polyclonal

**Isotype:** Immunogen-specific rabbit IgG

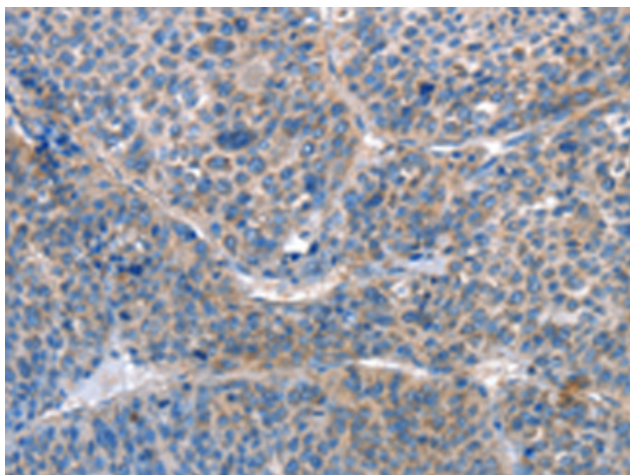
**Purification:** Antigen affinity purification

**Species Reactivity:** Human, Mouse, Rat

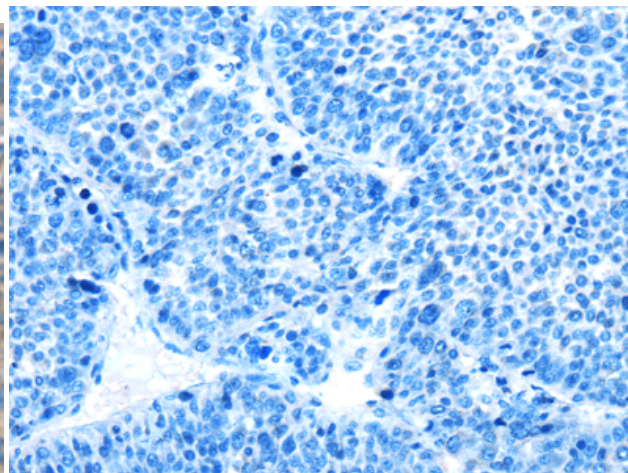
**Constituents:** PBS (without Mg<sup>2+</sup> and Ca<sup>2+</sup>), pH 7.4, 150 mM NaCl, 0.05% Sodium Azide and 40% glycerol

**Research Areas:** Metabolism, Cancer, Cardiovascular

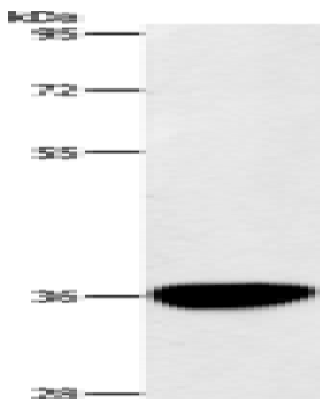
**Storage & Shipping:** Store at -20°C. Avoid repeated freezing and thawing



Immunohistochemistry analysis of paraffin embedded Human liver cancer tissue using 216967 (AKR1D1 Antibody) at a dilution of 1/25 (Cytoplasm).



In comparison with the IHC on the left, the same paraffin-embedded Human liver cancer tissue is first treated with the fusion protein and then with 216967 (Anti-AKR1D1 Antibody) at dilution 1/25.



Gel: 8% SDS-PAGE, Lysate: 40  $\mu$ g;  
Lane 1-2: Mouse liver tissue, A549 cell lysates;  
Primary antibody: 216967 (AKR1D1 Antibody) at dilution 1/500;  
Secondary antibody: HRP-conjugated Goat anti rabbit IgG at 1/5000 dilution;  
Exposure time: 5 minutes