

## AKR1A1 RABBIT PAB

**Cat.#:** S220043

**Product Name:** Anti-AKR1A1 Rabbit Polyclonal Antibody

**Synonyms:** ALR; ARM; DD3; ALDR1

**UNIPROT ID:** P14550 (Gene Accession - NP\_001189342 )

**Background:** This gene encodes a member of the aldo/keto reductase superfamily, which consists of more than 40 known enzymes and proteins. This member, also known as aldehyde reductase, is involved in the reduction of biogenic and xenobiotic aldehydes and is present in virtually every tissue. Multiple alternatively spliced transcript variants of this gene exist, all encoding the same protein.

**Immunogen:** Synthetic peptide of human AKR1A1

**Applications:** ELISA, WB, IHC

**Recommended Dilutions:** IHC: 50-200;WB: 500-2000;ELISA: 2000-5000

**Host Species:** Rabbit

**Clonality:** Rabbit Polyclonal

**Isotype:** Immunogen-specific rabbit IgG

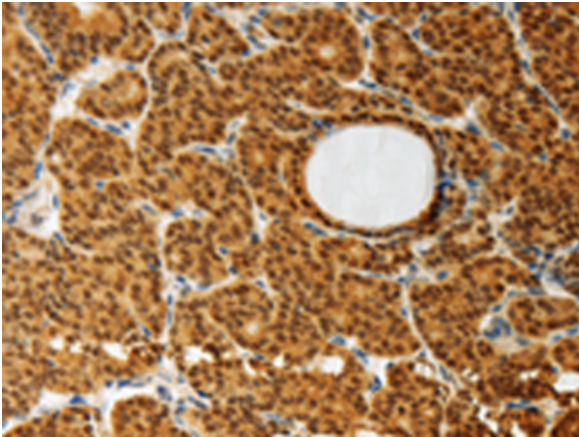
**Purification:** Antigen affinity purification

**Species Reactivity:** Human, Mouse, Rat

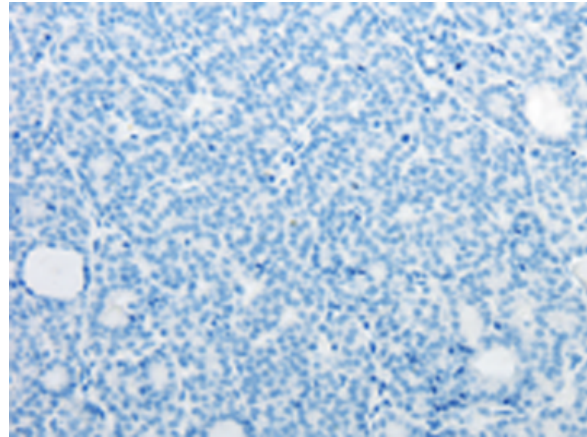
**Constituents:** PBS (without Mg<sup>2+</sup> and Ca<sup>2+</sup>), pH 7.4, 150 mM NaCl, 0.05% Sodium Azide and 40% glycerol

**Research Areas:** Metabolism, Cell Biology

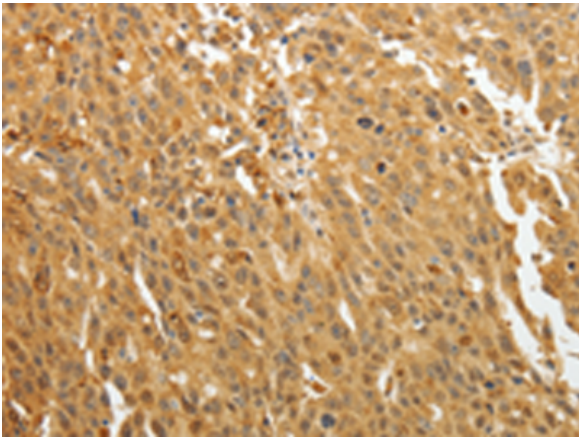
**Storage & Shipping:** Store at -20°C. Avoid repeated freezing and thawing



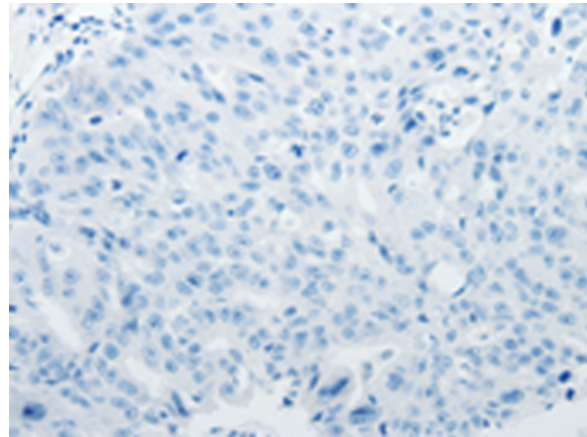
Immunohistochemistry analysis of paraffin embedded Human thyroid cancer tissue using 220043(AKR1A1 Antibody) at a dilution of 1/30(Cytoplasm, Nucleus).



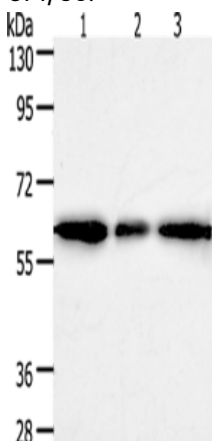
In comparison with the IHC on the left, the same paraffin-embedded Human thyroid cancer tissue is first treated with the synthetic peptide and then with 220043(Anti-AKR1A1 Antibody) at dilution 1/30.



The image on the left is immunohistochemistry of paraffin-embedded Human ovarian cancer tissue using 220043(Anti-AKR1A1 Antibody) at a dilution of 1/30.



In comparison with the IHC on the left, the same paraffin-embedded Human ovarian cancer tissue is first treated with synthetic peptide and then with D260848(Anti-AKR1A1 Antibody) at dilution 1/30.



Gel: 10%SDS-PAGE, Lysate: 27 µg;  
Lane 1-3: Human liver cancer tissue, hela cells, 293T cells;  
Primary antibody: 220043(AKR1A1 Antibody) at dilution 1/500;  
Secondary antibody: Goat anti rabbit IgG at 1/8000 dilution;  
Exposure time: 10 seconds



# Product Description

Pioneering GTPase and Oncogene Product Development since 2010

---