

## AKAP8L RABBIT PAB

**Cat.#:** S216964

**Product Name:** Anti-AKAP8L Rabbit Polyclonal Antibody

**Synonyms:** HA95; HAP95; NAKAP; NAKAP95

**UNIPROT ID:** Q9ULX6 (Gene Accession - BC000713 )

**Background:** A-kinase anchor protein 8-like is an enzyme that in humans is encoded by the AKAP8L gene. Could play a role in constitutive transport element (CTE)-mediated gene expression. Does not seem to be implicated in the binding of regulatory subunit II of PKA. May be involved in nuclear envelope breakdown and chromatin condensation. May regulate the initiation phase of DNA replication when associated with TMPO-beta.

**Immunogen:** Fusion protein of human AKAP8L

**Applications:** ELISA, WB, IHC

**Recommended Dilutions:** IHC: 25-100;WB: 200-1000;ELISA: 2000-5000

**Host Species:** Rabbit

**Clonality:** Rabbit Polyclonal

**Isotype:** Immunogen-specific rabbit IgG

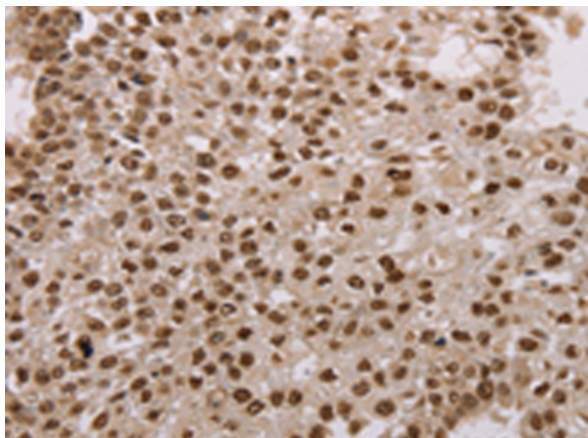
**Purification:** Antigen affinity purification

**Species Reactivity:** Human, Mouse

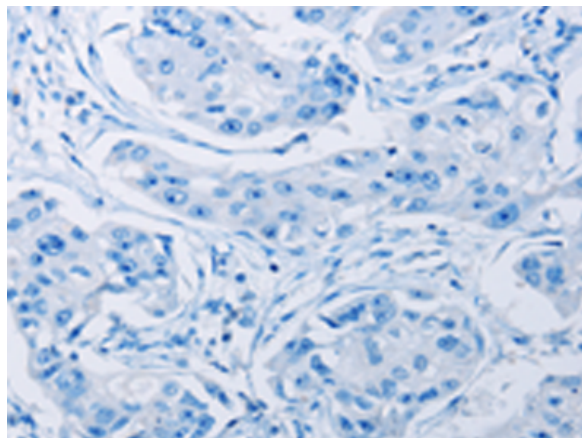
**Constituents:** PBS (without Mg<sup>2+</sup> and Ca<sup>2+</sup>), pH 7.4, 150 mM NaCl, 0.05% Sodium Azide and 40% glycerol

**Research Areas:** Epigenetics and Nuclear Signaling

**Storage & Shipping:** Store at -20°C. Avoid repeated freezing and thawing



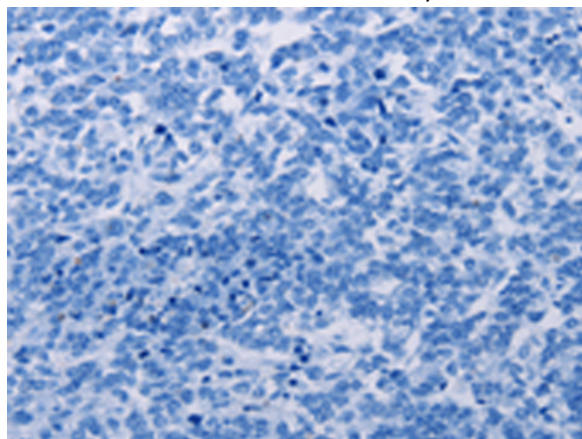
Immunohistochemistry analysis of paraffin embedded Human breast cancer tissue using 216964(AKAP8L Antibody) at a dilution of 1/15(Nucleus).



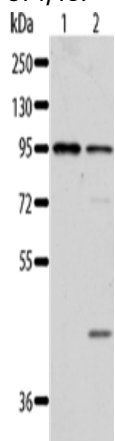
In comparison with the IHC on the left, the same paraffin-embedded Human breast cancer tissue is first treated with the fusion protein and then with 216964(Anti-AKAP8L Antibody) at dilution 1/15.



The image on the left is immunohistochemistry of paraffin-embedded Human ovarian cancer tissue using 216964(Anti-AKAP8L Antibody) at a dilution of 1/15.



In comparison with the IHC on the left, the same paraffin-embedded Human ovarian cancer tissue is first treated with fusion protein and then with D221552(Anti-AKAP8L Antibody) at dilution 1/15.



Gel: 8%SDS-PAGE, Lysate: 40 µg;  
 Lane 1-2: Jurkat cells, 293T cells;  
 Primary antibody: 216964(AKAP8L Antibody) at dilution 1/84;  
 Secondary antibody: Goat anti rabbit IgG at 1/8000 dilution;  
 Exposure time: 20 seconds



# Product Description

Pioneering GTPase and Oncogene Product Development since 2010

---