

AKAP8 RABBIT PAB

Cat.#: S219945

Product Name: Anti-AKAP8 Rabbit Polyclonal Antibody

Synonyms: AKAP-8, AKAP95, AKAP 95, AKAP-95

UNIPROT ID: O43823 (Gene Accession - NP_005849)

Background: This gene encodes a member of the A-kinase anchor protein family. A-kinase anchor proteins are scaffold proteins that contain a binding domain for the RI/RII subunit of protein kinase A (PKA) and recruit PKA and other signaling molecules to specific subcellular locations. This gene encodes a nuclear A-kinase anchor protein that binds to the RII alpha subunit of PKA and may play a role in chromosome condensation during mitosis by targeting PKA and the condensin complex to chromatin. A pseudogene of this gene is located on the short arm of chromosome 9.

Immunogen: Synthetic peptide of human AKAP8

Applications: ELISA, WB, IHC

Recommended Dilutions: IHC: 25-100;WB: 500-2000;ELISA: 2000-5000

Host Species: Rabbit

Clonality: Rabbit Polyclonal

Isotype: Immunogen-specific rabbit IgG

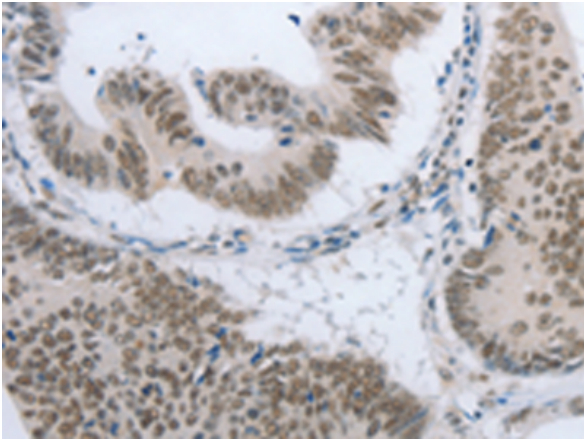
Purification: Antigen affinity purification

Species Reactivity: Human

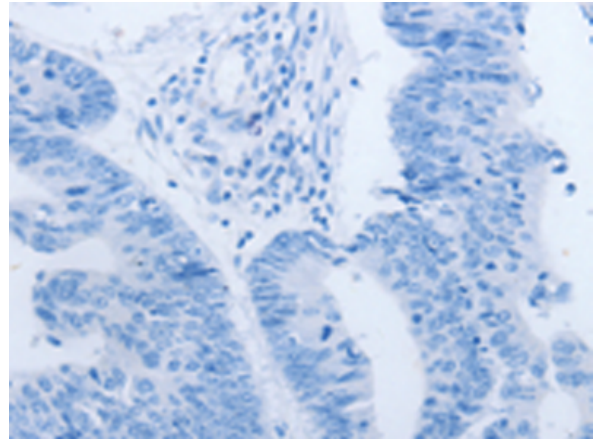
Constituents: PBS (without Mg²⁺ and Ca²⁺), pH 7.4, 150 mM NaCl, 0.05% Sodium Azide and 40% glycerol

Research Areas: Cancer

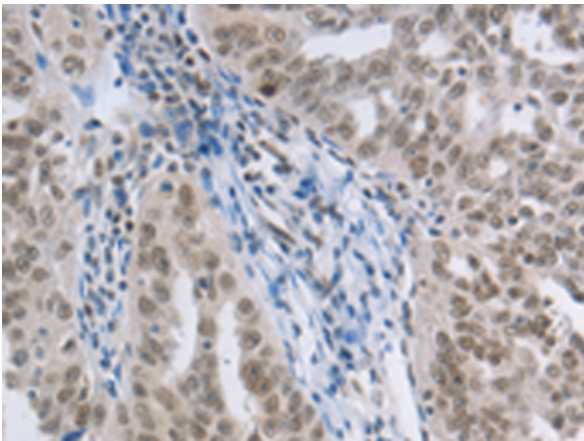
Storage & Shipping: Store at -20°C. Avoid repeated freezing and thawing



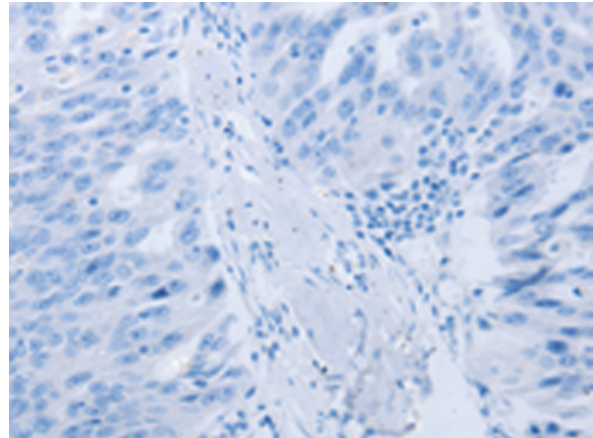
Immunohistochemistry analysis of paraffin embedded Human colon cancer tissue using 219945(AKAP8 Antibody) at a dilution of 1/15(cytoplasm, Nucleus).



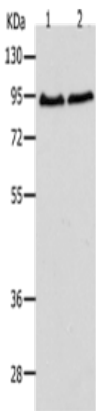
In comparison with the IHC on the left, the same paraffin-embedded Human colon cancer tissue is first treated with the synthetic peptide and then with 219945(Anti-AKAP8 Antibody) at dilution 1/15.



The image on the left is immunohistochemistry of paraffin-embedded Human ovarian cancer tissue using 219945(Anti-AKAP8 Antibody) at a dilution of 1/15.



In comparison with the IHC on the left, the same paraffin-embedded Human ovarian cancer tissue is first treated with synthetic peptide and then with D260664(Anti-AKAP8 Antibody) at dilution 1/15.



Gel: 10%SDS-PAGE, Lysate: 40 µg;
Lane 1-2: Hela cells, 293T cells;
Primary antibody: 219945(AKAP8 Antibody) at dilution 1/250;
Secondary antibody: Goat anti rabbit IgG at 1/8000 dilution;
Exposure time: 2 minutes



Product Description

Pioneering GTPase and Oncogene Product Development since 2010
