

AIFM2 RABBIT PAB

Cat.#: S214062

Product Name: Anti-AIFM2 Rabbit Polyclonal Antibody

Synonyms: AMID; PRG3

UNIPROT ID: Q9BRQ8 (Gene Accession - NP_001185625)

Background: This gene encodes a flavoprotein oxidoreductase that binds single stranded DNA and is thought to contribute to apoptosis in the presence of bacterial and viral DNA. The expression of this gene is also found to be induced by tumor suppressor protein p53 in colon cancer cells.

Immunogen: Synthetic peptide of human AIFM2

Applications: ELISA, IHC

Recommended Dilutions: IHC: 20-100; ELISA: 5000-10000

Host Species: Rabbit

Clonality: Rabbit Polyclonal

Isotype: Immunogen-specific rabbit IgG

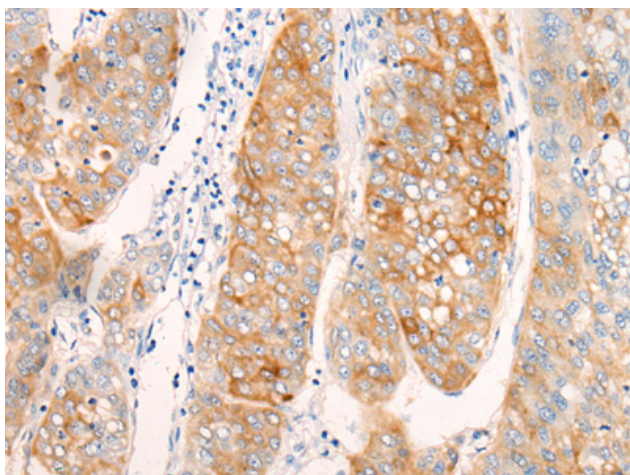
Purification: Antigen affinity purification

Species Reactivity: Human, Mouse

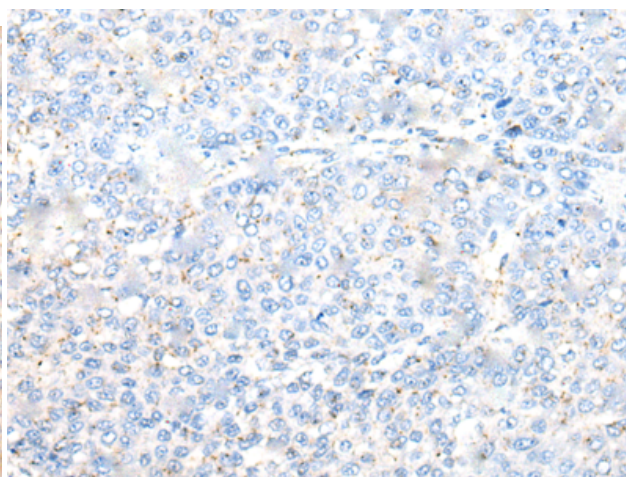
Constituents: PBS (without Mg²⁺ and Ca²⁺), pH 7.4, 150 mM NaCl, 0.05% Sodium Azide and 40% glycerol

Research Areas: Cancer

Storage & Shipping: Store at -20°C. Avoid repeated freezing and thawing



Immunohistochemistry analysis of paraffin embedded Human liver cancer tissue using 214062(AIFM2 Antibody) at a dilution of 1/30(Cytoplasm and Cell membrane).



In comparison with the IHC on the left, the same paraffin-embedded Human liver cancer tissue is first treated with the synthetic peptide and then with 214062(Anti-AIFM2 Antibody) at dilution 1/30.