

AHCTF1 RABBIT PAB

Cat.#: S221946

Product Name: Anti-AHCTF1 Rabbit Polyclonal Antibody

Synonyms: ELYS; MST108; TMBS62; MSTP108

UNIPROT ID: Q8WYP5 (Gene Accession - NP_056261)

Background: Predicted to enable DNA binding activity. Involved in nuclear pore complex assembly and regulation of cytokinesis. Located in nuclear membrane. Colocalizes with chromatin; kinetochore; and nuclear pore outer ring.

Immunogen: Synthetic peptide of human AHCTF1

Applications: ELISA, IHC

Recommended Dilutions: IHC: 50-200; ELISA: 5000-10000

Host Species: Rabbit

Clonality: Rabbit Polyclonal

Isotype: Immunogen-specific rabbit IgG

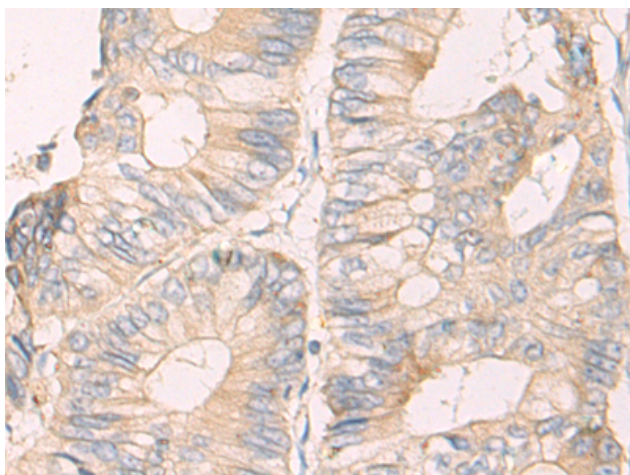
Purification: Antigen affinity purification

Species Reactivity: Human, Mouse

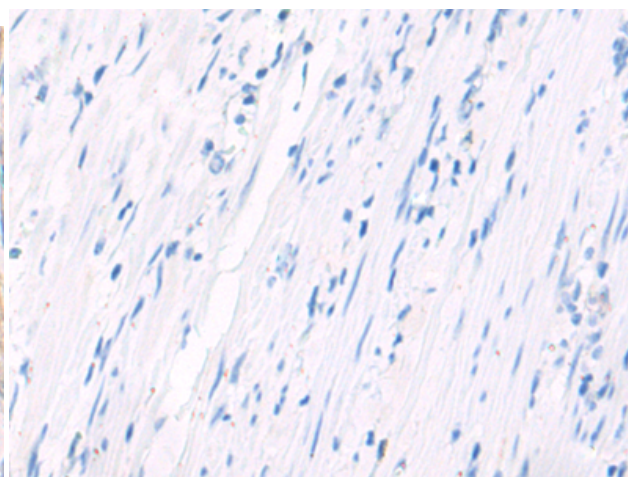
Constituents: PBS (without Mg²⁺ and Ca²⁺), pH 7.4, 150 mM NaCl, 0.05% Sodium Azide and 40% glycerol

Research Areas: Epigenetics and Nuclear Signaling, Cardiovascular, Stem Cells

Storage & Shipping: Store at -20°C. Avoid repeated freezing and thawing



Immunohistochemistry analysis of paraffin embedded Human colorectal cancer tissue using 221946(AHCTF1 Antibody) at a dilution of 1/50(Cytoplasm and Cell membrane).



In comparison with the IHC on the left, the same paraffin-embedded Human colorectal cancer tissue is first treated with the synthetic peptide and then with 221946(Anti-AHCTF1 Antibody) at dilution 1/50.