

AGR3 RABBIT PAB

Cat.#: S216961

Product Name: Anti-AGR3 Rabbit Polyclonal Antibody

Synonyms: AG3; AG-3; HAG3; hAG-3; BCMP11; PDIA18

UNIPROT ID: Q8TD06 (Gene Accession - BC058284)

Background: This gene encodes a member of the disulfide isomerase (PDI) family of endoplasmic reticulum (ER) proteins that catalyze protein folding and thiol-disulfide interchange reactions. The encoded protein has an N-terminal ER-signal sequence, a catalytically active thioredoxin domain, and a C-terminal ER-retention sequence. This gene is expressed in ciliated airway epithelial cells and, in mouse, plays a role in ciliary beat frequency in multiciliated cells. This gene is also over-expressed in breast, ovarian, and prostate cancers. [provided by RefSeq, Dec 2016]

Immunogen: Fusion protein of human AGR3

Applications: ELISA, WB, IHC

Recommended Dilutions: IHC: 50-200;WB: 500-2000;ELISA: 5000-10000

Host Species: Rabbit

Clonality: Rabbit Polyclonal

Isotype: Immunogen-specific rabbit IgG

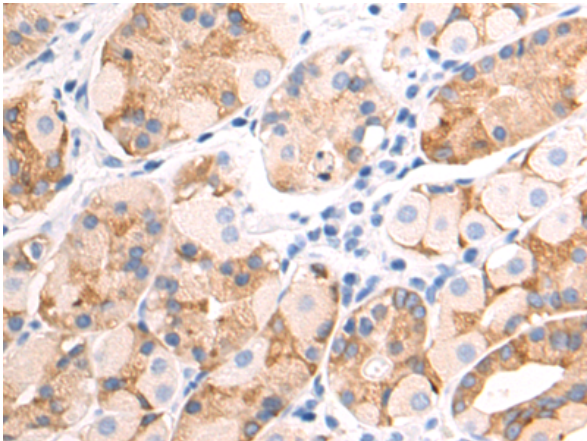
Purification: Antigen affinity purification

Species Reactivity: Human, Mouse

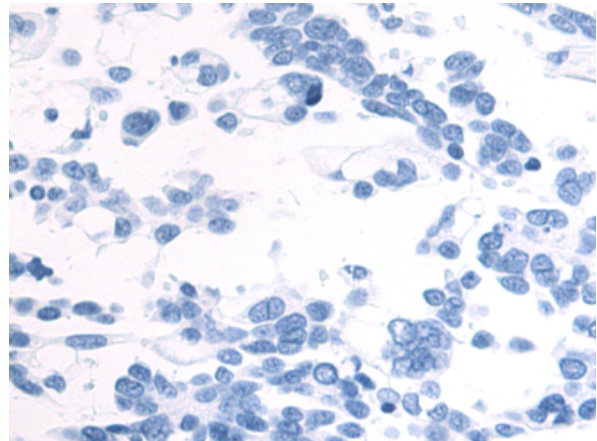
Constituents: PBS (without Mg²⁺ and Ca²⁺), pH 7.4, 150 mM NaCl, 0.05% Sodium Azide and 40% glycerol

Research Areas: Signal Transduction, Cancer

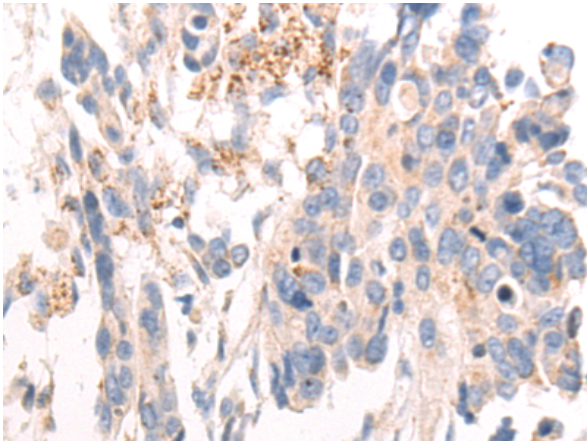
Storage & Shipping: Store at -20°C. Avoid repeated freezing and thawing



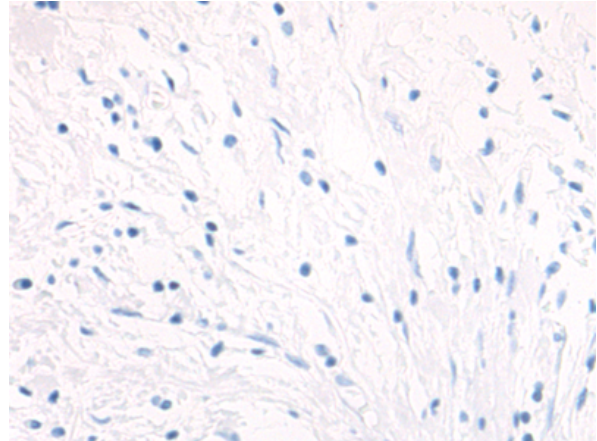
Immunohistochemistry analysis of paraffin embedded Human gastric cancer tissue using 216961(AGR3 Antibody) at a dilution of 1/50(Cytoplasm).



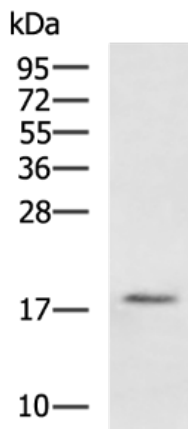
In comparison with the IHC on the left, the same paraffin-embedded Human gastric cancer tissue is first treated with the fusion protein and then with 216961(Anti-AGR3 Antibody) at dilution 1/50.



The image on the left is immunohistochemistry of paraffin-embedded Human colorectal cancer tissue using 216961(Anti-AGR3 Antibody) at a dilution of 1/50.



In comparison with the IHC on the left, the same paraffin-embedded Human colorectal cancer tissue is first treated with fusion protein and then with D221546(Anti-AGR3 Antibody) at dilution 1/50.



Gel: 12%SDS-PAGE, Lysate: 40 µg;
Lane: HT-29 cell lysate;
Primary antibody: 216961(AGR3 Antibody) at dilution 1/700;
Secondary antibody: HRP-conjugated Goat anti rabbit IgG at 1/5000 dilution;
Exposure time: 2 minutes



Product Description

Pioneering GTPase and Oncogene Product Development since 2010
