

AGFG1 RABBIT PAB

Cat.#: S216959

Product Name: Anti-AGFG1 Rabbit Polyclonal Antibody

Synonyms: HRB; RAB; RIP

UNIPROT ID: P52594 (Gene Accession - BC096273)

Background: The protein encoded by this gene is related to nucleoporins, a class of proteins that mediate nucleocytoplasmic transport. The encoded protein binds the activation domain of the human immunodeficiency virus Rev protein when Rev is assembled onto its RNA target, and is required for the nuclear export of Rev-directed RNAs. Multiple transcript variants encoding different isoforms have been found for this gene.

Immunogen: Fusion protein of human AGFG1

Applications: ELISA, WB, IHC

Recommended Dilutions: IHC: 50-200;WB: 500-2000;ELISA: 2000-5000

Host Species: Rabbit

Clonality: Rabbit Polyclonal

Isotype: Immunogen-specific rabbit IgG

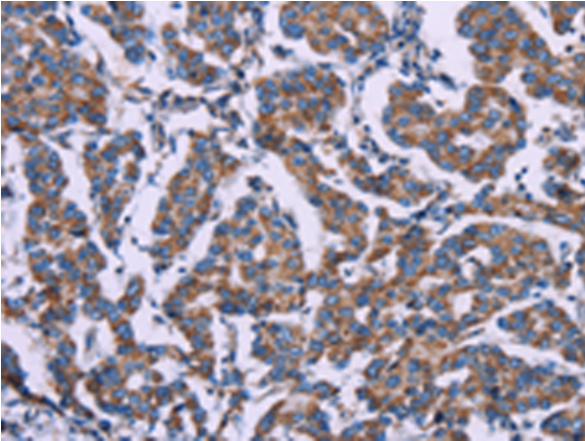
Purification: Antigen affinity purification

Species Reactivity: Human, Mouse, Rat

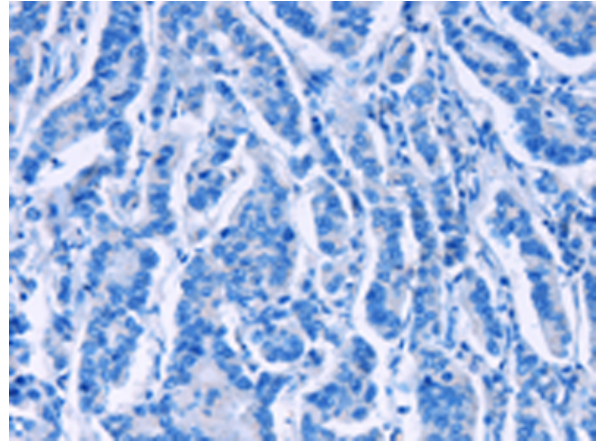
Constituents: PBS (without Mg²⁺ and Ca²⁺), pH 7.4, 150 mM NaCl, 0.05% Sodium Azide and 40% glycerol

Research Areas: Signal Transduction, Immunology

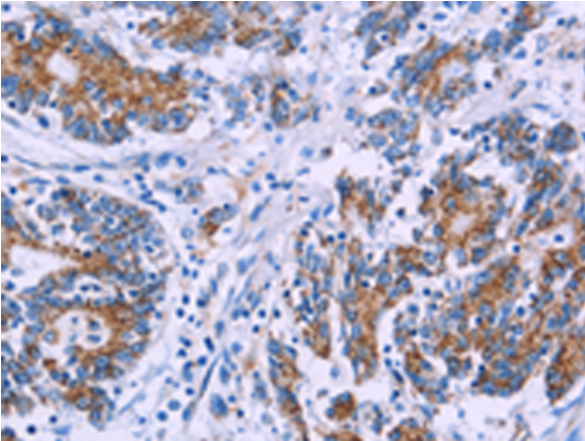
Storage & Shipping: Store at -20°C. Avoid repeated freezing and thawing



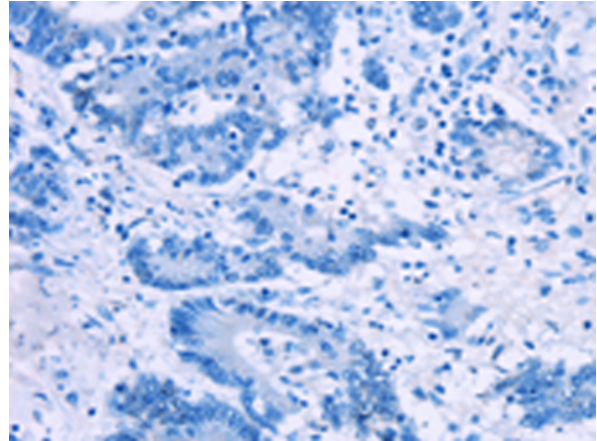
Immunohistochemistry analysis of paraffin embedded Human breast cancer tissue using 216959(AGFG1 Antibody) at a dilution of 1/50(Cytoplasm).



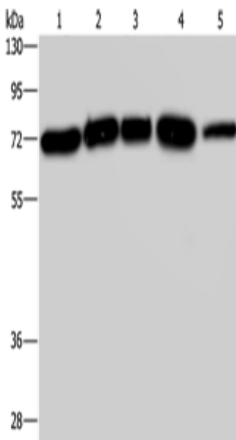
In comparison with the IHC on the left, the same paraffin-embedded Human breast cancer tissue is first treated with the fusion protein and then with 216959(Anti-AGFG1 Antibody) at dilution 1/50.



The image on the left is immunohistochemistry of paraffin-embedded Human colon cancer tissue using 216959(Anti-AGFG1 Antibody) at a dilution of 1/50.



In comparison with the IHC on the left, the same paraffin-embedded Human colon cancer tissue is first treated with fusion protein and then with D221538(Anti-AGFG1 Antibody) at dilution 1/50.



Gel: 8%SDS-PAGE, Lysate: 40 µg;
 Lane 1-5: A172 cells, Hela cells, 293T cells, K562 cells, human testis tissue;
 Primary antibody: 216959(AGFG1 Antibody) at dilution 1/533;
 Secondary antibody: Goat anti rabbit IgG at 1/8000 dilution;
 Exposure time: 40 seconds



Product Description

Pioneering GTPase and Oncogene Product Development since 2010
