

## AGER RABBIT PAB

**Cat.#:** S216226

**Product Name:** Anti-AGER Rabbit Polyclonal Antibody

**Synonyms:** RAGE

**UNIPROT ID:** Q15109 (Gene Accession - BC020669 )

**Background:** The advanced glycosylation end product (AGE) receptor encoded by this gene is a member of the immunoglobulin superfamily of cell surface receptors. It is a multiligand receptor, and besides AGE, interacts with other molecules implicated in homeostasis, development, and inflammation, and certain diseases, such as diabetes and Alzheimer's disease. Many alternatively spliced transcript variants encoding different isoforms, as well as non-protein-coding variants, have been described for this gene.

**Immunogen:** Fusion protein of human AGER

**Applications:** ELISA, WB, IHC

**Recommended Dilutions:** IHC: 100-300;WB: 500-2000;ELISA: 2000-5000

**Host Species:** Rabbit

**Clonality:** Rabbit Polyclonal

**Isotype:** Immunogen-specific rabbit IgG

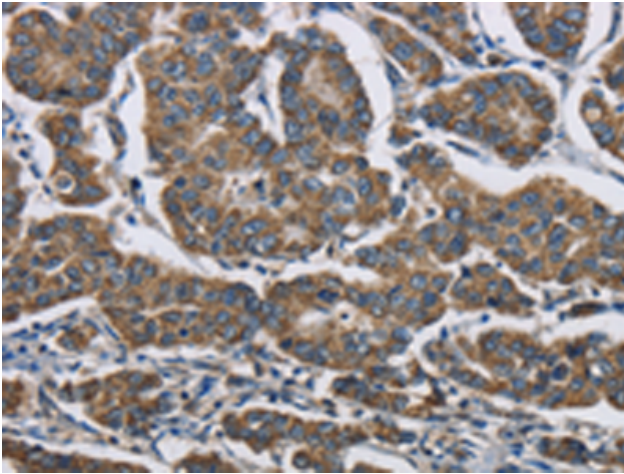
**Purification:** Antigen affinity purification

**Species Reactivity:** Human

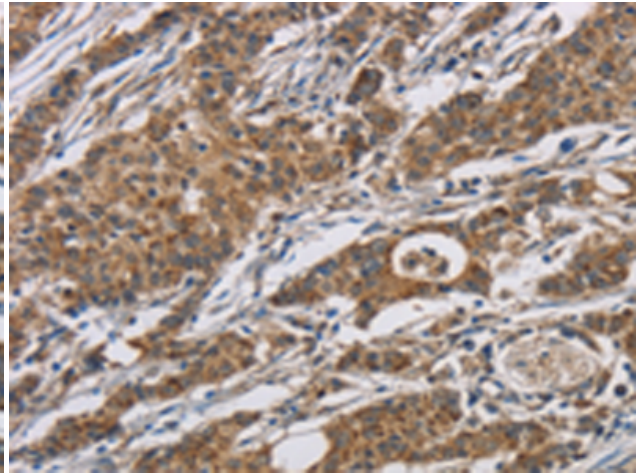
**Constituents:** PBS (without Mg<sup>2+</sup> and Ca<sup>2+</sup>), pH 7.4, 150 mM NaCl, 0.05% Sodium Azide and 40% glycerol

**Research Areas:** Neuroscience, Cardiovascular

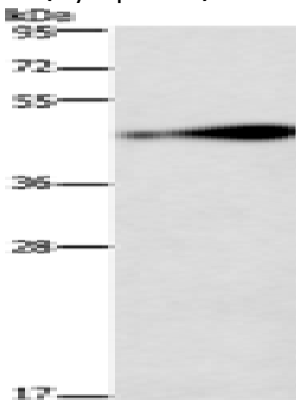
**Storage & Shipping:** Store at -20°C. Avoid repeated freezing and thawing



Immunohistochemistry analysis of paraffin-embedded Human breast cancer tissue using 216226(AGER Antibody) at a dilution of 1/70(Cytoplasm).



Immunohistochemistry analysis of paraffin-embedded Human gastric cancer tissue using 216226(Anti-AGER Antibody) at a dilution of 1/70.



Gel: 10%SDS-PAGE, Lysate: 40 µg;  
Lane: 231 cells;  
Primary antibody: 216226(AGER Antibody) at dilution 1/750;  
Secondary antibody: Goat anti rabbit IgG at 1/8000 dilution;  
Exposure time: 2 minutes