

AGBL5 RABBIT PAB

Cat.#: S216957

Product Name: Anti-AGBL5 Rabbit Polyclonal Antibody

Synonyms:

UNIPROT ID: Q8NDL9 (Gene Accession - BC007415)

Background: Metalloprotease that mediates tubulin deglutamylation. Specifically catalyzes the deglutamylation of the branching point glutamate side chains generated by post-translational glutamylation in proteins such as tubulins. In contrast, it is not able to act as a long-chain deglutamylation that shortens long polyglutamate chains, a process catalyzed by AGTPBP1/CCP1, AGBL1/CCP4 and AGBL4/CCP6.

Immunogen: Fusion protein of human AGBL5

Applications: ELISA, IHC

Recommended Dilutions: IHC: 25-100; ELISA: 2000-5000

Host Species: Rabbit

Clonality: Rabbit Polyclonal

Isotype: Immunogen-specific rabbit IgG

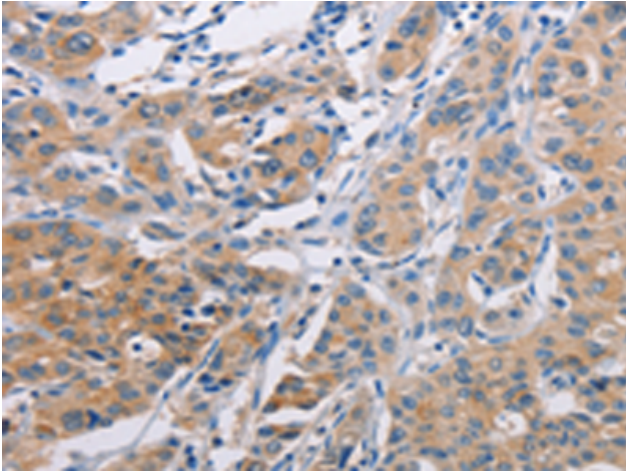
Purification: Antigen affinity purification

Species Reactivity: Human

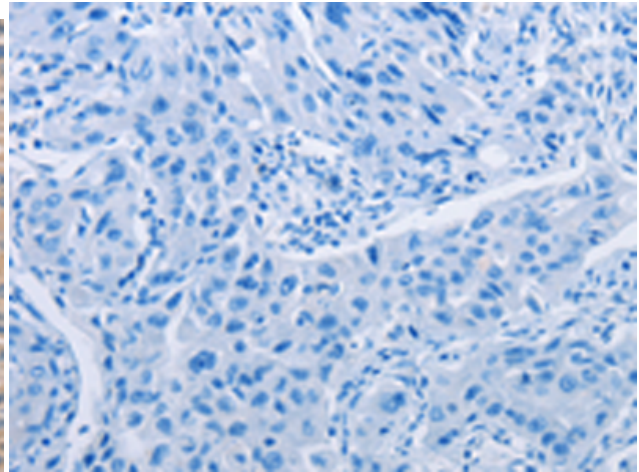
Constituents: PBS (without Mg²⁺ and Ca²⁺), pH 7.4, 150 mM NaCl, 0.05% Sodium Azide and 40% glycerol

Research Areas: Cell Biology

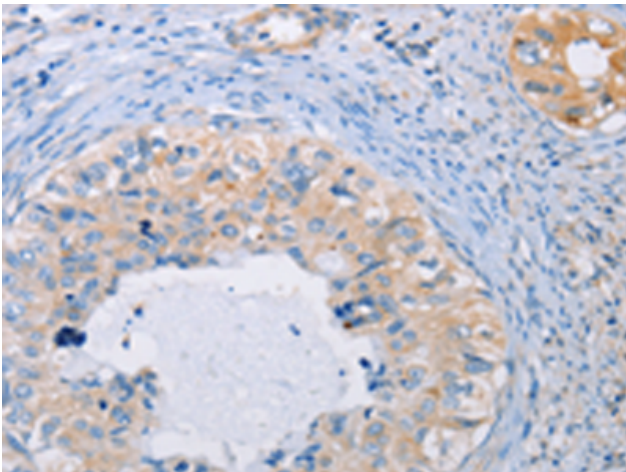
Storage & Shipping: Store at -20°C. Avoid repeated freezing and thawing



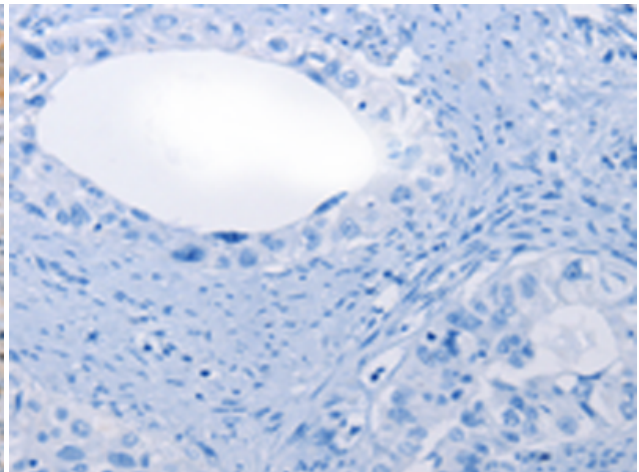
Immunohistochemistry analysis of paraffin embedded Human lung cancer tissue using 216957(AGBL5 Antibody) at a dilution of 1/30(Cytoplasm).



In comparison with the IHC on the left, the same paraffin-embedded Human lung cancer tissue is first treated with the fusion protein and then with 216957(Anti-AGBL5 Antibody) at dilution 1/30.



The image on the left is immunohistochemistry of paraffin-embedded Human cervical cancer tissue using 216957(Anti-AGBL5 Antibody) at a dilution of 1/30.



In comparison with the IHC on the left, the same paraffin-embedded Human cervical cancer tissue is first treated with fusion protein and then with D221535(Anti-AGBL5 Antibody) at dilution 1/30.