

AGBL3 RABBIT PAB

Cat.#: S216958

Product Name: Anti-AGBL3 Rabbit Polyclonal Antibody

Synonyms: CCP3

UNIPROT ID: Q8NEM8 (Gene Accession - BC030651)

Background: Metalloprotease that mediates both deglutamylation and deaspartylation of target proteins. Catalyzes the deglutamylation of polyglutamate side chains generated by post-translational polyglutamylation in proteins such as tubulins. Also removes gene-encoded polyglutamates or polyaspartates from the carboxy-terminus of target proteins such as MYLK. Does not show dephosphorylation or deglycosylation activities from the carboxy-terminus of tubulin.

Immunogen: Fusion protein of human AGBL3

Applications: ELISA, WB, IHC

Recommended Dilutions: IHC: 50-200;WB: 500-2000;ELISA: 5000-10000

Host Species: Rabbit

Clonality: Rabbit Polyclonal

Isotype: Immunogen-specific rabbit IgG

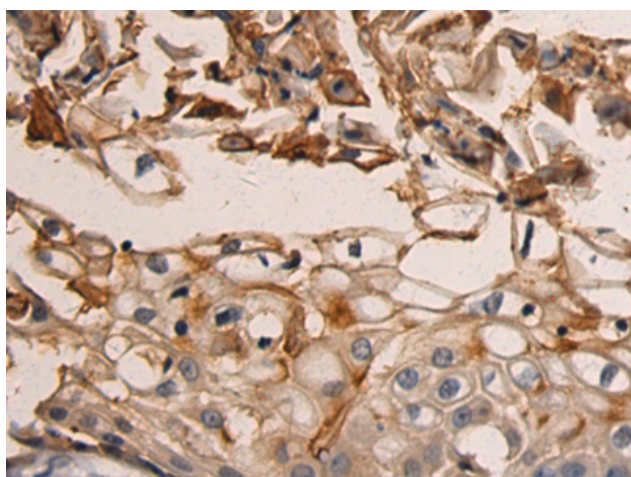
Purification: Antigen affinity purification

Species Reactivity: Human, Mouse

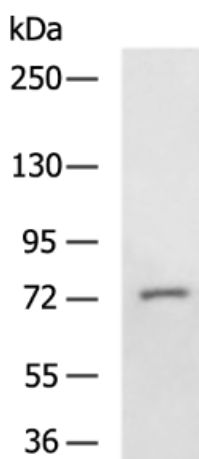
Constituents: PBS (without Mg²⁺ and Ca²⁺), pH 7.4, 150 mM NaCl, 0.05% Sodium Azide and 40% glycerol

Research Areas: Signal Transduction, Cell Biology

Storage & Shipping: Store at -20°C. Avoid repeated freezing and thawing



Immunohistochemistry analysis of paraffin-embedded Human esophagus cancer tissue using 216958(AGBL3 Antibody) at a dilution of 1/60(Cytoplasm).



Gel: 6%SDS-PAGE, Lysate: 40 µg;
Lane: Mouse liver tissue lysate;
Primary antibody: 216958(AGBL3 Antibody) at dilution 1/500;
Secondary antibody: HRP-conjugated Goat anti rabbit IgG at 1/5000 dilution;
Exposure time: 1 minute