

AGAP4 RABBIT PAB

Cat.#: S221305

Product Name: Anti-AGAP4 Rabbit Polyclonal Antibody

Synonyms: AGAP8; MRIP2; AGAP-4; AGAP-8; CTGLF1; CTGLF5

UNIPROT ID: Q96P64 (Gene Accession - NP_001263272)

Background: AGAP4(also known as Arf-GAP with GTPase, ANK repeat and PH domain-containing protein 4) is a GTPase activating protein. It is overexpressed in cancer cells, prevents apoptosis and promotes cancer cell invasion. AGAP4 and other AGAP proteins likely function in the secretory pathway, which could explain a link with the invasive behavior of cancer cells. Reliable antibodies would be invaluable for studies of the physiologic function of the proteins and how is may be linked to cancer cell invasive behavior.

Immunogen: Synthetic peptide of human AGAP4

Applications: ELISA, IHC

Recommended Dilutions: IHC: 20-100; ELISA: 5000-10000

Host Species: Rabbit

Clonality: Rabbit Polyclonal

Isotype: Immunogen-specific rabbit IgG

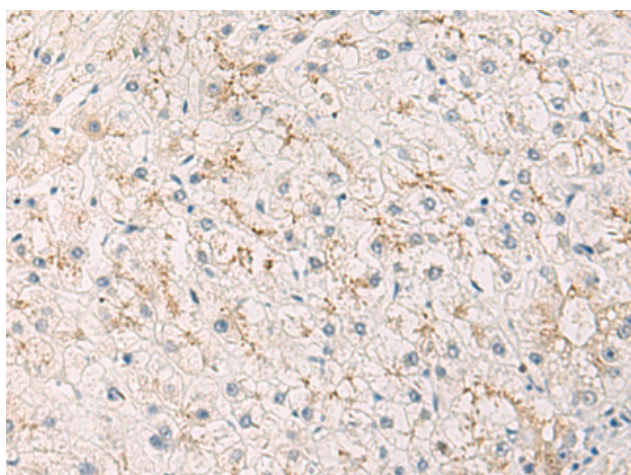
Purification: Antigen affinity purification

Species Reactivity: Human

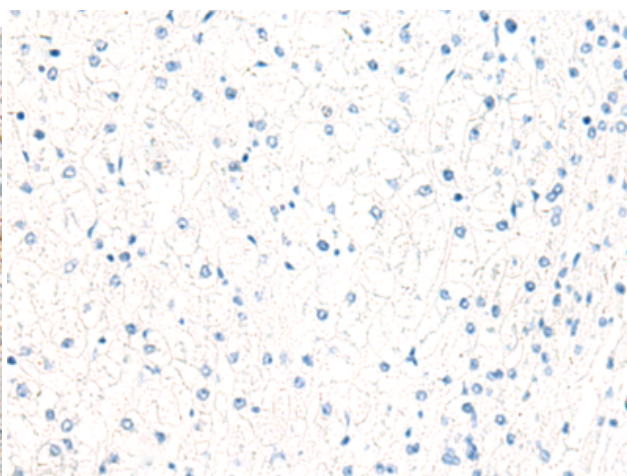
Constituents: PBS (without Mg²⁺ and Ca²⁺), pH 7.4, 150 mM NaCl, 0.05% Sodium Azide and 40% glycerol

Research Areas: Signal Transduction

Storage & Shipping: Store at -20°C. Avoid repeated freezing and thawing



Immunohistochemistry analysis of paraffin embedded Human liver cancer tissue using 221305(AGAP4 Antibody) at a dilution of 1/40(Cytoplasm).



In comparison with the IHC on the left, the same paraffin-embedded Human liver cancer tissue is first treated with the synthetic peptide and then with 221305(Anti-AGAP4 Antibody) at dilution 1/40.