

## ADSS 2 RABBIT MAB

**Cat.#:** N261805

**Product Name:** Anti-AdSS 2 Rabbit Monoclonal Antibody

**Synonyms:** ADEH; ADSS 2

**UNIPROT ID:** P30520

**Background:** Plays an important role in the de novo pathway and in the salvage pathway of purine nucleotide biosynthesis. Catalyzes the first committed step in the biosynthesis of AMP from IMP.

**Immunogen:** Recombinant protein of human AdSS 2

**Applications:** WB,ICC/IF

**Recommended Dilutions:** WB: 1/500-1/1000 IF: 1/50-1/200

**Host Species:** Rabbit

**Clonality:** Rabbit Monoclonal

**Clone ID:** R05-8F8

**MW:** Calculated MW: 50 kDa; Observed MW: 50 kDa

**Isotype:** IgG

**Purification:** Affinity Purified

**Species Reactivity:** Human,Mouse,Rat

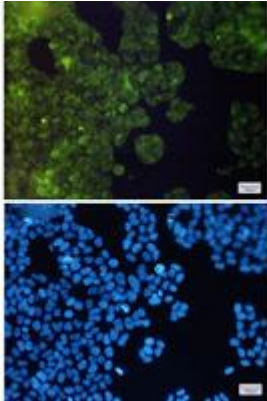
**Conjugation:** Unconjugated

**Modification:** Unmodified

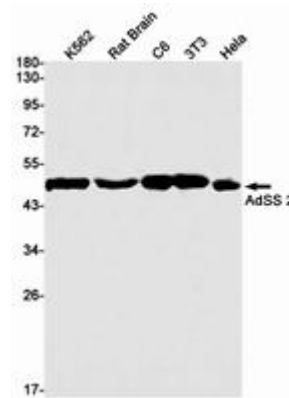
**Constituents:** PBS (without Mg<sup>2+</sup> and Ca<sup>2+</sup>), pH 7.3 containing 50% glycerol, 0.5% BSA and 0.02% sodium azide

**Research Areas:** Epigenetics and Nuclear Signaling

**Storage & Shipping:** Store at -20°C. Avoid repeated freezing and thawing



Immunocytochemistry analysis of AdSS 2 (green) in HeLa using AdSS 2 antibody, and DAPI (blue)



Western blot analysis of AdSS 2 in K562, rat Brain, C6, 3T3, HeLa lysates using AdSS 2 antibody.