

## ADRM1 RABBIT PAB

**Cat.#:** S218875

**Product Name:** Anti-ADRM1 Rabbit Polyclonal Antibody

**Synonyms:** ARM1; ARM-1; GPI10

**UNIPROT ID:** Q16186 (Gene Accession - BC017245 )

**Background:** This gene encodes a member of the adhesion regulating molecule 1 protein family. The encoded protein is a component of the proteasome where it acts as a ubiquitin receptor and recruits the deubiquitinating enzyme, ubiquitin carboxyl-terminal hydrolase L5. Increased levels of the encoded protein are associated with increased cell adhesion, which is likely an indirect effect of this intracellular protein. Dysregulation of this gene has been implicated in carcinogenesis. Alternative splicing results in multiple transcript variants.

**Immunogen:** Fusion protein of human ADRM1

**Applications:** ELISA, IHC

**Recommended Dilutions:** IHC: 50-300; ELISA: 5000-10000

**Host Species:** Rabbit

**Clonality:** Rabbit Polyclonal

**Isotype:** Immunogen-specific rabbit IgG

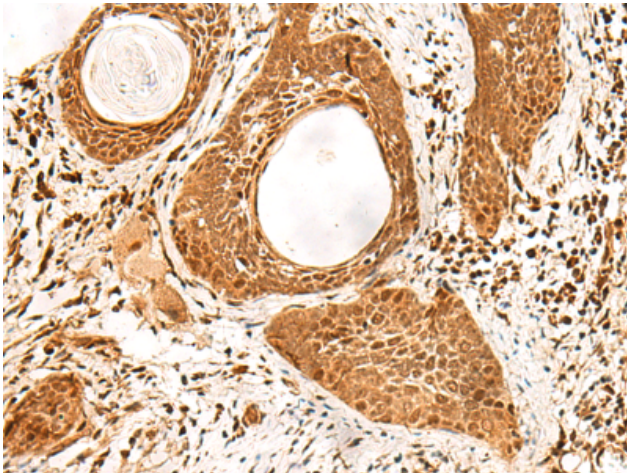
**Purification:** Antigen affinity purification

**Species Reactivity:** Human, Mouse, Rat

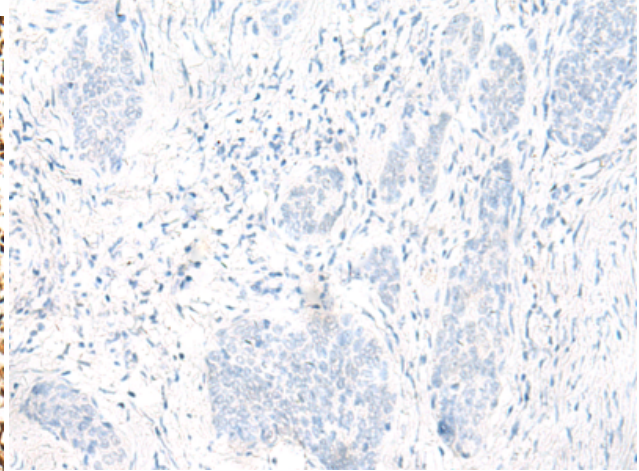
**Constituents:** PBS (without Mg<sup>2+</sup> and Ca<sup>2+</sup>), pH 7.4, 150 mM NaCl, 0.05% Sodium Azide and 40% glycerol

**Research Areas:** Signal Transduction

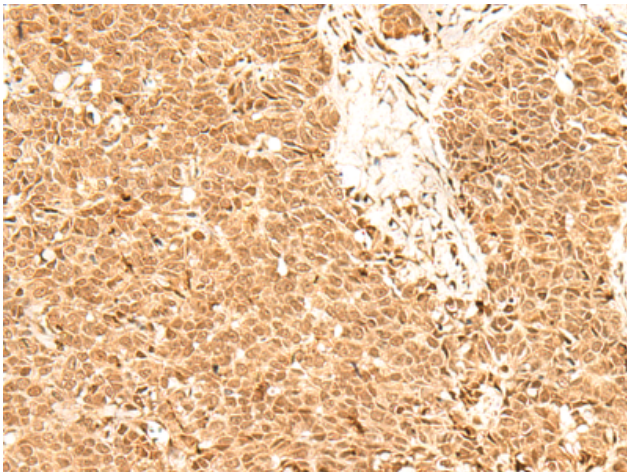
**Storage & Shipping:** Store at -20°C. Avoid repeated freezing and thawing



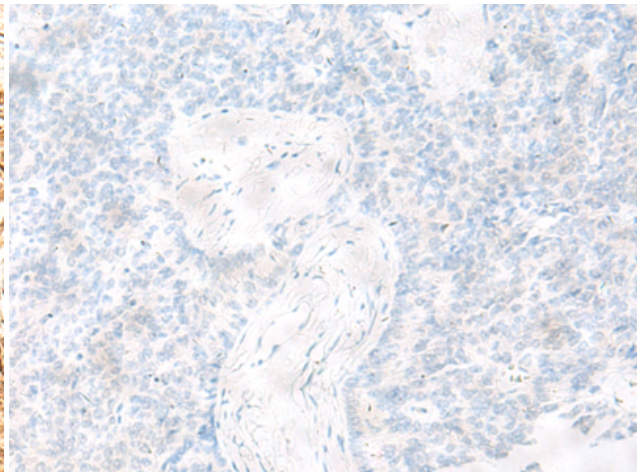
Immunohistochemistry analysis of paraffin embedded Human esophagus cancer tissue using 218875(ADRM1 Antibody) at a dilution of 1/70(Nucleus and Cytoplasm).



In comparison with the IHC on the left, the same paraffin-embedded Human esophagus cancer tissue is first treated with the fusion protein and then with 218875(Anti-ADRM1 Antibody) at dilution 1/70.



The image on the left is immunohistochemistry of paraffin-embedded Human ovarian cancer tissue using 218875(Anti-ADRM1 Antibody) at a dilution of 1/70.



In comparison with the IHC on the left, the same paraffin-embedded Human ovarian cancer tissue is first treated with fusion protein and then with D225421(Anti-ADRM1 Antibody) at dilution 1/70.