

## ADRB1 RABBIT PAB

**Cat.#:** S219620

**Product Name:** Anti-ADRB1 Rabbit Polyclonal Antibody

**Synonyms:** RHR, BIAR, ADRB1R, BETA1AR

**UNIPROT ID:** P08588

**Background:** The adrenergic receptors (subtypes alpha 1, alpha 2, beta 1, and beta 2) are a prototypic family of guanine nucleotide binding regulatory protein-coupled receptors that mediate the physiological effects of the hormone epinephrine and the neurotransmitter norepinephrine. Specific polymorphisms in this gene have been shown to affect the resting heart rate and can be involved in heart failure.

**Immunogen:** Synthetic peptide of human ADRB1

**Applications:** ELISA, IHC

**Recommended Dilutions:** IHC: 25-100; ELISA: 1000-5000

**Host Species:** Rabbit

**Clonality:** Rabbit Polyclonal

**Isotype:** Immunogen-specific rabbit IgG

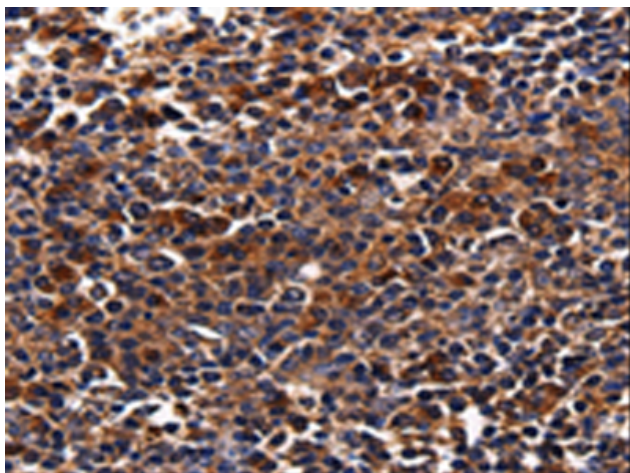
**Purification:** Antigen affinity purification

**Species Reactivity:** Human, Mouse, Rat

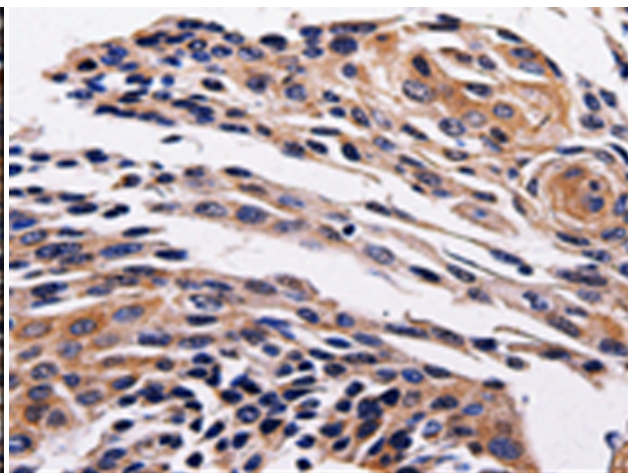
**Constituents:** PBS (without Mg<sup>2+</sup> and Ca<sup>2+</sup>), pH 7.4, 150 mM NaCl, 0.05% Sodium Azide and 40% glycerol

**Research Areas:** Signal Transduction, Cell Biology, Neuroscience, Cardiovascular

**Storage & Shipping:** Store at -20°C. Avoid repeated freezing and thawing



Immunohistochemistry analysis of paraffin-embedded Human tonsil cancer tissue using 219620(ADRB1 Antibody) at a dilution of 1/25(Cell membrane, Cytoplasm).



Immunohistochemistry analysis of paraffin-embedded Human cervical cancer tissue using 219620(Anti-ADRB1 Antibody) at a dilution of 1/25.