

ADPRS RABBIT PAB

Cat.#: S220310

Product Name: Anti-ADPRS Rabbit Polyclonal Antibody

Synonyms: ARH3; ADPRHL2; CONDSIAS

UNIPROT ID: Q9NX46 (Gene Accession - NP_060295)

Background: This gene encodes a member of the ADP-ribosylglycohydrolase family. The encoded enzyme catalyzes the removal of ADP-ribose from ADP-ribosylated proteins. This enzyme localizes to the mitochondria, in addition to the nucleus and cytoplasm.

Immunogen: Synthetic peptide of human ADPRS

Applications: ELISA, IHC

Recommended Dilutions: IHC: 50-200; ELISA: 5000-10000

Host Species: Rabbit

Clonality: Rabbit Polyclonal

Isotype: Immunogen-specific rabbit IgG

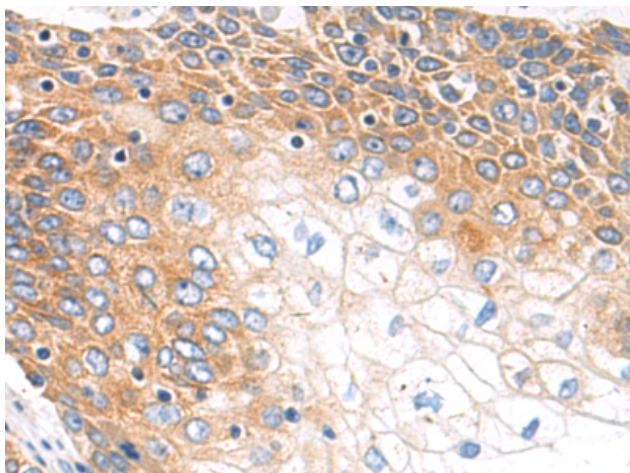
Purification: Antigen affinity purification

Species Reactivity: Human, Mouse

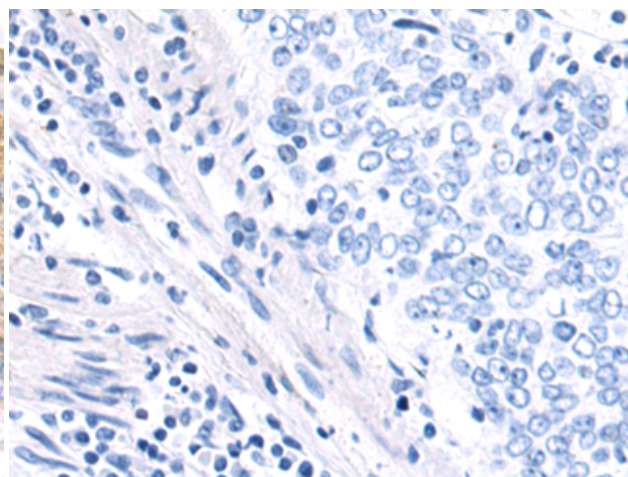
Constituents: PBS (without Mg²⁺ and Ca²⁺), pH 7.4, 150 mM NaCl, 0.05% Sodium Azide and 40% glycerol

Research Areas: Cell Biology

Storage & Shipping: Store at -20°C. Avoid repeated freezing and thawing



Immunohistochemistry analysis of paraffin embedded Human esophagus cancer tissue using 220310(ADPRS Antibody) at a dilution of 1/50(Cytoplasm).



In comparison with the IHC on the left, the same paraffin-embedded Human esophagus cancer tissue is first treated with the synthetic peptide and then with 220310(Anti-ADPRS Antibody) at dilution 1/50.