

## ADM RABBIT PAB

**Cat.#:** S213340

**Product Name:** Anti-ADM Rabbit Polyclonal Antibody

**Synonyms:** AM; PAMP

**UNIPROT ID:** P35318 (Gene Accession - NP\_001115 )

**Background:** The protein encoded by this gene is a preprohormone which is cleaved to form two biologically active peptides, adrenomedullin and proadrenomedullin N-terminal 20 peptide.

Adrenomedullin is a 52 aa peptide with several functions, including vasodilation, regulation of hormone secretion, promotion of angiogenesis, and antimicrobial activity. The antimicrobial activity is antibacterial, as the peptide has been shown to kill E. coli and S. aureus at low concentration.

**Immunogen:** Synthetic peptide of human ADM

**Applications:** ELISA, WB, IHC

**Recommended Dilutions:** IHC: 25-50;WB: 200-1000;ELISA: 5000-10000

**Host Species:** Rabbit

**Clonality:** Rabbit Polyclonal

**Isotype:** Immunogen-specific rabbit IgG

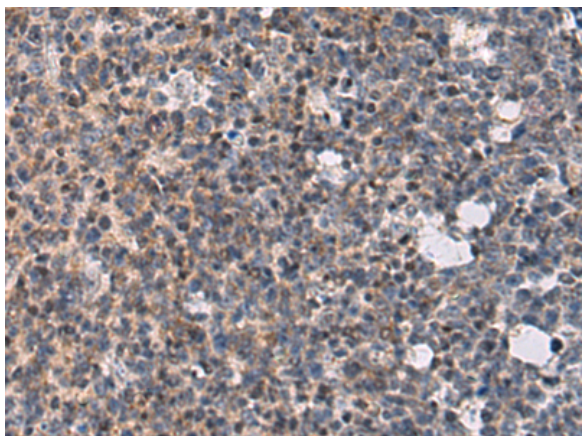
**Purification:** Antigen affinity purification

**Species Reactivity:** Human, Mouse

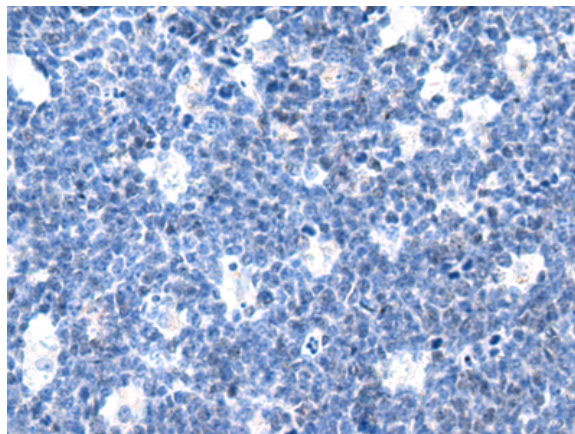
**Constituents:** PBS (without Mg<sup>2+</sup> and Ca<sup>2+</sup>), pH 7.4, 150 mM NaCl, 0.05% Sodium Azide and 40% glycerol

**Research Areas:** Signal Transduction, Cancer, Cardiovascular, Metabolism, Neuroscience

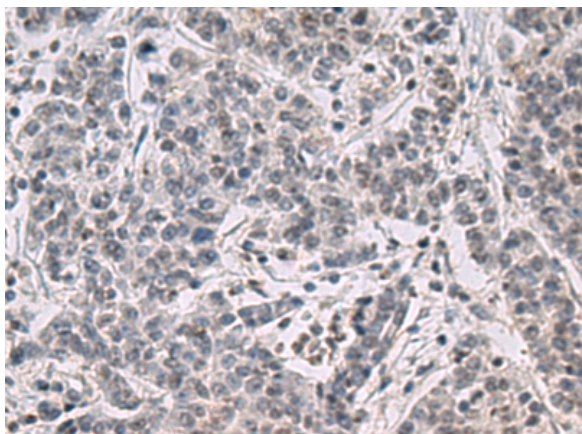
**Storage & Shipping:** Store at -20°C. Avoid repeated freezing and thawing



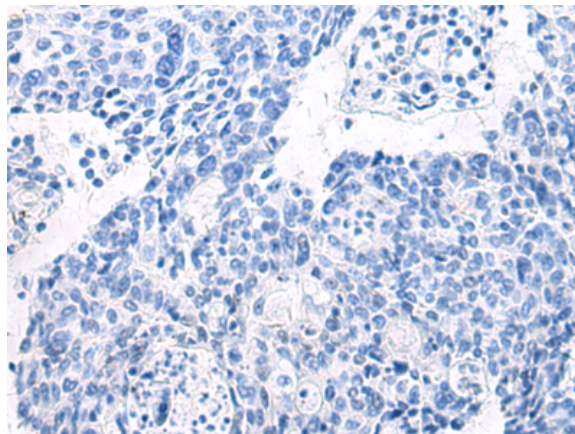
Immunohistochemistry analysis of paraffin embedded Human tonsil tissue using 213340(ADM Antibody) at a dilution of 1/30(Secreted).



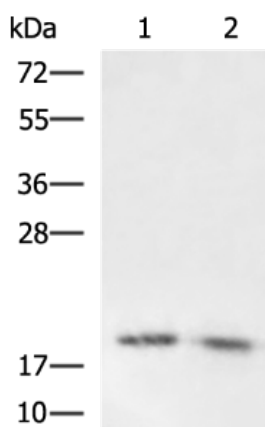
In comparison with the IHC on the left, the same paraffin-embedded Human tonsil tissue is first treated with the synthetic peptide and then with 213340(Anti-ADM Antibody) at dilution 1/30.



The image on the left is immunohistochemistry of paraffin-embedded Human colorectal cancer tissue using 213340(Anti-ADM Antibody) at a dilution of 1/30.



In comparison with the IHC on the left, the same paraffin-embedded Human colorectal cancer tissue is first treated with synthetic peptide and then with D160026(Anti-ADM Antibody) at dilution 1/30.



Gel: 12%SDS-PAGE, Lysate: 40 µg;  
 Lane 1-2: Mouse heart tissue and Mouse kidney tissue lysates;  
 Primary antibody: 213340(ADM Antibody) at dilution 1/600;  
 Secondary antibody: HRP-conjugated Goat anti rabbit IgG at 1/5000 dilution;  
 Exposure time: 2 minutes



# Product Description

Pioneering GTPase and Oncogene Product Development since 2010

---