

ADIPOQ RABBIT PAB

Cat.#: S210734

Product Name: Anti-ADIPOQ Rabbit Polyclonal Antibody

Synonyms: ACDC; ADPN; APMI; APM-I; GBP28; ACRP30; ADIPQTLI

UNIPROT ID: Q15848 (Gene Accession - BC096308)

Background: This gene is expressed in adipose tissue exclusively. It encodes a protein with similarity to collagens X and VIII and complement factor C1q. The encoded protein circulates in the plasma and is involved with metabolic and hormonal processes. Mutations in this gene are associated with adiponectin deficiency. Multiple alternatively spliced variants, encoding the same protein, have been identified.

Immunogen: Fusion protein of human ADIPOQ

Applications: ELISA, WB, IHC

Recommended Dilutions: IHC: 15-50;WB: 200-1000;ELISA: 500-1000

Host Species: Rabbit

Clonality: Rabbit Polyclonal

Isotype: Immunogen-specific rabbit IgG

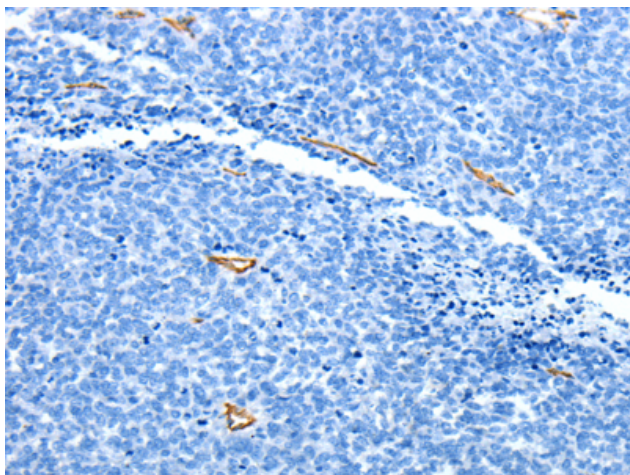
Purification: Antigen affinity purification

Species Reactivity: Human, Mouse

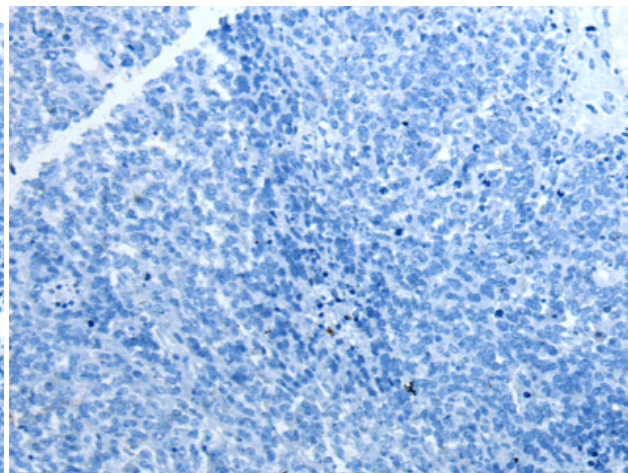
Constituents: PBS (without Mg²⁺ and Ca²⁺), pH 7.4, 150 mM NaCl, 0.05% Sodium Azide and 40% glycerol

Research Areas: Signal Transduction, Cancer, Cardiovascular, Metabolism, Neuroscience, Stem Cells

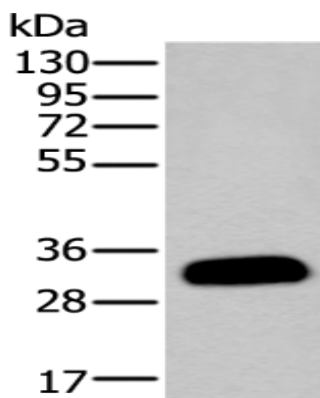
Storage & Shipping: Store at -20°C. Avoid repeated freezing and thawing



Immunohistochemistry analysis of paraffin embedded Human ovarian cancer tissue using 210734(ADIPOQ Antibody) at a dilution of 1/15(Secreted).



In comparison with the IHC on the left, the same paraffin-embedded Human ovarian cancer tissue is first treated with the fusion protein and then with 210734(Anti-ADIPOQ Antibody) at dilution 1/15.



Gel: 8%SDS-PAGE, Lysate: 40 µg;

Lane: Mouse serum ;

Primary antibody: 210734(ADIPOQ Antibody) at dilution 1/200;

Secondary antibody: Goat anti rabbit IgG at 1/8000 dilution;

Exposure time: 5 seconds