

ADGRL4 RABBIT PAB

Cat.#: S221982

Product Name: Anti-ADGRL4 Rabbit Polyclonal Antibody

Synonyms: ETL; ELTD1; KPG_003

UNIPROT ID: Q9HBW9 (Gene Accession - NP_071442)

Background: Endothelial orphan receptor that acts as a key regulator of angiogenesis.

Immunogen: Synthetic peptide of human ADGRL4

Applications: ELISA, IHC

Recommended Dilutions: IHC: 25-50; ELISA: 5000-10000

Host Species: Rabbit

Clonality: Rabbit Polyclonal

Isotype: Immunogen-specific rabbit IgG

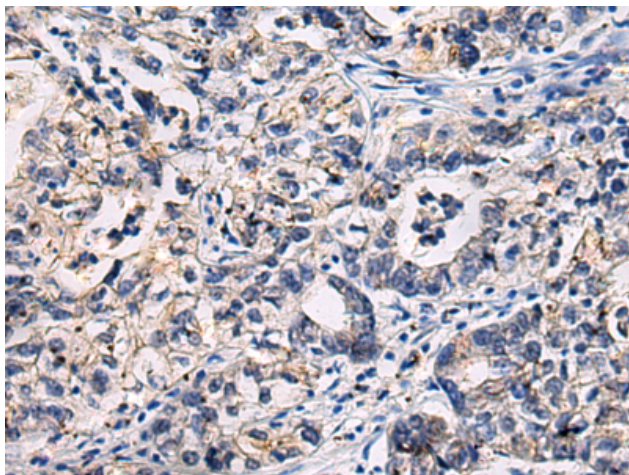
Purification: Antigen affinity purification

Species Reactivity: Human, Mouse, Rat

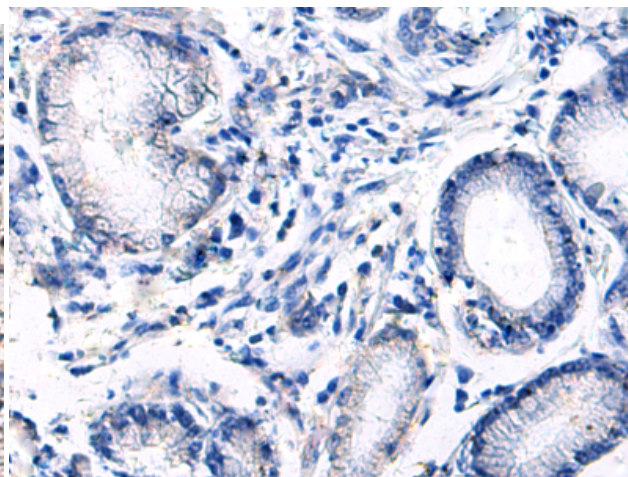
Constituents: PBS (without Mg²⁺ and Ca²⁺), pH 7.4, 150 mM NaCl, 0.05% Sodium Azide and 40% glycerol

Research Areas: Signal Transduction

Storage & Shipping: Store at -20°C. Avoid repeated freezing and thawing



Immunohistochemistry analysis of paraffin embedded Human gastric cancer tissue using 221982(ADGRL4 Antibody) at a dilution of 1/35(Cytoplasm).



In comparison with the IHC on the left, the same paraffin-embedded Human gastric cancer tissue is first treated with the synthetic peptide and then with 221982(Anti-ADGRL4 Antibody) at dilution 1/35.