

## ADGRG6 RABBIT PAB

**Cat.#:** S222103

**Product Name:** Anti-ADGRG6 Rabbit Polyclonal Antibody

**Synonyms:** APG1; DREG; VIGR; LCCS9; PR126; GPRI26; PSITP2

**UNIPROT ID:** Q86SQ4 (Gene Accession - NP\_940971)

**Background:** This gene, which is upregulated in human umbilical vein endothelial cells, encodes a G protein-coupled receptor. Variations in this gene can affect a person's stature. Multiple transcript variants encoding different proteins have been found for this gene.

**Immunogen:** Synthetic peptide of human ADGRG6

**Applications:** ELISA, IHC

**Recommended Dilutions:** IHC: 30-150; ELISA: 5000-10000

**Host Species:** Rabbit

**Clonality:** Rabbit Polyclonal

**Isotype:** Immunogen-specific rabbit IgG

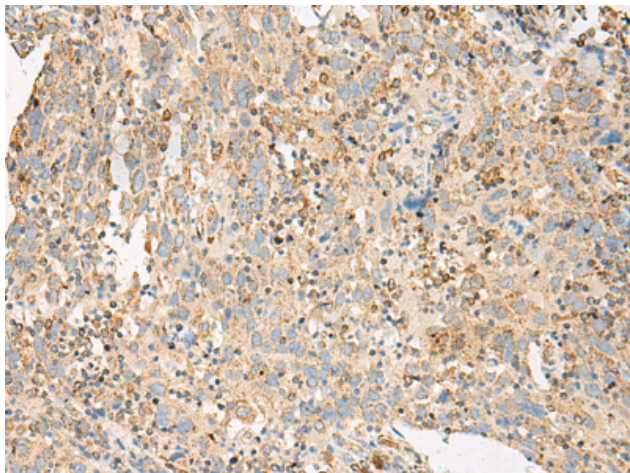
**Purification:** Antigen affinity purification

**Species Reactivity:** Human

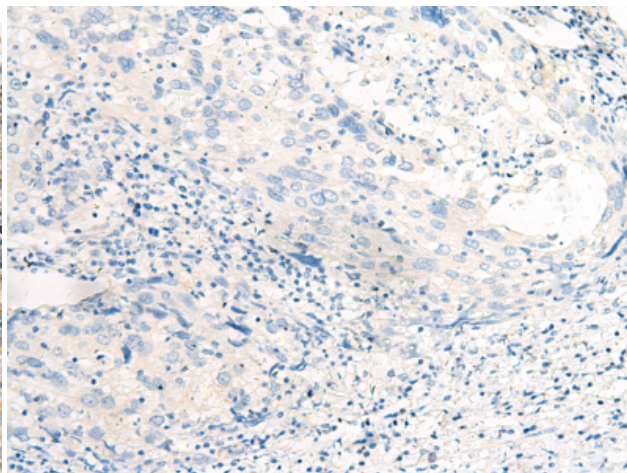
**Constituents:** PBS (without Mg<sup>2+</sup> and Ca<sup>2+</sup>), pH 7.4, 150 mM NaCl, 0.05% Sodium Azide and 40% glycerol

**Research Areas:** Signal Transduction

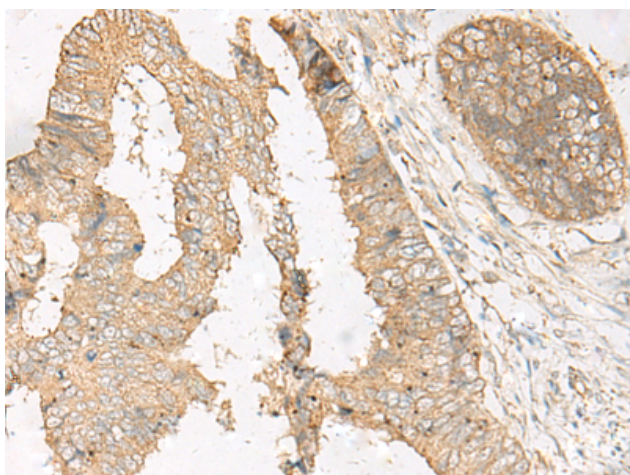
**Storage & Shipping:** Store at -20°C. Avoid repeated freezing and thawing



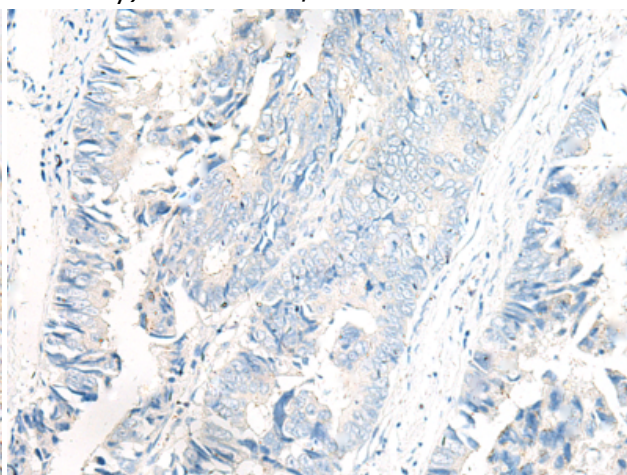
Immunohistochemistry analysis of paraffin embedded Human cervical cancer tissue using 222103(ADGRG6 Antibody) at a dilution of 1/20(Cell membrane).



In comparison with the IHC on the left, the same paraffin-embedded Human cervical cancer tissue is first treated with the synthetic peptide and then with 222103(Anti-ADGRG6 Antibody) at dilution 1/20.



The image on the left is immunohistochemistry of paraffin-embedded Human colorectal cancer tissue using 222103(Anti-ADGRG6 Antibody) at a dilution of 1/20.



In comparison with the IHC on the left, the same paraffin-embedded Human colorectal cancer tissue is first treated with synthetic peptide and then with D264026(Anti-ADGRG6 Antibody) at dilution 1/20.