

## ADGRG2 RABBIT PAB

**Cat.#:** S213582

**Product Name:** Anti-ADGRG2 Rabbit Polyclonal Antibody

**Synonyms:** HE6; EDDM6; GPR64; CBAVDX; TM7LN2

**UNIPROT ID:** Q8IZP9 (Gene Accession - NP\_001073327 )

**Background:** This gene encodes a member of the G protein-coupled receptor family described as an epididymis-specific transmembrane protein. The encoded protein may be proteolytically processed as it contains a motif shown to be a protein scission motif in some members of this family (PMID: 11973329). Multiple transcript variants encoding different isoforms have been found for this gene. [provided by RefSeq, Aug 2011]

**Immunogen:** Synthetic peptide of human ADGRG2

**Applications:** ELISA, IHC

**Recommended Dilutions:** IHC: 50-200; ELISA: 2000-10000

**Host Species:** Rabbit

**Clonality:** Rabbit Polyclonal

**Isotype:** Immunogen-specific rabbit IgG

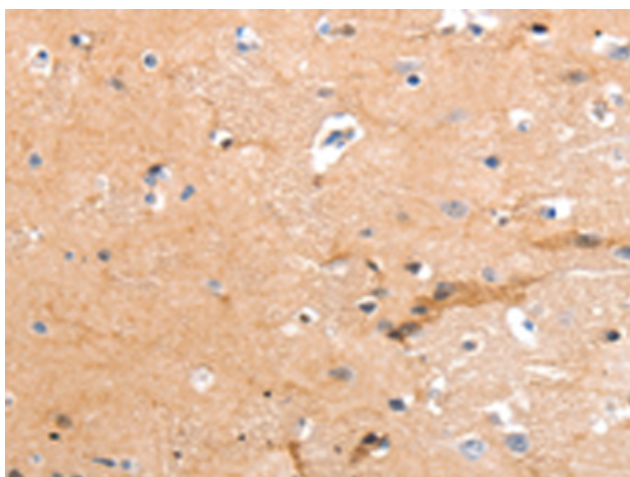
**Purification:** Antigen affinity purification

**Species Reactivity:** Human

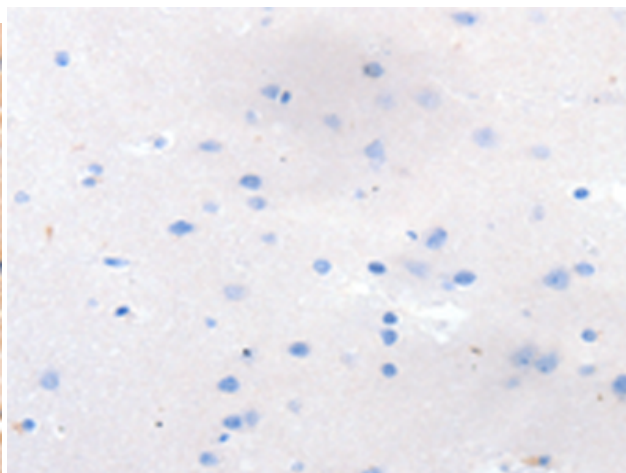
**Constituents:** PBS (without Mg<sup>2+</sup> and Ca<sup>2+</sup>), pH 7.4, 150 mM NaCl, 0.05% Sodium Azide and 40% glycerol

**Research Areas:** Signal Transduction, Stem Cells, Developmental Biology

**Storage & Shipping:** Store at -20°C. Avoid repeated freezing and thawing



Immunohistochemistry analysis of paraffin embedded Human brain tissue using 213582(ADGRG2 Antibody) at a dilution of 1/55(Cytoplasm).



In comparison with the IHC on the left, the same paraffin-embedded Human brain tissue is first treated with the synthetic peptide and then with 213582(Anti-ADGRG2 Antibody) at dilution 1/55.