

ADGRF1 RABBIT PAB

Cat.#: S222102

Product Name: Anti-ADGRF1 Rabbit Polyclonal Antibody

Synonyms: PGR19; GPR110; KPG_012; hGPCR36

UNIPROT ID: Q5T601 (Gene Accession - NP_722582)

Background: Orphan receptor.

Immunogen: Synthetic peptide of human ADGRF1

Applications: ELISA, IHC

Recommended Dilutions: IHC: 30-150; ELISA: 5000-10000

Host Species: Rabbit

Clonality: Rabbit Polyclonal

Isotype: Immunogen-specific rabbit IgG

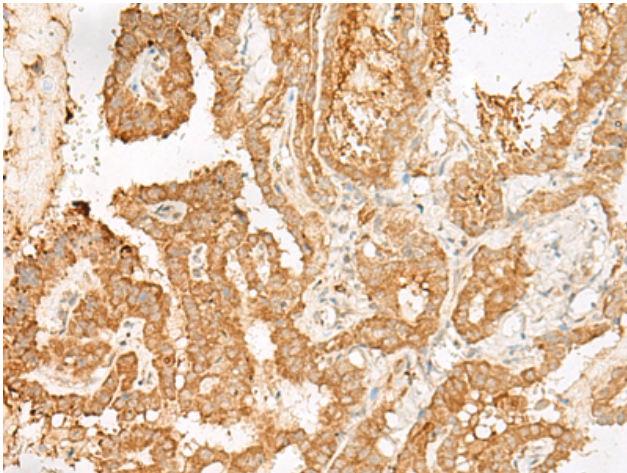
Purification: Antigen affinity purification

Species Reactivity: Human

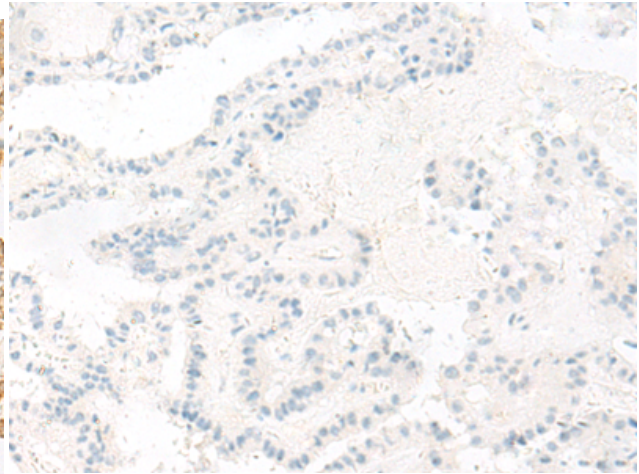
Constituents: PBS (without Mg²⁺ and Ca²⁺), pH 7.4, 150 mM NaCl, 0.05% Sodium Azide and 40% glycerol

Research Areas: Signal Transduction, Neuroscience

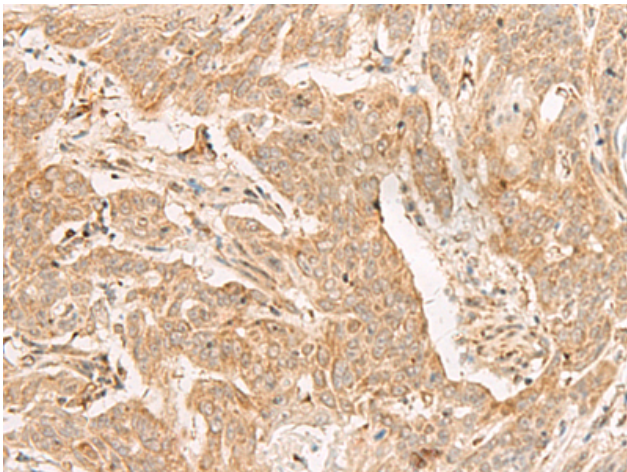
Storage & Shipping: Store at -20°C. Avoid repeated freezing and thawing



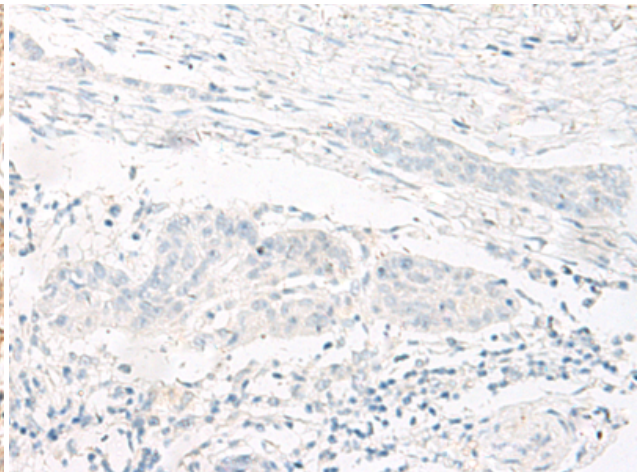
Immunohistochemistry analysis of paraffin embedded Human thyroid cancer tissue using 222102(ADGRF1 Antibody) at a dilution of 1/25(Cell membrane).



In comparison with the IHC on the left, the same paraffin-embedded Human thyroid cancer tissue is first treated with the synthetic peptide and then with 222102(Anti-ADGRF1 Antibody) at dilution 1/25.



The image on the left is immunohistochemistry of paraffin-embedded Human esophagus cancer tissue using 222102(Anti-ADGRF1 Antibody) at a dilution of 1/25.



In comparison with the IHC on the left, the same paraffin-embedded Human esophagus cancer tissue is first treated with synthetic peptide and then with D264023(Anti-ADGRF1 Antibody) at dilution 1/25.