

ADGRB2 RABBIT PAB

Cat.#: S220397

Product Name: Anti-ADGRB2 Rabbit Polyclonal Antibody

Synonyms: BAI2

UNIPROT ID: O60241 (Gene Accession - NP_001281264)

Background: This gene encodes a a seven-span transmembrane protein that is thought to be a member of the secretin receptor family. The encoded protein is a brain-specific inhibitor of angiogenesis. The mature peptide may be further cleaved into additional products (PMID:20367554). Alternative splicing results in multiple transcript variants.

Immunogen: Synthetic peptide of human ADGRB2

Applications: ELISA, IHC

Recommended Dilutions: IHC: 25-100; ELISA: 1000-2000

Host Species: Rabbit

Clonality: Rabbit Polyclonal

Isotype: Immunogen-specific rabbit IgG

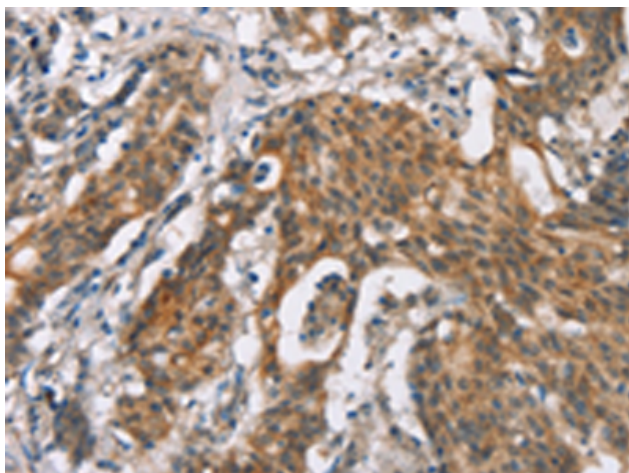
Purification: Antigen affinity purification

Species Reactivity: Human, Mouse

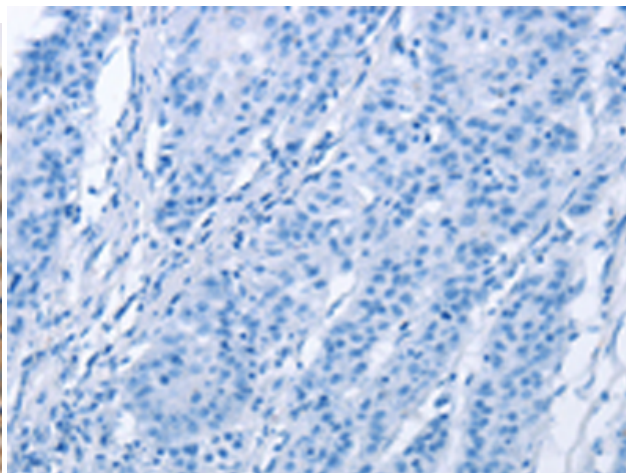
Constituents: PBS (without Mg²⁺ and Ca²⁺), pH 7.4, 150 mM NaCl, 0.05% Sodium Azide and 40% glycerol

Research Areas: Signal Transduction, Neuroscience, Cardiovascular

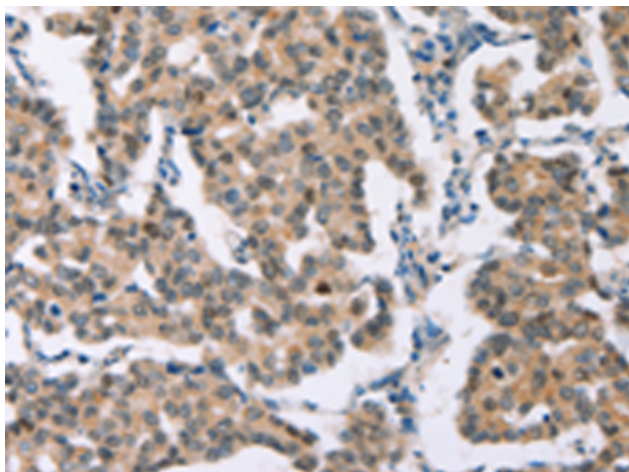
Storage & Shipping: Store at -20°C. Avoid repeated freezing and thawing



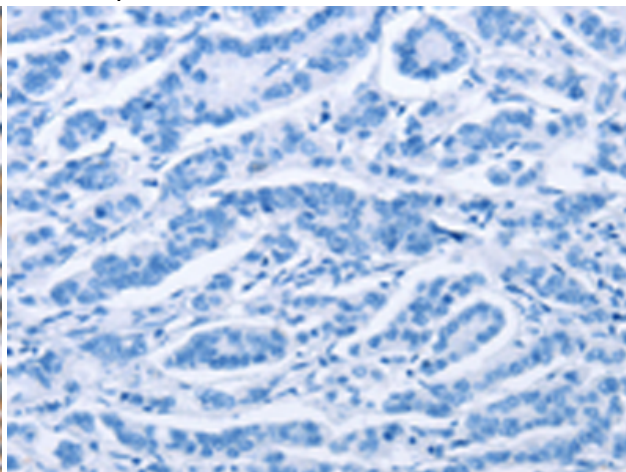
Immunohistochemistry analysis of paraffin embedded Human gastric cancer tissue using 220397 (ADGRB2 Antibody) at a dilution of 1/25 (Cytoplasm).



In comparison with the IHC on the left, the same paraffin-embedded Human gastric cancer tissue is first treated with the synthetic peptide and then with 220397 (Anti-ADGRB2 Antibody) at dilution 1/25.



The image on the left is immunohistochemistry of paraffin-embedded Human breast cancer tissue using 220397 (Anti-ADGRB2 Antibody) at a dilution of 1/25.



In comparison with the IHC on the left, the same paraffin-embedded Human breast cancer tissue is first treated with synthetic peptide and then with D261477 (Anti-ADGRB2 Antibody) at dilution 1/25.