

ADGRA1 RABBIT PAB

Cat.#: S222130

Product Name: Anti-ADGRA1 Rabbit Polyclonal Antibody

Synonyms: GPR123

UNIPROT ID: Q86SQ6 (Gene Accession - XP_005252752)

Background: This gene encodes a protein that belongs to the adhesion family of G-protein-coupled receptors. Members of this family function in several sensory systems and regulate blood pressure, immune responses, food intake and development. A similar protein in rodents is thought to play a role in the regulation of neuronal signaling pathways. Several alternatively spliced transcript variants of this gene have been described, but the full-length nature of some of these variants has not been determined.

Immunogen: Synthetic peptide of human ADGRA1

Applications: ELISA, IHC

Recommended Dilutions: IHC: 50-300; ELISA: 5000-10000

Host Species: Rabbit

Clonality: Rabbit Polyclonal

Isotype: Immunogen-specific rabbit IgG

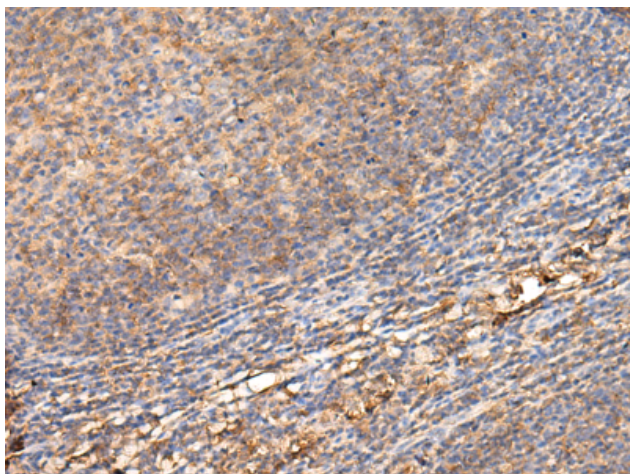
Purification: Antigen affinity purification

Species Reactivity: Human, Mouse

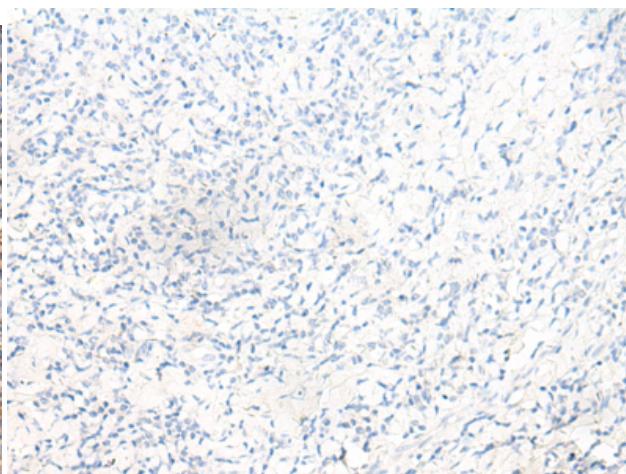
Constituents: PBS (without Mg²⁺ and Ca²⁺), pH 7.4, 150 mM NaCl, 0.05% Sodium Azide and 40% glycerol

Research Areas: Signal Transduction

Storage & Shipping: Store at -20°C. Avoid repeated freezing and thawing



Immunohistochemistry analysis of paraffin embedded Human tonsil tissue using 222130(ADGRA1 Antibody) at a dilution of 1/70(Cell membrane).



In comparison with the IHC on the left, the same paraffin-embedded Human tonsil tissue is first treated with the synthetic peptide and then with 222130(Anti-ADGRA1 Antibody) at dilution 1/70.