

## ADCYAP1 RABBIT PAB

**Cat.#:** S221313

**Product Name:** Anti-ADCYAP1 Rabbit Polyclonal Antibody

**Synonyms:** PACAP

**UNIPROT ID:** P18509 (Gene Accession - NP\_001108 )

**Background:** This gene encodes a secreted proprotein that is further processed into multiple mature peptides. These peptides stimulate adenylate cyclase and increase cyclic adenosine monophosphate (cAMP) levels, resulting in the transcriptional activation of target genes. The products of this gene are key mediators of neuroendocrine stress responses. Alternative splicing results in multiple transcript variants.

**Immunogen:** Synthetic peptide of human ADCYAP1

**Applications:** ELISA, WB, IHC

**Recommended Dilutions:** IHC: 20-100;WB: 200-1000;ELISA: 5000-10000

**Host Species:** Rabbit

**Clonality:** Rabbit Polyclonal

**Isotype:** Immunogen-specific rabbit IgG

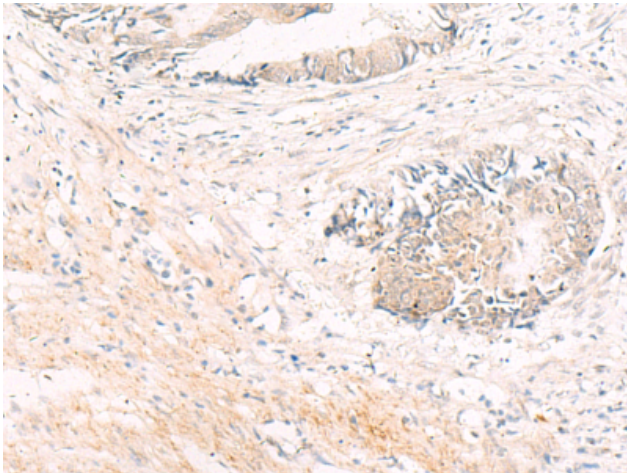
**Purification:** Antigen affinity purification

**Species Reactivity:** Human, Mouse, Rat

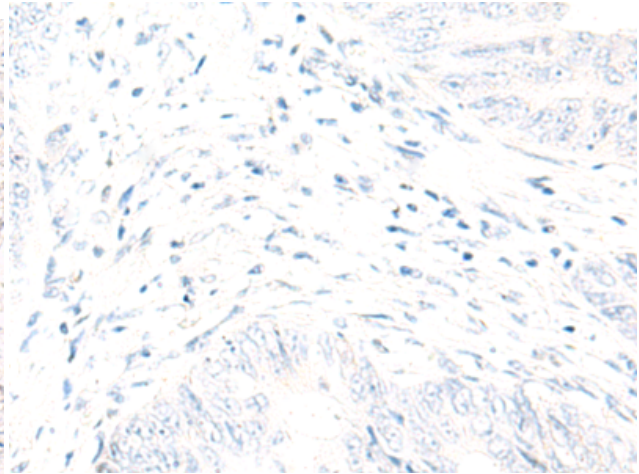
**Constituents:** PBS (without Mg<sup>2+</sup> and Ca<sup>2+</sup>), pH 7.4, 150 mM NaCl, 0.05% Sodium Azide and 40% glycerol

**Research Areas:** Signal Transduction, Neuroscience

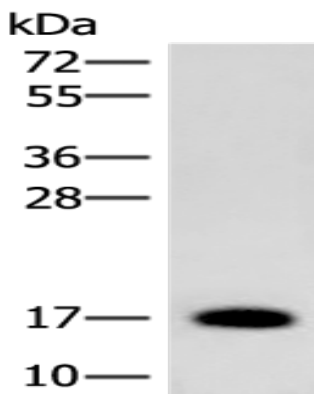
**Storage & Shipping:** Store at -20°C. Avoid repeated freezing and thawing



Immunohistochemistry analysis of paraffin embedded Human colorectal cancer tissue using 221313(ADCYAP1 Antibody) at a dilution of 1/30(Secreted).



In comparison with the IHC on the left, the same paraffin-embedded Human colorectal cancer tissue is first treated with the synthetic peptide and then with 221313(Anti-ADCYAP1 Antibody) at dilution 1/30.



Gel: 12%SDS-PAGE, Lysate: 40 µg;  
Lane: Human cerebrum tissue lysate;  
Primary antibody: 221313(ADCYAP1 Antibody)  
at dilution 1/300;  
Secondary antibody: Goat anti rabbit IgG at  
1/8000 dilution;  
Exposure time: 1 minute