

ADAMTSL1 RABBIT PAB

Cat.#: S216941

Product Name: Anti-ADAMTSL1 Rabbit Polyclonal Antibody

Synonyms: C9orf94; PUNCTIN; ADAMTSR1; ADAMTSL-1

UNIPROT ID: Q8N6G6 (Gene Accession - BC100788)

Background: This gene encodes a secreted protein and member of the ADAMTS (a disintegrin and metalloproteinase with thrombospondin motif) family. This protein lacks the metalloproteinase and disintegrin-like domains, which are typical of the ADAMTS family, but contains other ADAMTS domains, including the thrombospondin type I motif. This protein may have important functions in the extracellular matrix. Alternative splicing results in multiple transcript variants encoding distinct proteins.

Immunogen: Fusion protein of human ADAMTSL1

Applications: ELISA, IHC

Recommended Dilutions: IHC: 15–50; ELISA: 1000–2000

Host Species: Rabbit

Clonality: Rabbit Polyclonal

Isotype: Immunogen-specific rabbit IgG

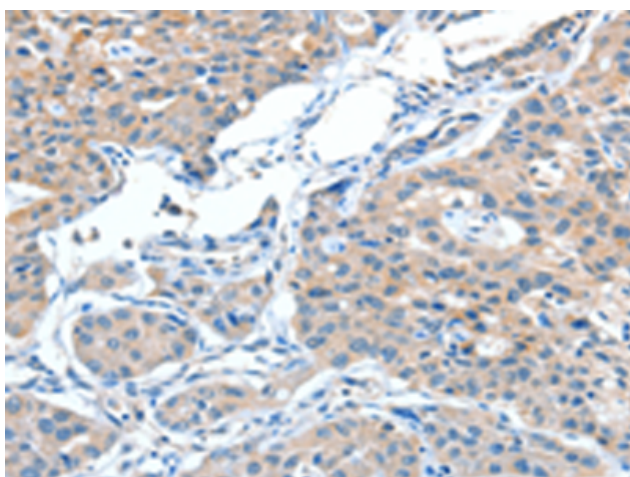
Purification: Antigen affinity purification

Species Reactivity: Human, Mouse

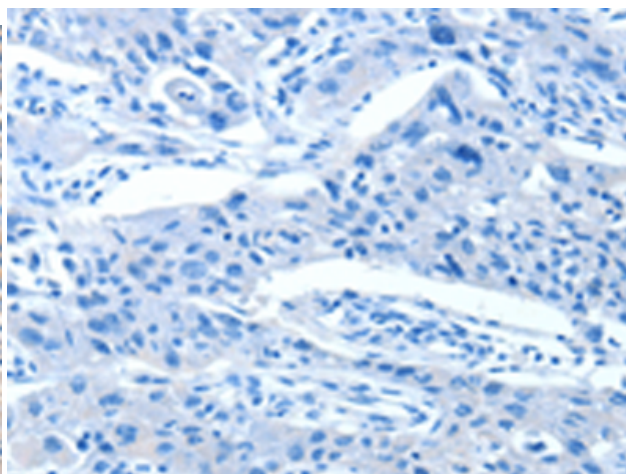
Constituents: PBS (without Mg²⁺ and Ca²⁺), pH 7.4, 150 mM NaCl, 0.05% Sodium Azide and 40% glycerol

Research Areas: Signal Transduction

Storage & Shipping: Store at -20°C. Avoid repeated freezing and thawing



Immunohistochemistry analysis of paraffin embedded Human lung cancer tissue using 216941(ADAMTSL1 Antibody) at a dilution of 1/15(Cytoplasm).



In comparison with the IHC on the left, the same paraffin-embedded Human lung cancer tissue is first treated with the fusion protein and then with 216941(Anti-ADAMTSL1 Antibody) at dilution 1/15.