

ADAMTS6 RABBIT PAB

Cat.#: S220032

Product Name: Anti-ADAMTS6 Rabbit Polyclonal Antibody

Synonyms: ADAM-TS6; ADAMTS-6; ADAM-TS 6

UNIPROT ID: Q9UKP5 (Gene Accession - NP_922932)

Background: This gene encodes a member of the ADAMTS (a disintegrin and metalloproteinase with thrombospondin motifs) protein family. Members of the family share several distinct protein modules, including a propeptide region, a metalloproteinase domain, a disintegrin-like domain, and a thrombospondin type 1 (TS) motif. Individual members of this family differ in the number of C-terminal TS motifs, and some have unique C-terminal domains.

Immunogen: Synthetic peptide of human ADAMTS6

Applications: ELISA, IHC

Recommended Dilutions: IHC: 15-50; ELISA: 1000-5000

Host Species: Rabbit

Clonality: Rabbit Polyclonal

Isotype: Immunogen-specific rabbit IgG

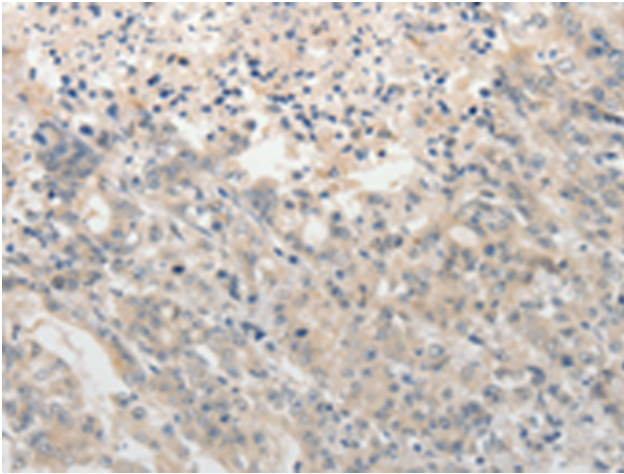
Purification: Antigen affinity purification

Species Reactivity: Human

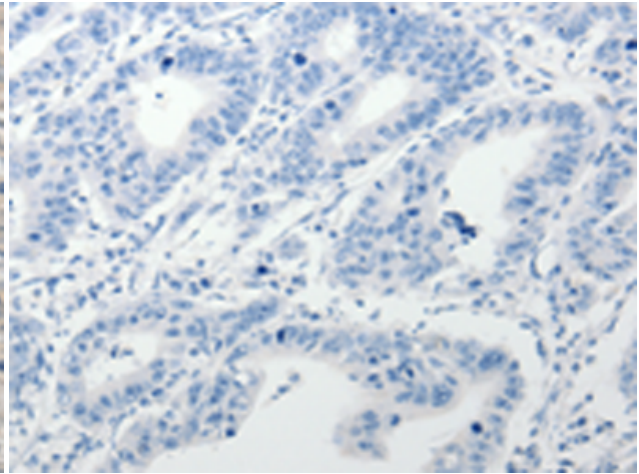
Constituents: PBS (without Mg²⁺ and Ca²⁺), pH 7.4, 150 mM NaCl, 0.05% Sodium Azide and 40% glycerol

Research Areas: Signal Transduction, Cell Biology

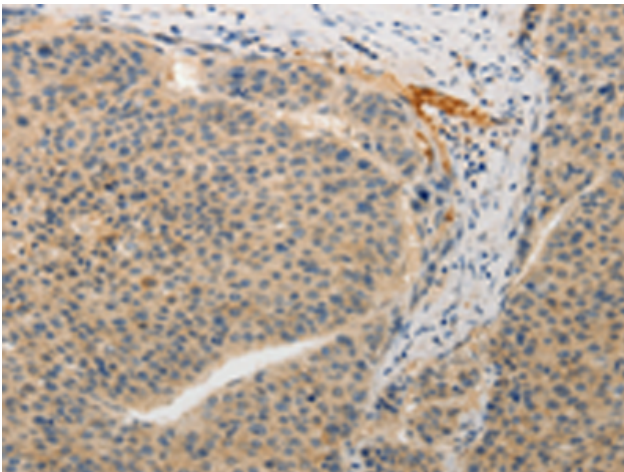
Storage & Shipping: Store at -20°C. Avoid repeated freezing and thawing



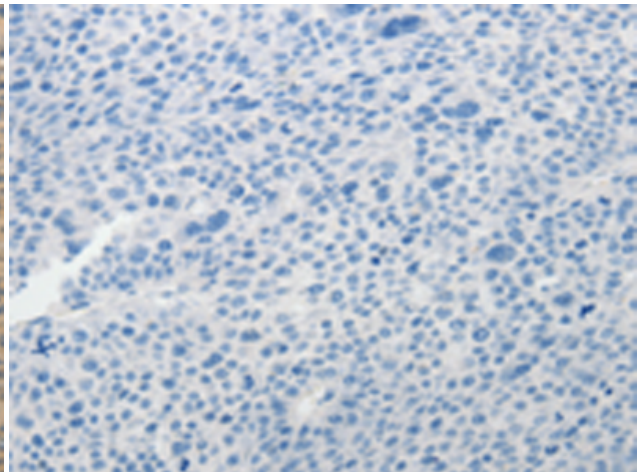
Immunohistochemistry analysis of paraffin embedded Human gastric cancer tissue using 220032(ADAMTS6 Antibody) at a dilution of 1/15(Secreted, ExtraCellular space, ExtraCellular matrix).



In comparison with the IHC on the left, the same paraffin-embedded Human gastric cancer tissue is first treated with the synthetic peptide and then with 220032(Anti-ADAMTS6 Antibody) at dilution 1/15.



The image on the left is immunohistochemistry of paraffin-embedded Human liver cancer tissue using 220032(Anti-ADAMTS6 Antibody) at a dilution of 1/15.



In comparison with the IHC on the left, the same paraffin-embedded Human liver cancer tissue is first treated with synthetic peptide and then with D260826(Anti-ADAMTS6 Antibody) at dilution 1/15.