

## ADAMTS3 RABBIT PAB

**Cat.#:** S221303

**Product Name:** Anti-ADAMTS3 Rabbit Polyclonal Antibody

**Synonyms:** HKLLS3; ADAMTS-4

**UNIPROT ID:** O15072 (Gene Accession - NP\_055058 )

**Background:** This gene encodes a member of the ADAMTS (a disintegrin and metalloproteinase with thrombospondin motifs) protein family. Members of the family share several distinct protein modules, including a propeptide region, a metalloproteinase domain, a disintegrin-like domain, and a thrombospondin type 1 (TS) motif. Individual members of this family differ in the number of C-terminal TS motifs, and some have unique C-terminal domains. The encoded preproprotein is proteolytically processed to generate the mature protease. This protease, a member of the procollagen aminopropeptidase subfamily of proteins, may play a role in the processing of type II fibrillar collagen in articular cartilage. [provided by RefSeq, Feb 2016]

**Immunogen:** Synthetic peptide of human ADAMTS3

**Applications:** ELISA, IHC

**Recommended Dilutions:** IHC: 50-100; ELISA: 5000-10000

**Host Species:** Rabbit

**Clonality:** Rabbit Polyclonal

**Isotype:** Immunogen-specific rabbit IgG

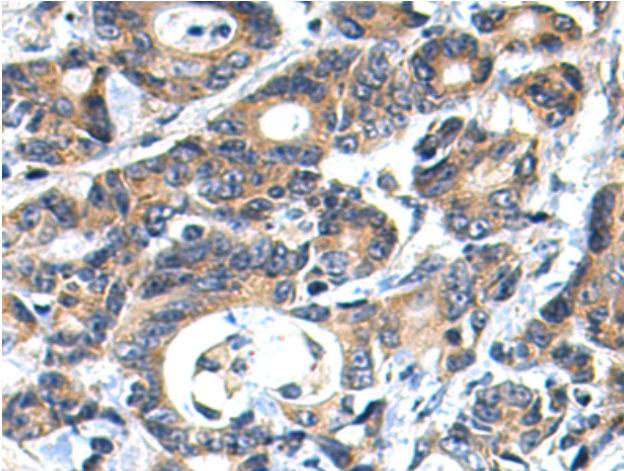
**Purification:** Antigen affinity purification

**Species Reactivity:** Human

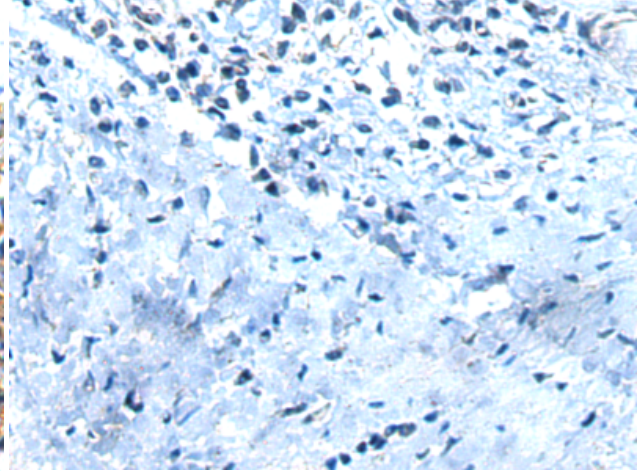
**Constituents:** PBS (without Mg<sup>2+</sup> and Ca<sup>2+</sup>), pH 7.4, 150 mM NaCl, 0.05% Sodium Azide and 40% glycerol

**Research Areas:** Signal Transduction

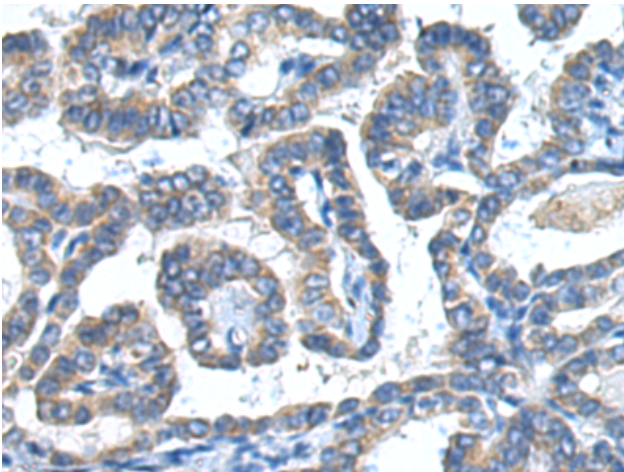
**Storage & Shipping:** Store at -20°C. Avoid repeated freezing and thawing



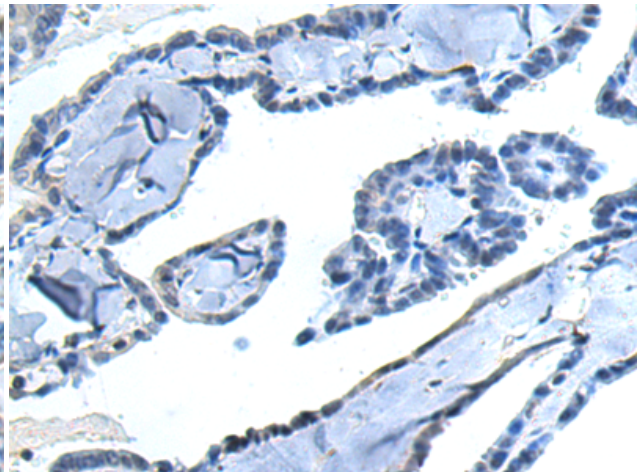
Immunohistochemistry analysis of paraffin embedded Human colorectal cancer tissue using 221303(ADAMTS3 Antibody) at a dilution of 1/55(Secreted).



In comparison with the IHC on the left, the same paraffin-embedded Human colorectal cancer tissue is first treated with the synthetic peptide and then with 221303(Anti-ADAMTS3 Antibody) at dilution 1/55.



The image on the left is immunohistochemistry of paraffin-embedded Human thyroid cancer tissue using 221303(Anti-ADAMTS3 Antibody) at a dilution of 1/55.



In comparison with the IHC on the left, the same paraffin-embedded Human thyroid cancer tissue is first treated with synthetic peptide and then with D262832(Anti-ADAMTS3 Antibody) at dilution 1/55.