

ADAMTS15 RABBIT PAB

Cat.#: S214043

Product Name: Anti-ADAMTS15 Rabbit Polyclonal Antibody

Synonyms:

UNIPROT ID: Q8TE58 (Gene Accession - NP_620686)

Background: This gene encodes a member of the ADAMTS (a disintegrin and metalloproteinase with thrombospondin motifs) protein family. ADAMTS family members share several distinct protein modules, including a propeptide region, a metalloproteinase domain, a disintegrin-like domain, and a thrombospondin type 1 (TS) motif. Individual members of this family differ in the number of C-terminal TS motifs, and some have unique C-terminal domains. The encoded preproprotein is proteolytically processed to generate the mature enzyme, which may play a role in versican processing during skeletal muscle development. This gene may function as a tumor suppressor in colorectal and breast cancers.

Immunogen: Synthetic peptide of human ADAMTS15

Applications: ELISA, WB, IHC

Recommended Dilutions: IHC: 50-200;WB: 500-2000;ELISA: 5000-10000

Host Species: Rabbit

Clonality: Rabbit Polyclonal

Isotype: Immunogen-specific rabbit IgG

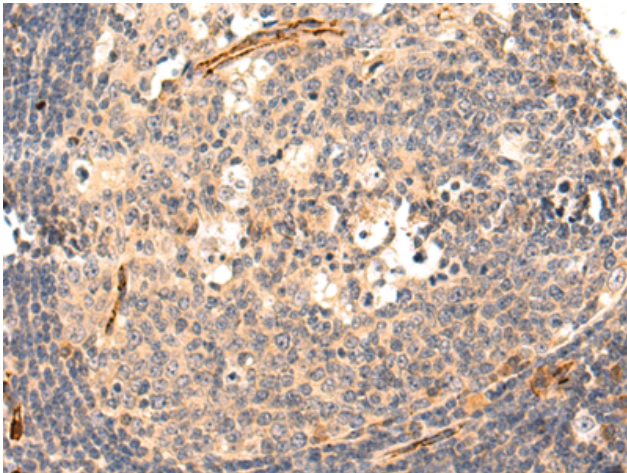
Purification: Antigen affinity purification

Species Reactivity: Human, Mouse

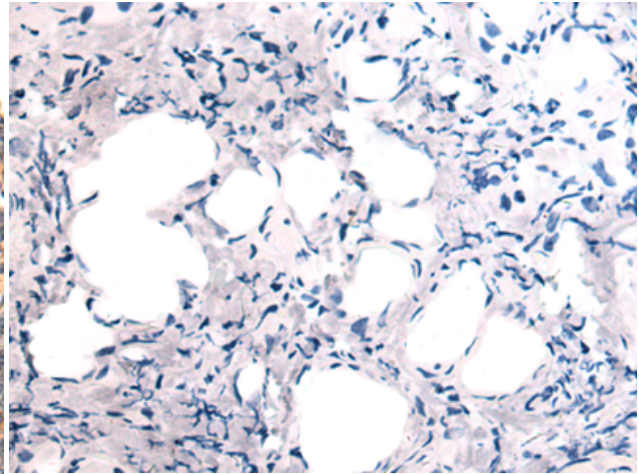
Constituents: PBS (without Mg²⁺ and Ca²⁺), pH 7.4, 150 mM NaCl, 0.05% Sodium Azide and 40% glycerol

Research Areas: Signal Transduction

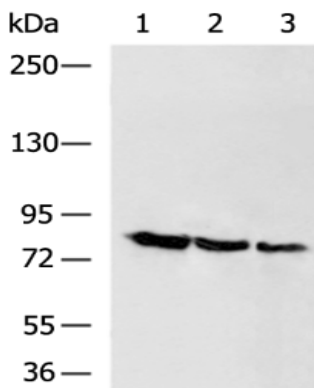
Storage & Shipping: Store at -20°C. Avoid repeated freezing and thawing



Immunohistochemistry analysis of paraffin embedded Human thyroid cancer tissue using 214043(ADAMTS15 Antibody) at a dilution of 1/50(Cytoplasm).



In comparison with the IHC on the left, the same paraffin-embedded Human thyroid cancer tissue is first treated with the synthetic peptide and then with 214043(Anti-ADAMTS15 Antibody) at dilution 1/50.



Gel: 6%SDS-PAGE, Lysate: 40 μ g;
Lane 1-3: 293T, MCF-7, PC-3 cell lysates;
Primary antibody: 214043(ADAMTS15 Antibody)
at dilution 1/400;
Secondary antibody: HRP-conjugated Goat
anti rabbit IgG at 1/5000 dilution;
Exposure time: 5 minutes