

ADAM30 RABBIT PAB

Cat.#: S216937

Product Name: Anti-ADAM30 Rabbit Polyclonal Antibody

Synonyms: svph4

UNIPROT ID: Q9UKF2 (Gene Accession - BC028372)

Background: This gene encodes a member of the ADAM (a disintegrin and metalloprotease domain) family. Members of this family are membrane-anchored proteins structurally related to snake venom disintegrins, and have been implicated in a variety of biological processes involving cell-cell and cell-matrix interactions, including fertilization, muscle development, and neurogenesis. This gene is testis-specific and contains a polymorphic region, resulting in isoforms with varying numbers of C-terminal repeats.

Immunogen: Fusion protein of human ADAM30

Applications: ELISA, IHC

Recommended Dilutions: IHC: 100-200; ELISA: 5000-10000

Host Species: Rabbit

Clonality: Rabbit Polyclonal

Isotype: Immunogen-specific rabbit IgG

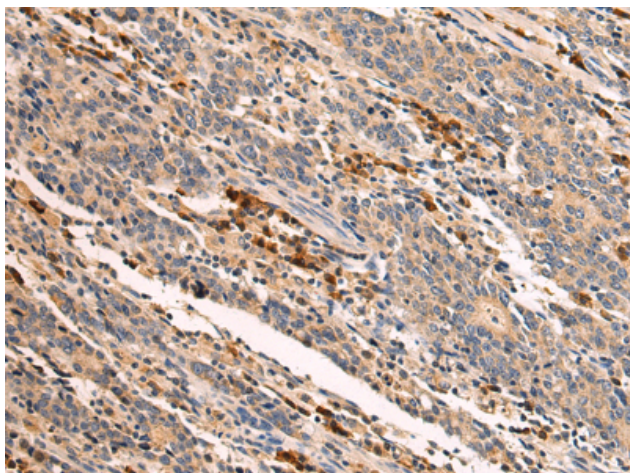
Purification: Antigen affinity purification

Species Reactivity: Human

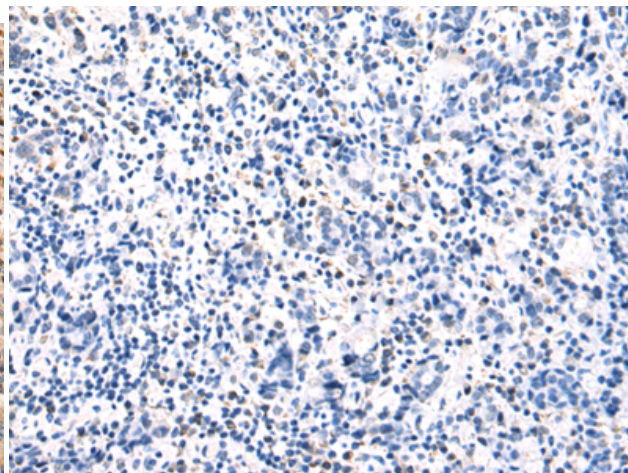
Constituents: PBS (without Mg²⁺ and Ca²⁺), pH 7.4, 150 mM NaCl, 0.05% Sodium Azide and 40% glycerol

Research Areas: Signal Transduction

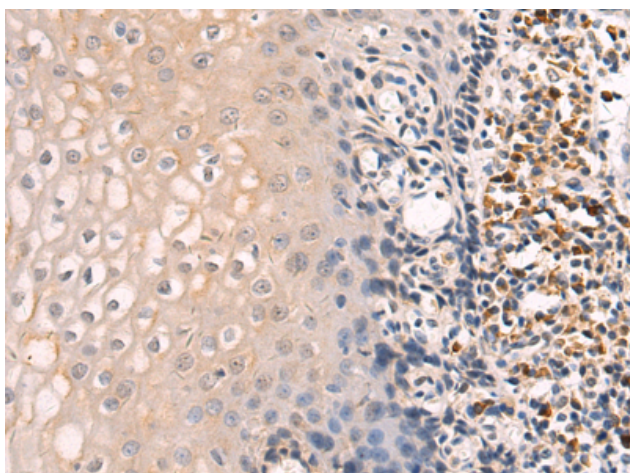
Storage & Shipping: Store at -20°C. Avoid repeated freezing and thawing



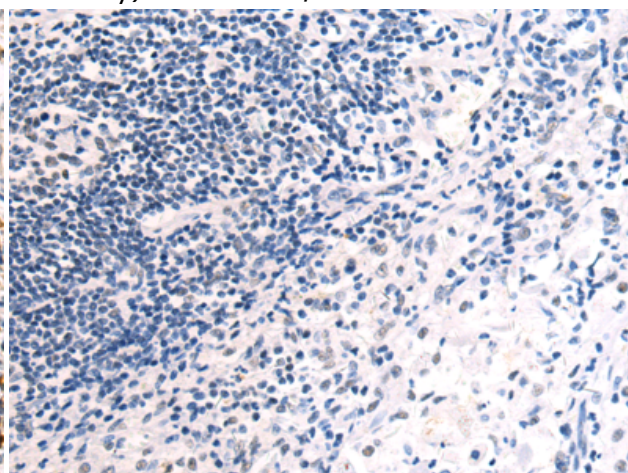
Immunohistochemistry analysis of paraffin embedded Human gastric cancer tissue using 216937(ADAM30 Antibody) at a dilution of 1/100(Cytoplasm).



In comparison with the IHC on the left, the same paraffin-embedded Human gastric cancer tissue is first treated with the fusion protein and then with 216937(Anti-ADAM30 Antibody) at dilution 1/100.



The image on the left is immunohistochemistry of paraffin-embedded Human esophagus cancer tissue using 216937(Anti-ADAM30 Antibody) at a dilution of 1/100.



In comparison with the IHC on the left, the same paraffin-embedded Human esophagus cancer tissue is first treated with fusion protein and then with D221500(Anti-ADAM30 Antibody) at dilution 1/100.