

ADAM21 RABBIT PAB

Cat.#: S210725

Product Name: Anti-ADAM21 Rabbit Polyclonal Antibody

Synonyms: ADAM31; ADAM 21

UNIPROT ID: Q9UKJ8 (Gene Accession - BC109024)

Background: This gene encodes a member of the ADAM (a disintegrin and metalloprotease domain) family. Members of this family are membrane-anchored proteins structurally related to snake venom disintegrins, and have been implicated in a variety of biological processes involving cell-cell and cell-matrix interactions, including fertilization, muscle development, and neurogenesis. The expression of this gene expression is testis-specific.

Immunogen: Fusion protein of human ADAM21

Applications: ELISA, IHC

Recommended Dilutions: IHC: 15-50; ELISA: 1000-2000

Host Species: Rabbit

Clonality: Rabbit Polyclonal

Isotype: Immunogen-specific rabbit IgG

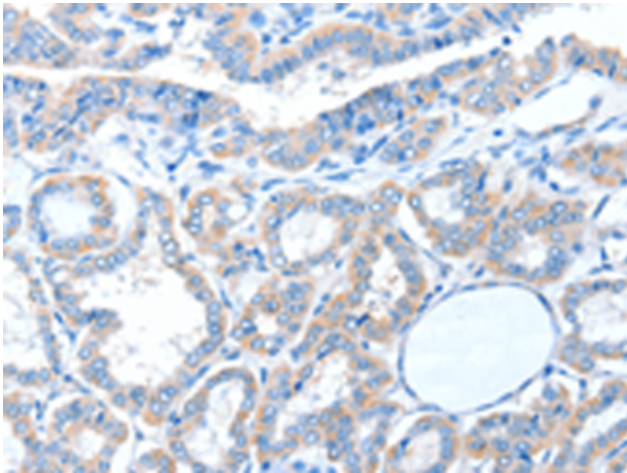
Purification: Antigen affinity purification

Species Reactivity: Human

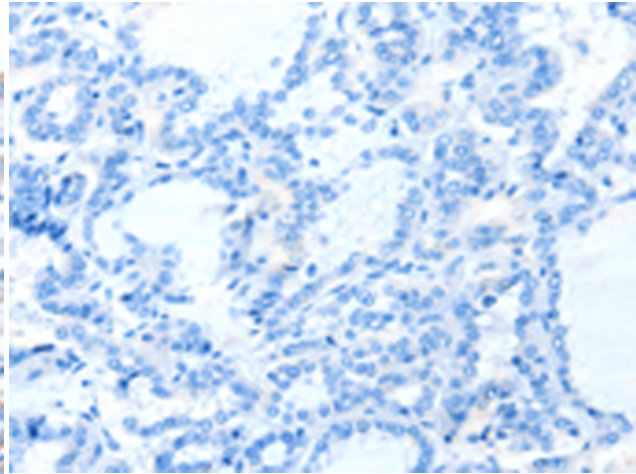
Constituents: PBS (without Mg²⁺ and Ca²⁺), pH 7.4, 150 mM NaCl, 0.05% Sodium Azide and 40% glycerol

Research Areas: Signal Transduction

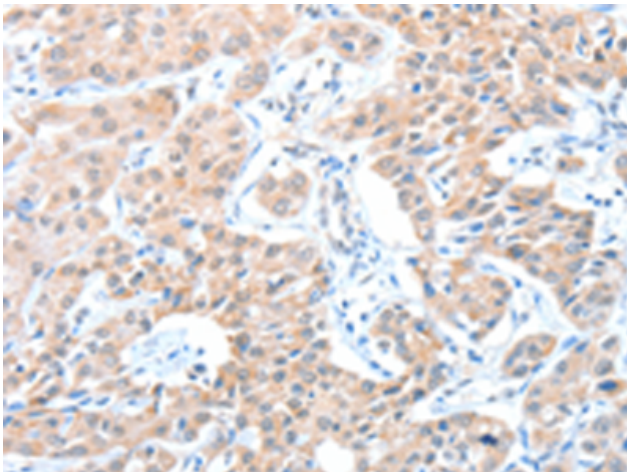
Storage & Shipping: Store at -20°C. Avoid repeated freezing and thawing



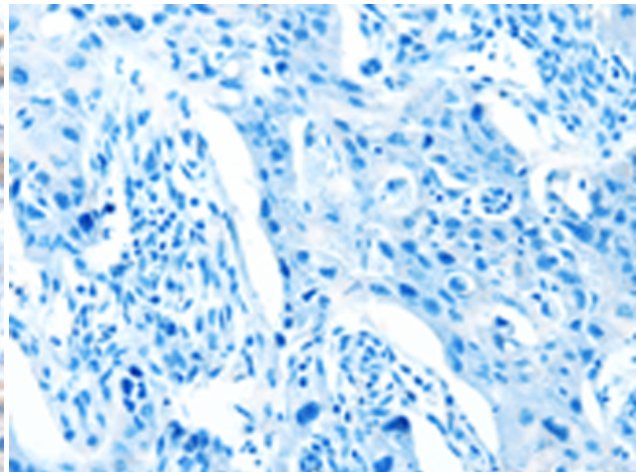
Immunohistochemistry analysis of paraffin embedded Human thyroid cancer tissue using 210725(ADAM21 Antibody) at a dilution of 1/15(Cytoplasm).



In comparison with the IHC on the left, the same paraffin-embedded Human thyroid cancer tissue is first treated with the fusion protein and then with 210725(Anti-ADAM21 Antibody) at dilution 1/15.



The image on the left is immunohistochemistry of paraffin-embedded Human lung cancer tissue using 210725(Anti-ADAM21 Antibody) at a dilution of 1/15.



In comparison with the IHC on the left, the same paraffin-embedded Human lung cancer tissue is first treated with fusion protein and then with D121508(Anti-ADAM21 Antibody) at dilution 1/15.