

ADAM15 RABBIT PAB

Cat.#: S216938

Product Name: Anti-ADAM15 Rabbit Polyclonal Antibody

Synonyms: MDC15

UNIPROT ID: Q13444 (Gene Accession - BC014566)

Background: The protein encoded by this gene is a member of the ADAM (a disintegrin and metalloproteinase) protein family. ADAM family members are type I transmembrane glycoproteins known to be involved in cell adhesion and proteolytic ectodomain processing of cytokines and adhesion molecules. This protein contains multiple functional domains including a zinc-binding metalloprotease domain, a disintegrin-like domain, as well as an EGF-like domain. Through its disintegrin-like domain, this protein specifically interacts with the integrin beta chain, beta 3. It also interacts with Src family protein-tyrosine kinases in a phosphorylation-dependent manner, suggesting that this protein may function in cell-cell adhesion as well as in cellular signaling. Multiple alternatively spliced transcript variants encoding distinct isoforms have been observed.

Immunogen: Fusion protein of human ADAM15

Applications: ELISA, WB, IHC

Recommended Dilutions: IHC: 50-200;WB: 500-2000;ELISA: 5000-10000

Host Species: Rabbit

Clonality: Rabbit Polyclonal

Isotype: Immunogen-specific rabbit IgG

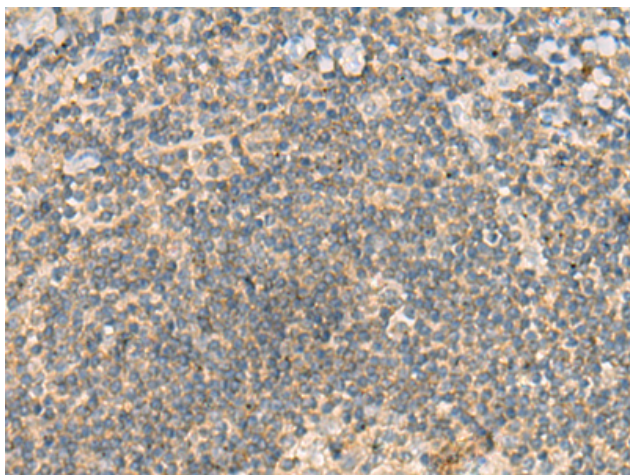
Purification: Antigen affinity purification

Species Reactivity: Human, Mouse, Rat

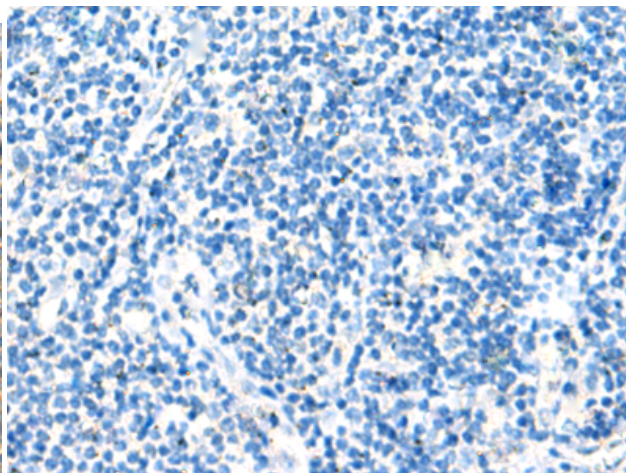
Constituents: PBS (without Mg²⁺ and Ca²⁺), pH 7.4, 150 mM NaCl, 0.05% Sodium Azide and 40% glycerol

Research Areas: Signal Transduction, Cell Biology

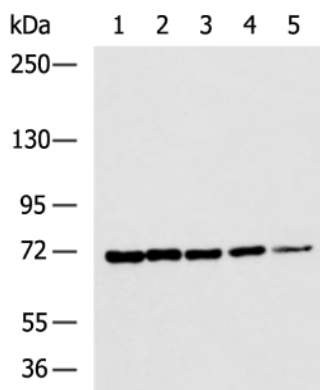
Storage & Shipping: Store at -20°C. Avoid repeated freezing and thawing



Immunohistochemistry analysis of paraffin embedded Human tonsil tissue using 216938(ADAM15 Antibody) at a dilution of 1/70(Cytoplasm).



In comparison with the IHC on the left, the same paraffin-embedded Human tonsil tissue is first treated with the fusion protein and then with 216938(Anti-ADAM15 Antibody) at dilution 1/70.



Gel: 6%SDS-PAGE, Lysate: 40 μ g;
 Lane 1-5: NIH/3T3, HepG2, PC-3, Jurkat cell,
 Mouse heart tissue lysates;
 Primary antibody: 216938(ADAM15 Antibody)
 at dilution 1/800;
 Secondary antibody: HRP-conjugated Goat
 anti rabbit IgG at 1/5000 dilution;
 Exposure time: 5 minutes