

ACTR3 RABBIT PAB

Cat.#: S222433

Product Name: Anti-ACTR3 Rabbit Polyclonal Antibody

Synonyms: ARP3

UNIPROT ID: P61158 (Gene Accession - NP_005712)

Background: The specific function of this gene has not yet been determined; however, the protein it encodes is known to be a major constituent of the ARP2/3 complex. This complex is located at the cell surface and is essential to cell shape and motility through lamellipodial actin assembly and protrusion. Three transcript variants encoding two different isoforms have been found for this gene.

Immunogen: Synthetic peptide of human ACTR3

Applications: ELISA, WB, IHC

Recommended Dilutions: IHC: 50-200;WB: 1000-5000;ELISA: 5000-10000

Host Species: Rabbit

Clonality: Rabbit Polyclonal

Isotype: Immunogen-specific rabbit IgG

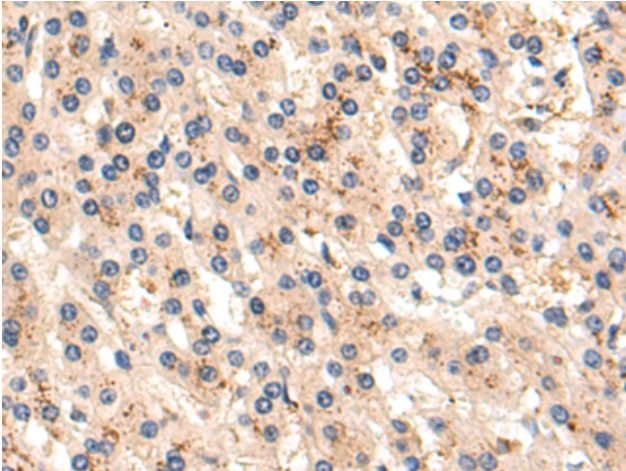
Purification: Antigen affinity purification

Species Reactivity: Human, Mouse, Rat

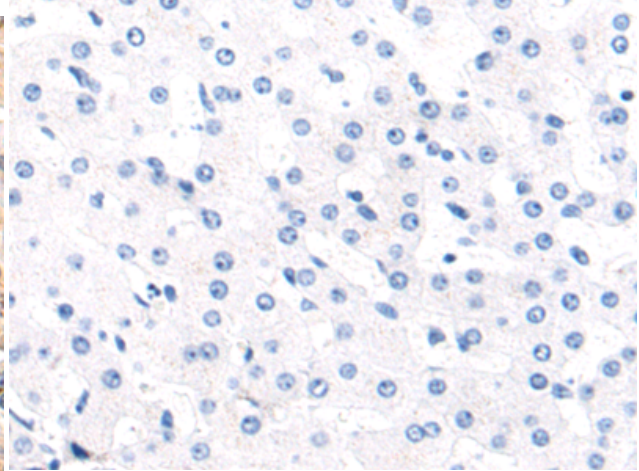
Constituents: PBS (without Mg²⁺ and Ca²⁺), pH 7.4, 150 mM NaCl, 0.05% Sodium Azide and 40% glycerol

Research Areas: Immunology

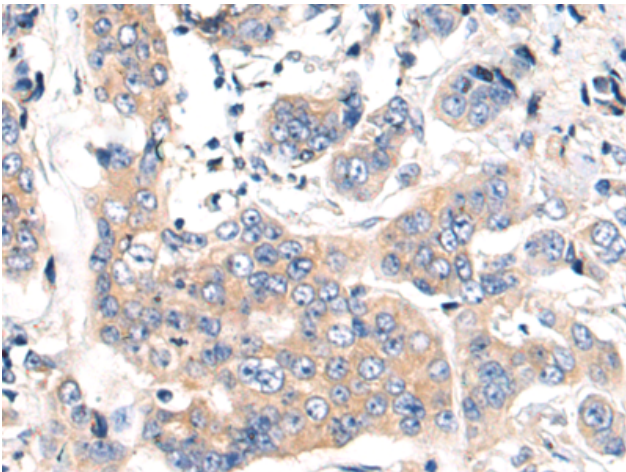
Storage & Shipping: Store at -20°C. Avoid repeated freezing and thawing



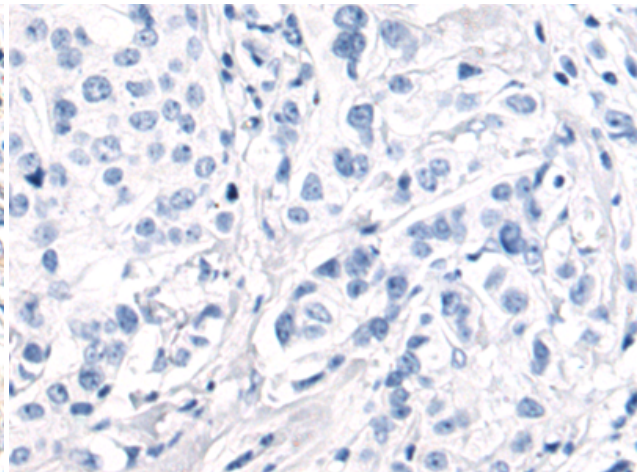
Immunohistochemistry analysis of paraffin embedded Human liver cancer tissue using 222433(ACTR3 Antibody) at a dilution of 1/85(Cytoplasm).



In comparison with the IHC on the left, the same paraffin-embedded Human liver cancer tissue is first treated with the synthetic peptide and then with 222433(Anti-ACTR3 Antibody) at dilution 1/85.



The image on the left is immunohistochemistry of paraffin-embedded Human breast cancer tissue using 222433(Anti-ACTR3 Antibody) at a dilution of 1/85.



In comparison with the IHC on the left, the same paraffin-embedded Human breast cancer tissue is first treated with synthetic peptide and then with D264602(Anti-ACTR3 Antibody) at dilution 1/85.



Gel: 8%SDS-PAGE, Lysate: 40 μ g;
Lane 1-4: Jurkat, A549, K562, Hela cell lysates;
Primary antibody: 222433(ACTR3 Antibody) at dilution 1/1500;
Secondary antibody: HRP-conjugated Goat anti rabbit IgG at 1/5000 dilution;
Exposure time: 2 seconds