

## ACTR1B RABBIT MAB

**Cat.#:** N263210

**Product Name:** Anti-ACTR1B Rabbit Monoclonal Antibody

**Synonyms:** PC3; ARPIB; CTRN2

**UNIPROT ID:** P42025

**Background:** Component of a multi-subunit complex involved in microtubule based vesicle motility.

**Immunogen:** A synthetic peptide of human ACTR1B

**Applications:** WB,IHC-F,IHC-P,ICC/IF,IP

**Recommended Dilutions:** WB: 1/500-1/1000 IHC: 1/50-1/100 IF: 1/50-1/200 IP: 1/20

**Host Species:** Rabbit

**Clonality:** Rabbit Monoclonal

**Clone ID:** R05-1E3

**MW:** Calculated MW: 42 kDa; Observed MW: 42 kDa

**Isotype:** IgG

**Purification:** Affinity Purified

**Species Reactivity:** Human

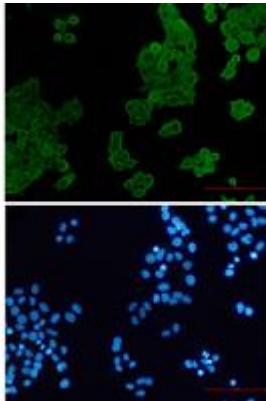
**Conjugation:** Unconjugated

**Modification:** Unmodified

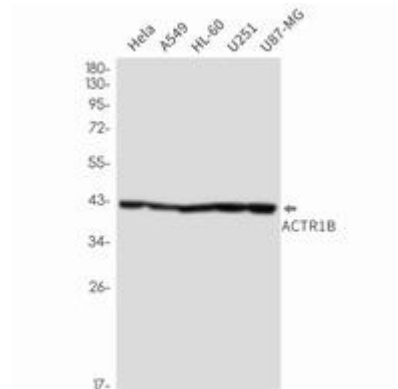
**Constituents:** PBS (without Mg<sup>2+</sup> and Ca<sup>2+</sup>), pH 7.3 containing 50% glycerol, 0.5% BSA and 0.02% sodium azide

**Research Areas:** Signal Transduction

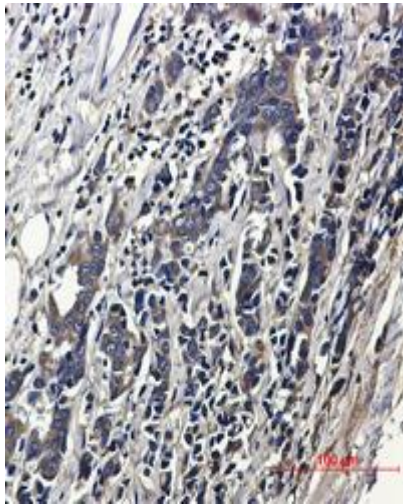
**Storage & Shipping:** Store at -20°C. Avoid repeated freezing and thawing



Immunocytochemistry analysis of ACTR1B (green) in HeLa using ACTR1B antibody, and DAPI (blue)



Western blot analysis of ACTR1B in HeLa, A549, HL-60, U251, U87-MG lysates using ACTR1B antibody.



Immunohistochemistry analysis of paraffin-embedded human breast cancer using ACTR1B antibody. High-pressure and temperature Sodium Citrate pH 6.0 was used for antigen retrieval.