

ACTC1 RABBIT PAB

Cat.#: N225013

Product Name: Anti-ACTC1 Rabbit pAb

Synonyms: ACTC1; ACTC; Actin; alpha cardiac muscle 1; Alpha-cardiac actin; ACTA1; ACTA; Actin; alpha skeletal muscle; Alpha-actin-1; ACTA2; ACTSA; ACTVS; GIG46

UNIPROT ID: P68032

Background: Actins are highly conserved proteins that are involved in various types of cell motility and are ubiquitously expressed in all eukaryotic cells.

Immunogen: Synthesized peptide derived from the Internal region of human α -SMA.

Applications: WB,IHC-P,ELISA

Recommended Dilutions: WB: 1/500-1/1000 IHC: 1/50-1/100 ELISA: 1/10000

Host Species: Rabbit

Clonality: Rabbit Polyclonal

Clone ID: -

MW: Calculated MW: 42 kDa; Observed MW: 42 kDa

Isotype: IgG

Purification: Affinity Purified

Species Reactivity: Human,Mouse,Rat

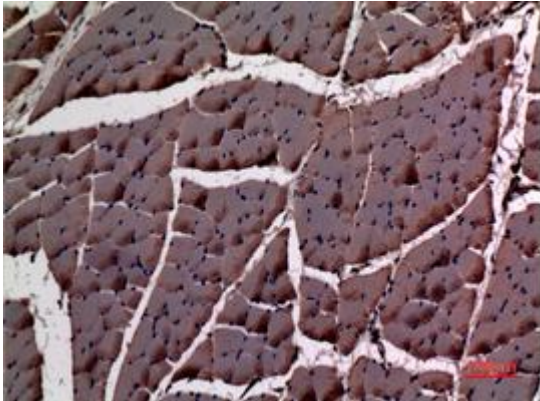
Conjugation: Unconjugated

Modification: Unmodified

Constituents: PBS (without Mg²⁺ and Ca²⁺), pH 7.3 containing 50% glycerol, 0.5% BSA and 0.02% sodium azide

Research Areas: Signal Transduction

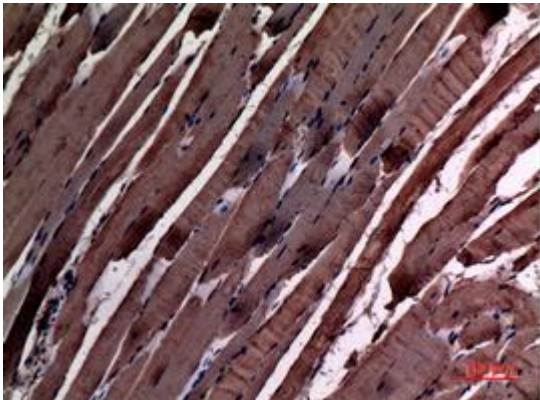
Storage & Shipping: Store at -20°C. Avoid repeated freezing and thawing



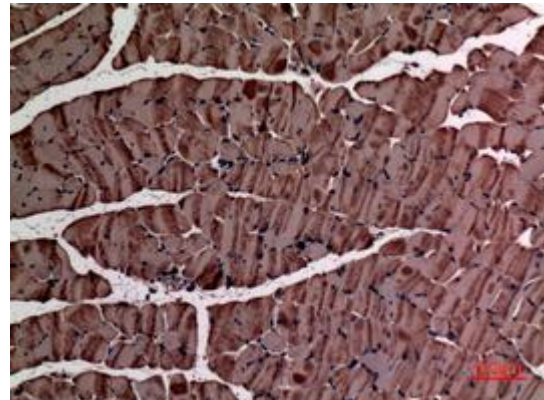
Immunohistochemistry analysis of paraffin-embedded rat muscle using ACTC1 antibody. High-pressure and temperature Sodium Citrate pH 6.0 was used for antigen retrieval.



Western blot analysis of ACTC1 in Sodium MFC lysates using ACTC1 antibody.



Immunohistochemistry analysis of paraffin-embedded rat muscle using ACTC1 antibody. High-pressure and temperature Sodium Citrate pH 6.0 was used for antigen retrieval.



Immunohistochemistry analysis of paraffin-embedded mouse muscle using ACTC1 antibody. High-pressure and temperature Sodium Citrate pH 6.0 was used for antigen retrieval.