

ACTB RABBIT PAB

Cat.#: 22077

Product Name: Anti-ACTB Rabbit Polyclonal Antibody

Synonyms: BRWS1; PS1TP5BP1

UNIPROT ID: P60709 (Gene Accession - NP_001092)

Background: This gene encodes one of six different actin proteins. Actins are highly conserved proteins that are involved in cell motility, structure, and integrity. This actin is a major constituent of the contractile apparatus and one of the two nonmuscle cytoskeletal actins.

Immunogen: Synthetic peptide of human ACTB

Applications: ELISA, WB, IHC

Recommended Dilutions: IHC: 50-100;WB: 1000-5000;ELISA: 5000-10000

Host Species: Rabbit

Clonality: Rabbit Polyclonal

Isotype: Immunogen-specific rabbit IgG

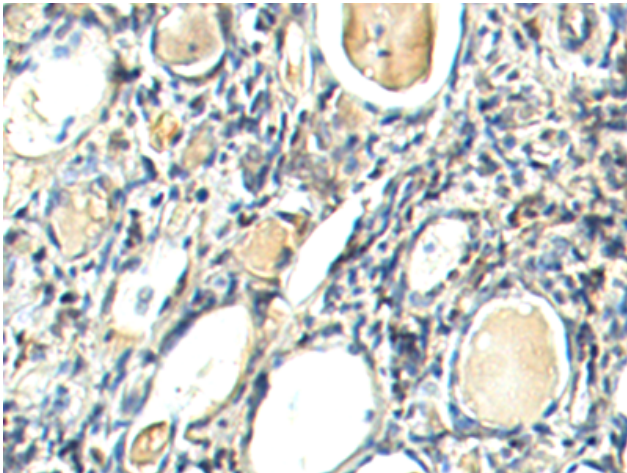
Purification: Antigen affinity purification

Species Reactivity: Human, Mouse, Rat

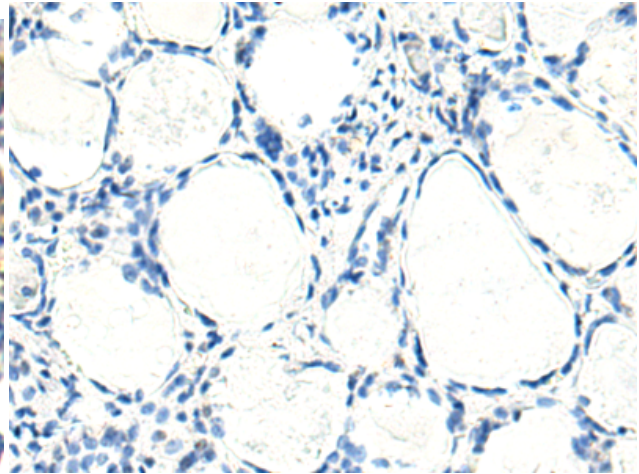
Constituents: PBS (without Mg²⁺ and Ca²⁺), pH 7.4, 150 mM NaCl, 0.05% Sodium Azide and 40% glycerol

Research Areas: Isotype/Loading Controls, Tags & Cell Markers, Signal Transduction

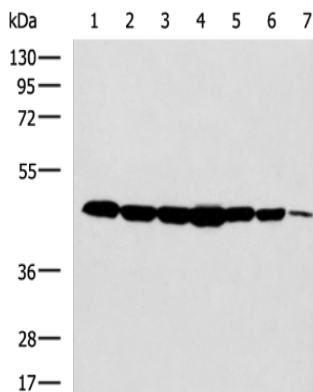
Storage & Shipping: Store at -20°C. Avoid repeated freezing and thawing



Immunohistochemistry analysis of paraffin embedded Human thyroid cancer tissue using 210012(Anti-ACTB Antibody) at a dilution of 1/40(Cytoplasm).



In comparison with the IHC on the left, the same paraffin-embedded Human thyroid cancer tissue is first treated with the synthetic peptide and then with 210012(Anti-ACTB Antibody) at dilution 1/40.



Gel: 8%SDS-PAGE, Lysate: 40 µg;
 Lane 1-7: NIH/3T3 cell, Jurkat cell, 231 cell, LOVO cell, Mouse kidney tissue, HepG2 cell, HT29 cell lysates;
 Primary antibody: 210012(ACTB Antibody) at dilution 1/2000;
 Secondary antibody: HRP-conjugated Goat anti rabbit IgG at 1/5000 dilution;
 Exposure time: 1 minute