

ACSBG1 RABBIT PAB

Cat.#: S216920

Product Name: Anti-ACSBG1 Rabbit Polyclonal Antibody

Synonyms: BG; BG1; BGM; LPD; GR-LACS

UNIPROT ID: Q96GR2 (Gene Accession - BC009289)

Background: The protein encoded by this gene possesses long-chain acyl-CoA synthetase activity. It is thought to play a central role in brain very long-chain fatty acids metabolism and myelinogenesis.

Immunogen: Fusion protein of human ACSBG1

Applications: ELISA, IHC

Recommended Dilutions: IHC: 50-100; ELISA: 2000-5000

Host Species: Rabbit

Clonality: Rabbit Polyclonal

Isotype: Immunogen-specific rabbit IgG

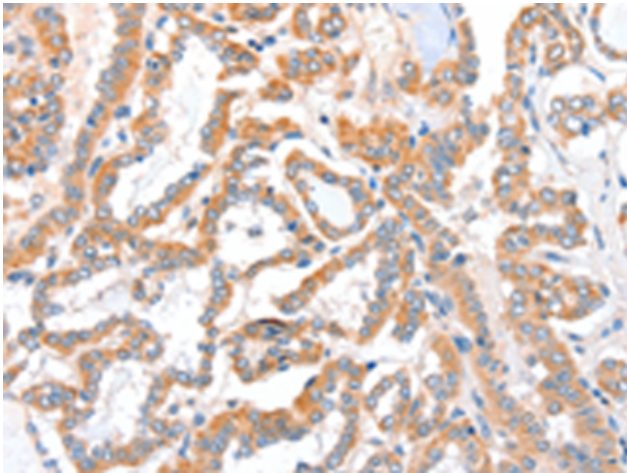
Purification: Antigen affinity purification

Species Reactivity: Human, Mouse, Rat

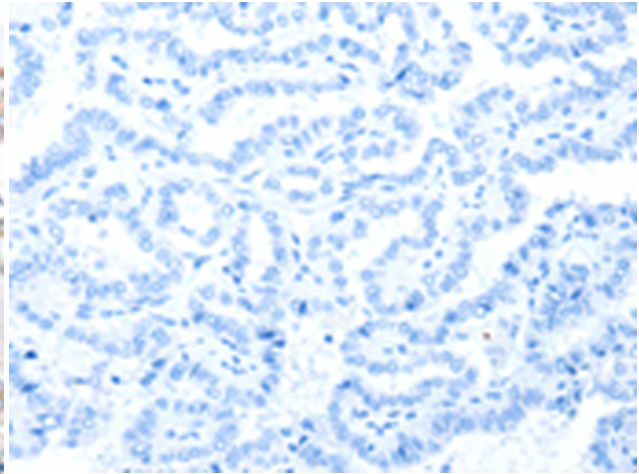
Constituents: PBS (without Mg²⁺ and Ca²⁺), pH 7.4, 150 mM NaCl, 0.05% Sodium Azide and 40% glycerol

Research Areas: Metabolism

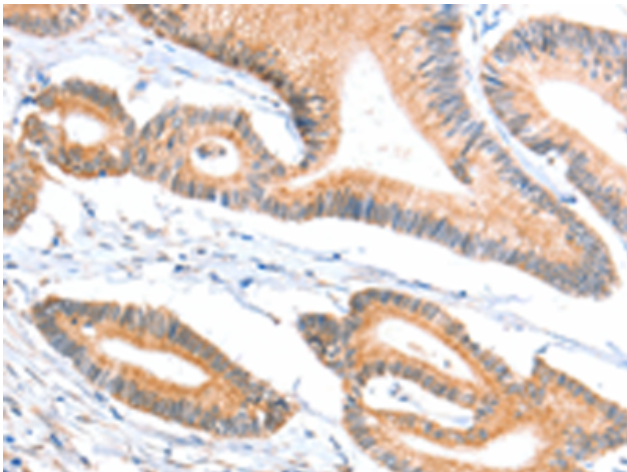
Storage & Shipping: Store at -20°C. Avoid repeated freezing and thawing



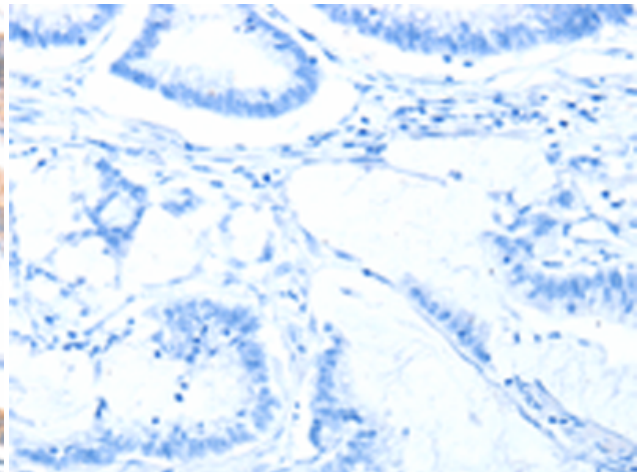
Immunohistochemistry analysis of paraffin embedded Human thyroid cancer tissue using 216920(ACSBG1 Antibody) at a dilution of 1/40(Cytoplasm).



In comparison with the IHC on the left, the same paraffin-embedded Human thyroid cancer tissue is first treated with the fusion protein and then with 216920(Anti-ACSBG1 Antibody) at dilution 1/40.



The image on the left is immunohistochemistry of paraffin-embedded Human colon cancer tissue using 216920(Anti-ACSBG1 Antibody) at a dilution of 1/40.



In comparison with the IHC on the left, the same paraffin-embedded Human colon cancer tissue is first treated with fusion protein and then with D221474(Anti-ACSBG1 Antibody) at dilution 1/40.