

## ACP5 RABBIT PAB

**Cat.#:** S222379

**Product Name:** Anti-ACP5 Rabbit Polyclonal Antibody

**Synonyms:** HPAP; TRAP; TRACP5a; TRACP5b; TrATPase

**UNIPROT ID:** P13686 (Gene Accession - NP\_001602 )

**Background:** This gene encodes an iron containing glycoprotein which catalyzes the conversion of orthophosphoric monoester to alcohol and orthophosphate. It is the most basic of the acid phosphatases and is the only form not inhibited by L(+)-tartrate.

**Immunogen:** Synthetic peptide of human ACP5

**Applications:** ELISA, IHC

**Recommended Dilutions:** IHC: 50-100; ELISA: 2000-5000

**Host Species:** Rabbit

**Clonality:** Rabbit Polyclonal

**Isotype:** Immunogen-specific rabbit IgG

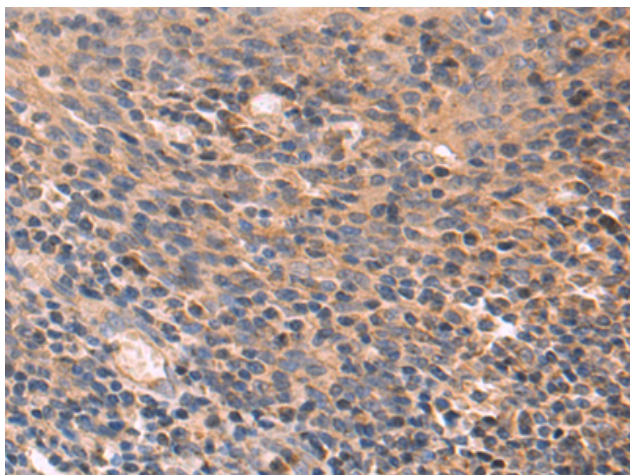
**Purification:** Antigen affinity purification

**Species Reactivity:** Human, Mouse, Rat

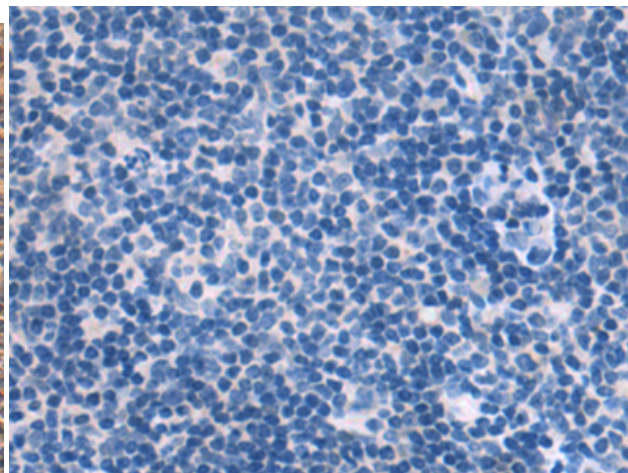
**Constituents:** PBS (without Mg<sup>2+</sup> and Ca<sup>2+</sup>), pH 7.4, 150 mM NaCl, 0.05% Sodium Azide and 40% glycerol

**Research Areas:** Immunology, Signal Transduction, Metabolism

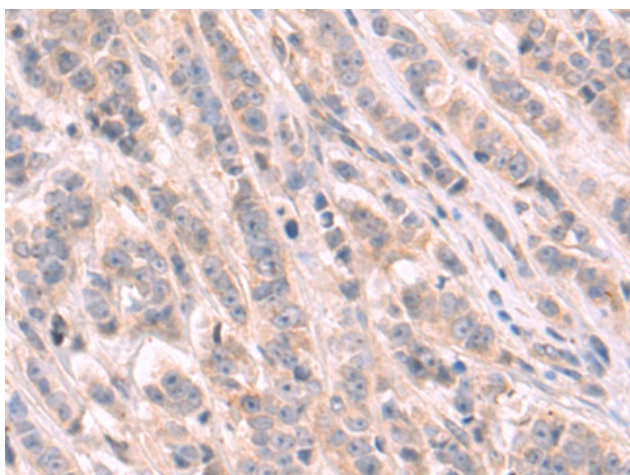
**Storage & Shipping:** Store at -20°C. Avoid repeated freezing and thawing



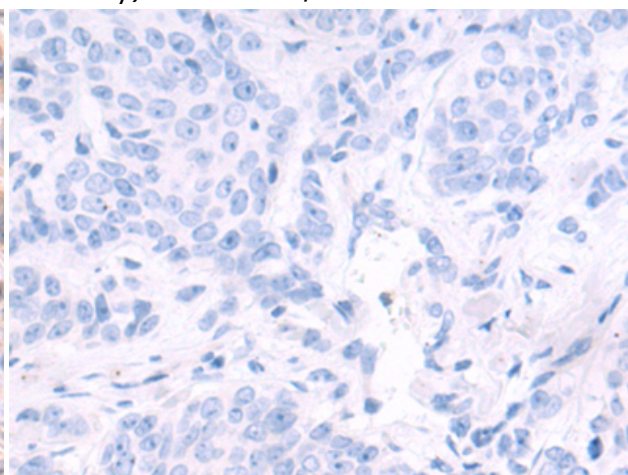
Immunohistochemistry analysis of paraffin embedded Human tonsil tissue using 222379 (ACP5 Antibody) at a dilution of 1/50 (Cytoplasm).



In comparison with the IHC on the left, the same paraffin-embedded Human tonsil tissue is first treated with the synthetic peptide and then with 222379 (Anti-ACP5 Antibody) at dilution 1/50.



The image on the left is immunohistochemistry of paraffin-embedded Human breast cancer tissue using 222379 (Anti-ACP5 Antibody) at a dilution of 1/50.



In comparison with the IHC on the left, the same paraffin-embedded Human breast cancer tissue is first treated with synthetic peptide and then with D264510 (Anti-ACP5 Antibody) at dilution 1/50.