

ACETYL-HISTONE H2B (LYS15) RABBIT PAB

Cat.#: N226085

Product Name: Anti-Acetyl-Histone H2B (Lys15) Rabbit pAb

Synonyms: H2BK15ac; H2B 1A; H2B; H2B histone family; H2B2f; H2Ba; H2Bf; HIST2H2BF; histone H2B; histone H2B type 1; Histone H2B type 2-F

UNIPROT ID: P33778

Background: Belongs to the histone H2B family. Play a central role in transcription regulation, DNA repair, DNA replication and chromosomal stability. DNA accessibility is regulated via a complex set of post-translational modifications of histones, also called histone code, and nucleosome remodeling.

Immunogen: AA synthetic acetylated peptide corresponding to residues surrounding K15 of human Histone H2B

Applications: WB,IHC-F,IHC-P,ICC/IF

Recommended Dilutions: WB: 1/500-1/1000 IHC: 1/50-1/100 IF: 1/50-1/200

Host Species: Rabbit

Clonality: Rabbit Polyclonal

Clone ID: -

MW: Calculated MW: 14 kDa; Observed MW: 14 kDa

Isotype: IgG

Purification: Affinity Purified

Species Reactivity: Human,Mouse

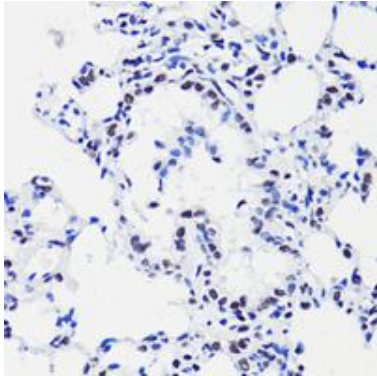
Conjugation: Unconjugated

Modification: Acetylated

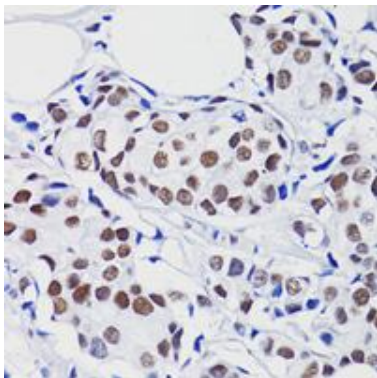
Constituents: PBS (without Mg²⁺ and Ca²⁺), pH 7.3 containing 50% glycerol, 0.5% BSA and 0.02% sodium azide

Research Areas: Epigenetics and Nuclear Signaling

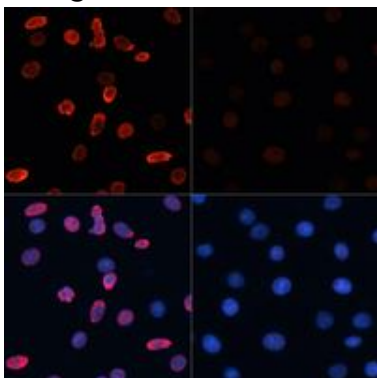
Storage & Shipping: Store at -20°C. Avoid repeated freezing and thawing



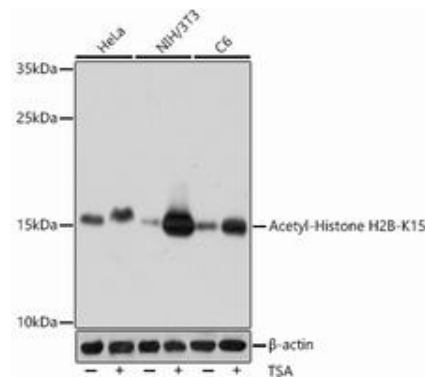
Immunohistochemistry analysis of paraffin-embedded rat lung using Acetyl-Histone H2B (Lys15) antibody. High-pressure and temperature Sodium Citrate pH 6.0 was used for antigen retrieval.



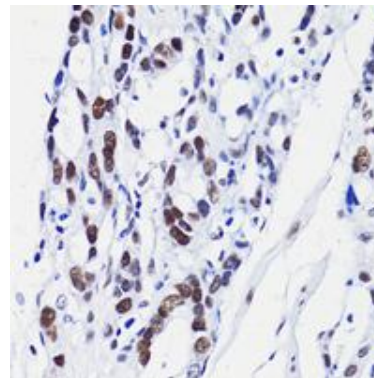
Immunohistochemistry analysis of paraffin-embedded Human breast cancer using H2B K15ac antibody. High-pressure and temperature Sodium Citrate pH 6.0 was used for antigen retrieval.



Immunofluorescence analysis of Acetyl-Histone H2B (Lys15) in C6 using Acetyl-Histone H2BK15 antibody. C6 cells were treated by TSA, and DAPI (blue).



Western blot analysis of Acetyl-Histone H2B (Lys15) in various cell lines lysates using Acetyl-Histone H2BK15 antibody.



Immunohistochemistry analysis of paraffin-embedded Human gastric cancer using H2B K15ac antibody. High-pressure and temperature Sodium Citrate pH 6.0 was used for antigen retrieval.



Product Description

Pioneering GTPase and Oncogene Product Development since 2010
