

ACAT1 RABBIT MAB

Cat.#: N261786

Product Name: Anti-ACAT1 Rabbit Monoclonal Antibody

Synonyms: T2; MAT; ACAT; THIL

UNIPROT ID: P24752

Background: Plays a major role in ketone body metabolism.

Immunogen: A synthetic peptide of human ACAT1

Applications: WB,IP

Recommended Dilutions: WB: 1/500-1/1000 IP: 1/20

Host Species: Rabbit

Clonality: Rabbit Monoclonal

Clone ID: R02-5G8

MW: Calculated MW: 45 kDa; Observed MW: 45 kDa

Isotype: IgG

Purification: Affinity Purified

Species Reactivity: Human

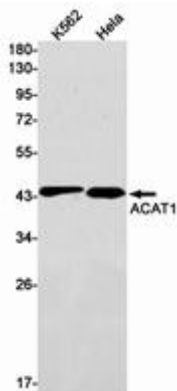
Conjugation: Unconjugated

Modification: Unmodified

Constituents: PBS (without Mg²⁺ and Ca²⁺), pH 7.3 containing 50% glycerol, 0.5% BSA and 0.02% sodium azide

Research Areas: Tags & Cell Markers

Storage & Shipping: Store at -20°C. Avoid repeated freezing and thawing



Western blot analysis of ACAT1 in K562, Hela lysates using ACAT1 antibody.