

## ABRAXAS1 RABBIT PAB

**Cat.#:** S218441

**Product Name:** Anti-ABRAXAS1 Rabbit Polyclonal Antibody

**Synonyms:** ABRA1; CCDC98; FAM175A

**UNIPROT ID:** Q6UWZ7 (Gene Accession - BC016905 )

**Background:** This gene encodes a protein that binds to the C-terminal repeats of breast cancer 1 (BRCA1) through a phospho-SXXF motif. The encoded protein recruits ubiquitin interaction motif containing 1 protein to BRCA1 protein and is required for DNA damage resistance, DNA repair, and cell cycle checkpoint control. Pseudogenes of this gene are found on chromosomes 3 and 8. Alternative splicing results in multiple transcript variants. [provided by RefSeq, Sep 2016]

**Immunogen:** Fusion protein of human ABRAXAS1

**Applications:** ELISA, IHC

**Recommended Dilutions:** IHC: 25-100; ELISA: 5000-10000

**Host Species:** Rabbit

**Clonality:** Rabbit Polyclonal

**Isotype:** Immunogen-specific rabbit IgG

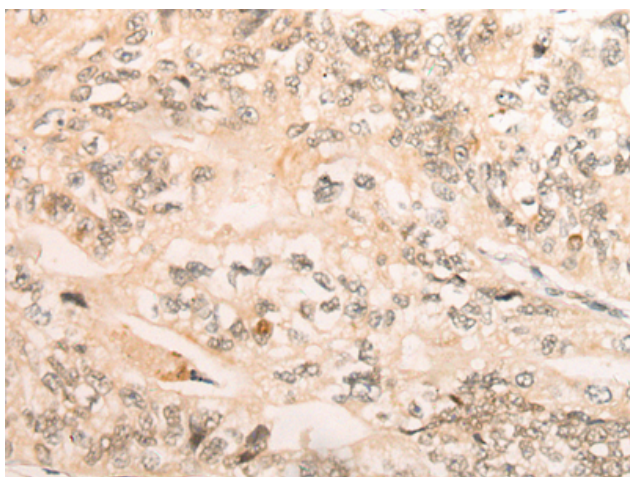
**Purification:** Antigen affinity purification

**Species Reactivity:** Human

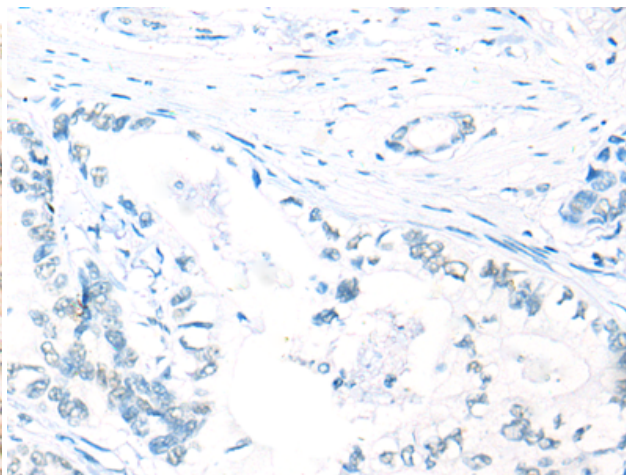
**Constituents:** PBS (without Mg<sup>2+</sup> and Ca<sup>2+</sup>), pH 7.4, 150 mM NaCl, 0.05% Sodium Azide and 40% glycerol

**Research Areas:** Epigenetics and Nuclear Signaling

**Storage & Shipping:** Store at -20°C. Avoid repeated freezing and thawing



Immunohistochemistry analysis of paraffin embedded Human gastric cancer tissue using 218441(ABRAXAS1 Antibody) at a dilution of 1/25(Nucleus).



In comparison with the IHC on the left, the same paraffin-embedded Human gastric cancer tissue is first treated with the fusion protein and then with 218441(Anti-ABRAXAS1 Antibody) at dilution 1/25.