

ABCB6 RABBIT PAB

Cat.#: S216898

Product Name: Anti-ABCB6 Rabbit Polyclonal Antibody

Synonyms: ABC; LAN; PRP; umat; MTABC3

UNIPROT ID: Q9NP58 (Gene Accession - BC000559)

Background: This gene encodes a member of the ATP-binding cassette (ABC) transporter superfamily. ABC proteins transport various molecules across extra- and intra-cellular membranes. This protein is a member of the heavy metal importer subfamily and plays a role in porphyrin transport. This gene is the molecular basis of the Langereis (Lan) blood group antigen and mutations in this gene underlie familial pseudohyperkalemia and dyschromatosis universalis hereditaria.

Immunogen: Fusion protein of human ABCB6

Applications: ELISA, WB, IHC

Recommended Dilutions: IHC: 50-200;WB: 500-2000;ELISA: 5000-10000

Host Species: Rabbit

Clonality: Rabbit Polyclonal

Isotype: Immunogen-specific rabbit IgG

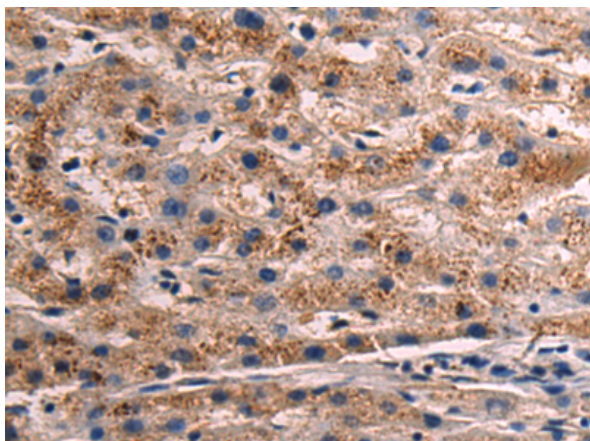
Purification: Antigen affinity purification

Species Reactivity: Human, Mouse, Rat

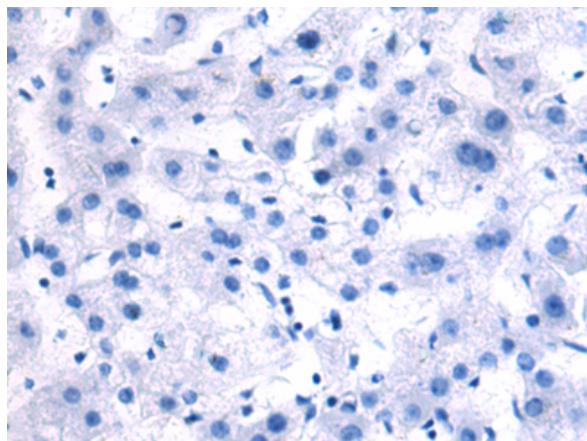
Constituents: PBS (without Mg²⁺ and Ca²⁺), pH 7.4, 150 mM NaCl, 0.05% Sodium Azide and 40% glycerol

Research Areas: Metabolism, Cancer, Cardiovascular

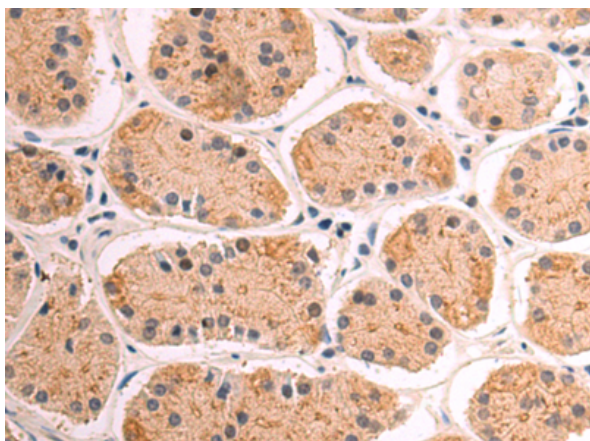
Storage & Shipping: Store at -20°C. Avoid repeated freezing and thawing



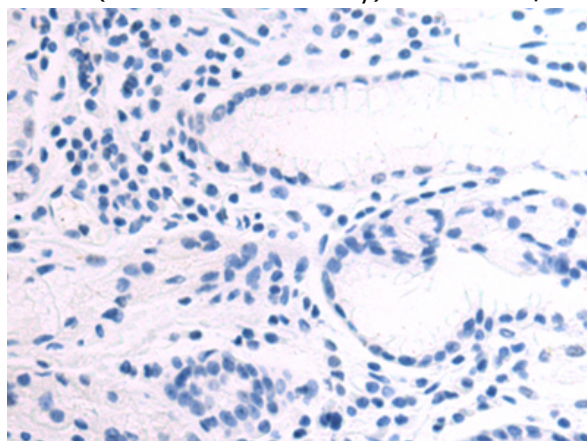
Immunohistochemistry analysis of paraffin embedded Human liver cancer tissue using 216898(ABCB6 Antibody) at a dilution of 1/60(Cytoplasm).



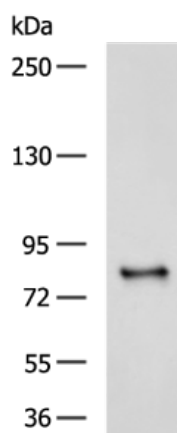
In comparison with the IHC on the left, the same paraffin-embedded Human liver cancer tissue is first treated with the fusion protein and then with 216898(Anti-ABCB6 Antibody) at dilution 1/60.



The image on the left is immunohistochemistry of paraffin-embedded Human esophagus cancer tissue using 216898(Anti-ABCB6 Antibody) at a dilution of 1/60.



In comparison with the IHC on the left, the same paraffin-embedded Human esophagus cancer tissue is first treated with fusion protein and then with D221438(Anti-ABCB6 Antibody) at dilution 1/60.



Gel: 6%SDS-PAGE, Lysate: 40 µg;
 Lane: HeLa cell lysate;
 Primary antibody: 216898(ABCB6 Antibody) at dilution 1/400;
 Secondary antibody: HRP-conjugated Goat anti rabbit IgG at 1/5000 dilution;
 Exposure time: 90 seconds



Product Description

Pioneering GTPase and Oncogene Product Development since 2010
