

## ABCB5 (8D2) MOUSE MAB

**Cat.#:** N261227

**Product Name:** Anti-ABCB5 (8D2) Mouse Monoclonal Antibody

**Synonyms:** ABCB5 P-gp; ATP binding cassette sub family B (MDR/TAP) member 5; P glycoprotein ABCB5

**UNIPROT ID:** Q2M3G0

**Background:** Drug efflux transporter present in a number of stem cells that acts as a regulator of cellular differentiation. Able to mediate efflux from cells of the rhodamine dye and of the therapeutic drug doxorubicin. Specifically present in limbal stem cells, where it plays a key role in corneal development and repair.

**Immunogen:** Synthetic Peptide of ABCB5

**Applications:** WB, ICC/IF

**Recommended Dilutions:** WB: 1/500-1/1000 IF: 1/50-1/200

**Host Species:** Mouse

**Clonality:** Mouse Monoclonal

**Clone ID:** 8D2-2B8-4E8

**MW:** Calculated MW: 139 kDa; Observed MW: 90 kDa

**Isotype:** IgG1

**Purification:** Affinity Purified

**Species Reactivity:** Human

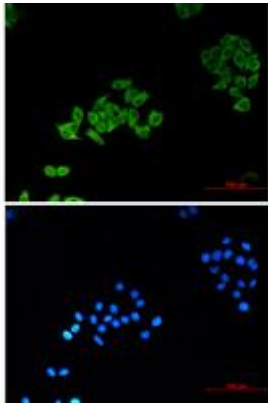
**Conjugation:** Unconjugated

**Modification:** Unmodified

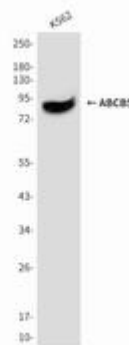
**Constituents:** PBS (without Mg<sup>2+</sup> and Ca<sup>2+</sup>), pH 7.3 containing 50% glycerol, 0.5% BSA and 0.02% sodium azide

**Research Areas:** Signal Transduction

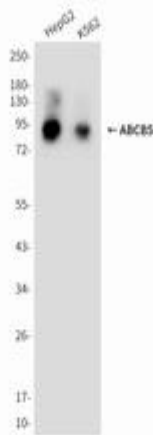
**Storage & Shipping:** Store at -20°C. Avoid repeated freezing and thawing



Immunocytochemistry analysis of ABCB5 (8D2) (green) in Hela using ABCB5 (8D2) antibody, and DAPI (blue)



Western blot analysis of ABCB5 in K562 lysates using ABCB5 antibody.



Western blot analysis of ABCB5 (8D2) in HepG2, K562 lysates using ABCB5 (8D2) antibody.