

AATK RABBIT PAB

Cat.#: S220746

Product Name: Anti-AATK Rabbit Polyclonal Antibody

Synonyms: LMR1; AATYK; LMTK1; p35BP; AATYK1

UNIPROT ID: Q6ZMQ8 (Gene Accession - NP_001073864)

Background: The protein encoded by this gene contains a tyrosine kinase domain at the N-terminus and a proline-rich domain at the C-terminus. This gene is induced during apoptosis, and expression of this gene may be a necessary pre-requisite for the induction of growth arrest and/or apoptosis of myeloid precursor cells. This gene has been shown to produce neuronal differentiation in a neuroblastoma cell line. Two transcript variants encoding different isoforms have been found for this gene.

Immunogen: Synthetic peptide of human AATK

Applications: ELISA, IHC

Recommended Dilutions: IHC: 50-200; ELISA: 2000-5000

Host Species: Rabbit

Clonality: Rabbit Polyclonal

Isotype: Immunogen-specific rabbit IgG

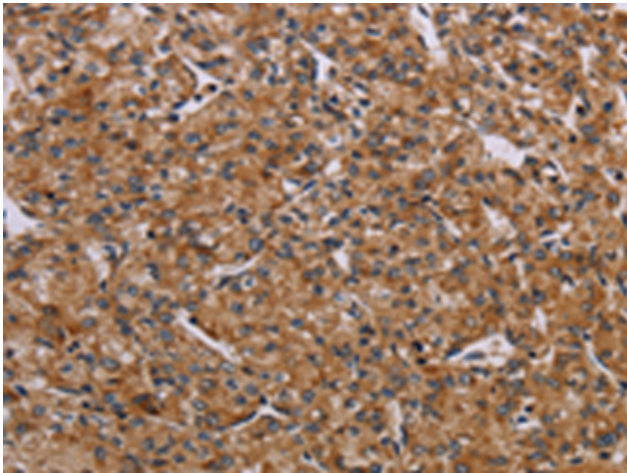
Purification: Antigen affinity purification

Species Reactivity: Human, Mouse

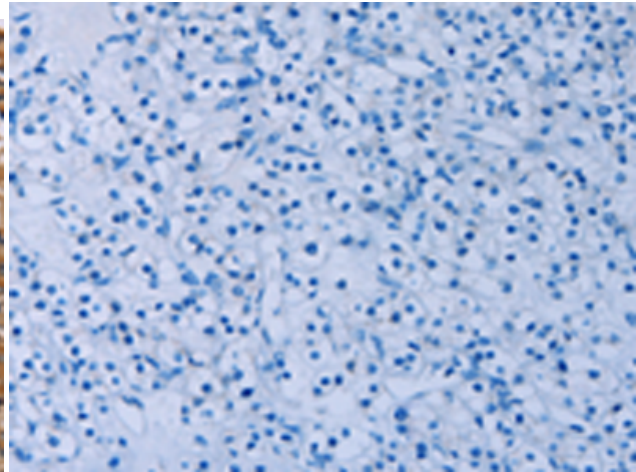
Constituents: PBS (without Mg²⁺ and Ca²⁺), pH 7.4, 150 mM NaCl, 0.05% Sodium Azide and 40% glycerol

Research Areas: Signal Transduction, Cancer, Neuroscience

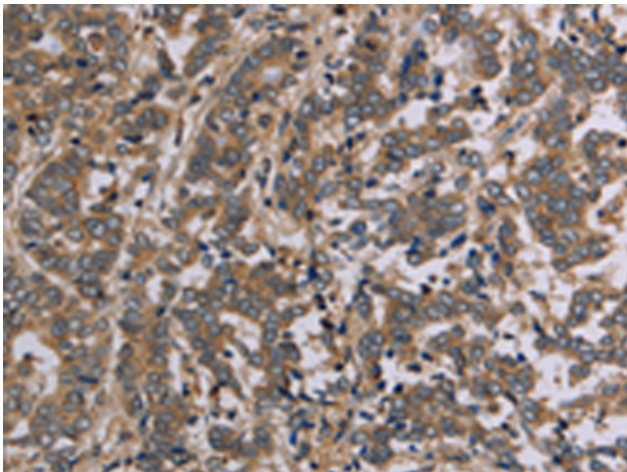
Storage & Shipping: Store at -20°C. Avoid repeated freezing and thawing



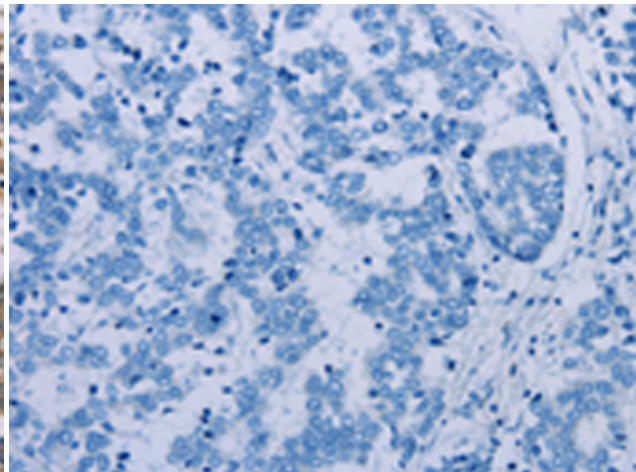
Immunohistochemistry analysis of paraffin embedded Human prostate cancer tissue using 220746(AATK Antibody) at a dilution of 1/45(Cytoplasm).



In comparison with the IHC on the left, the same paraffin-embedded Human prostate cancer tissue is first treated with the synthetic peptide and then with 220746(Anti-AATK Antibody) at dilution 1/45.



The image on the left is immunohistochemistry of paraffin-embedded Human liver cancer tissue using 220746(Anti-AATK Antibody) at a dilution of 1/45.



In comparison with the IHC on the left, the same paraffin-embedded Human liver cancer tissue is first treated with synthetic peptide and then with D261952(Anti-AATK Antibody) at dilution 1/45.