

67KDA LAMININ RECEPTOR RABBIT MAB

Cat.#: N261780

Product Name: Anti-67kDa Laminin Receptor Rabbit Monoclonal Antibody

Synonyms: SA; LBP; LRP; p40; 67LR; ICAS; lamR; 37LRP; LAMBR; LAMRI; LRP/LR; LBP/p40; NEM/1CHD4

UNIPROT ID: P08865

Background: Required for the assembly and/or stability of the 40S ribosomal subunit. Required for the processing of the 20S rRNA-precursor to mature 18S rRNA in a late step of the maturation of 40S ribosomal subunits. Also functions as a cell surface receptor for laminin. Plays a role in cell adhesion to the basement membrane and in the consequent activation of signaling transduction pathways.

Immunogen: A synthetic peptide of human 67kDa Laminin Receptor

Applications: WB,IP

Recommended Dilutions: WB: 1/500-1/1000 IP: 1/20

Host Species: Rabbit

Clonality: Rabbit Monoclonal

Clone ID: R01-1D4

MW: Calculated MW: 33 kDa; Observed MW: 40 kDa

Isotype: IgG

Purification: Affinity Purified

Species Reactivity: Human,Mouse,Rat

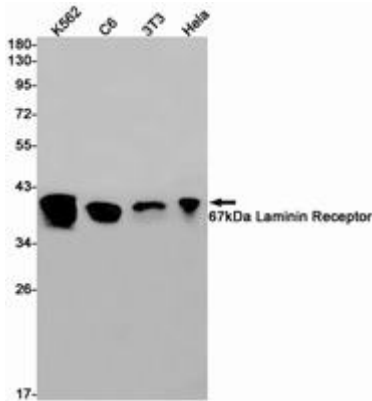
Conjugation: Unconjugated

Modification: Unmodified

Constituents: PBS (without Mg²⁺ and Ca²⁺), pH 7.3 containing 50% glycerol, 0.5% BSA and 0.02% sodium azide

Research Areas: Cardiovascular

Storage & Shipping: Store at -20°C. Avoid repeated freezing and thawing



Western blot analysis of 67kDa Laminin Receptor in K562, C6, 3T3, HeLa lysates using 67kDa Laminin Receptor antibody.